

Product datasheet for **TA351747S**

SPATA18 Rabbit Polyclonal Antibody

Product data:

Product Type:	Primary Antibodies
Applications:	IHC, WB
Recommended Dilution:	WB: 200-1000 WB positive control: Human normal stomach tissue IHC: 25-100 Positive control: Human liver cancer Predicted cell location: Cytoplasm
Reactivity:	Human
Host:	Rabbit
Isotype:	IgG
Clonality:	Polyclonal
Immunogen:	Synthetic peptide of human SPATA18
Formulation:	pH7.4 PBS, 0.05% NaN ₃ , 40% Glycerol
Purification:	Antigen affinity purification
Conjugation:	Unconjugated
Storage:	Store at -20°C as received.
Stability:	Stable for 12 months from date of receipt.
Predicted Protein Size:	61 kDa
Gene Name:	spermatogenesis associated 18
Database Link:	NP_660306 Entrez Gene 132671 Human Q8TC71
Background:	SPATA18 (spermatogenesis associated 18), also known as Mieap or SPETEX1, is a 538 amino acid protein that is thought to play a role in cell differentiation during spermatogenesis, particularly during development from late elongate spermatids to mature spermatozoa. Localizing to cytoplasm, SPATA18 is encoded by a gene that maps to human chromosome 4q12.
Synonyms:	Mieap; SPETEX1

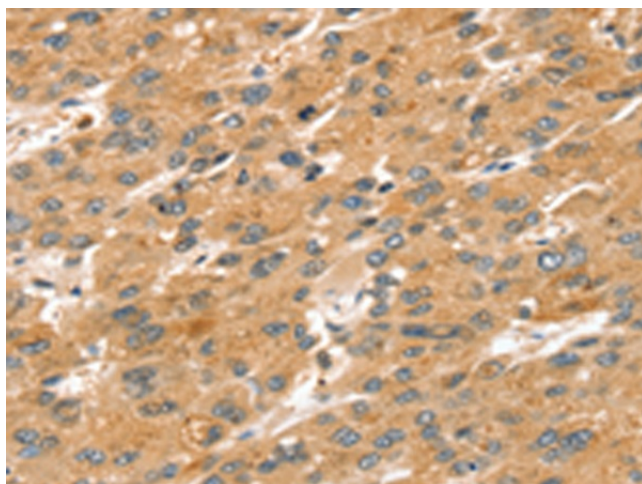


[View online »](#)

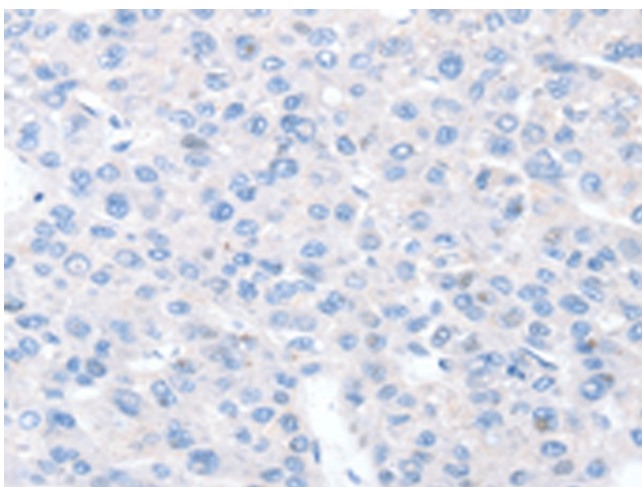
Product images:



Gel: 8%SDS-PAGE
Lysate: 40 μ g
Lane: Human normal stomach tissue
Primary antibody: [TA351747] (SPATA18 Antibody) at dilution 1/250
Secondary antibody: Goat anti rabbit IgG at 1/8000 dilution
Exposure time: 5 minutes



Immunohistochemistry of paraffin-embedded Human liver cancer tissue using [TA351747] (SPATA18 Antibody) at dilution 1/20 (Original magnification: \times 200)



Immunohistochemistry of paraffin-embedded Human liver cancer tissue using [TA351747] (SPATA18 Antibody) at dilution 1/20, treated with synthetic peptide. (Original magnification: $\times 200$)