

## Product datasheet for **TA351744**

### Sortilin (SORT1) Rabbit Polyclonal Antibody

#### Product data:

Product Type:	Primary Antibodies
Applications:	IHC, WB
Recommended Dilution:	WB: 500-2000 WB positive control: Mouse brain and human brain tissue, human prostate tissue, human fat and placenta tissue IHC: 35-150 Positive control: Human liver cancer Predicted cell location: Cytoplasm
Reactivity:	Human, Mouse, Rat
Host:	Rabbit
Isotype:	IgG
Clonality:	Polyclonal
Immunogen:	Synthetic peptide of human SORT1
Formulation:	pH7.4 PBS, 0.05% NaN <sub>3</sub> , 40% Glycerol
Concentration:	lot specific
Purification:	Antigen affinity purification
Conjugation:	Unconjugated
Storage:	Store at -20°C as received.
Stability:	Stable for 12 months from date of receipt.
Predicted Protein Size:	92 kDa
Gene Name:	sortilin 1
Database Link:	<a href="#">NP_002950</a> <a href="#">Entrez Gene 6272 Human Q99523</a>



[View online »](#)

**Background:**

This gene encodes a protein that is a multi-ligand type-1 receptor with similarity to the yeast carboxypeptidase Y sorting receptor Vps10 protein. The encoded protein, a trans-Golgi network (TGN) transmembrane protein, binds a number of unrelated ligands that participate in a wide range of cellular processes; however, it lacks the typical features of a signalling receptor. In the TGN, furin mediates the activation of the mature binding form. The encoded protein consists of a large luminal domain, a single transmembrane segment and short C-terminal cytoplasmic tail.

**Synonyms:**

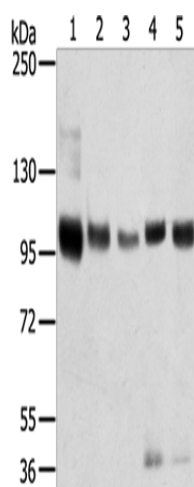
Gp95; LDLCQ6; NT3; NTR3

**Protein Families:**

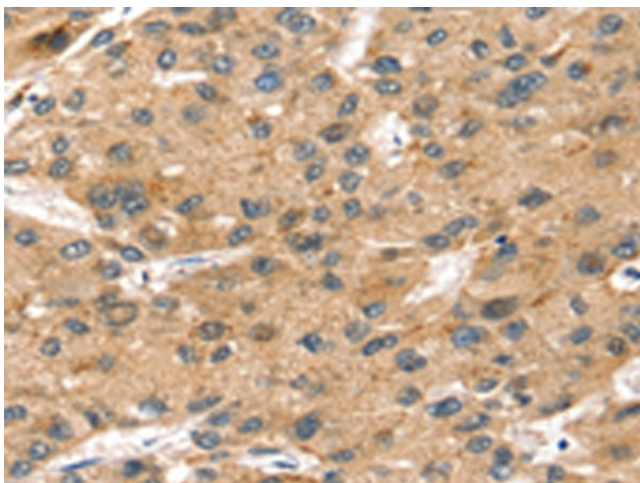
Druggable Genome, Transmembrane

**Protein Pathways:**

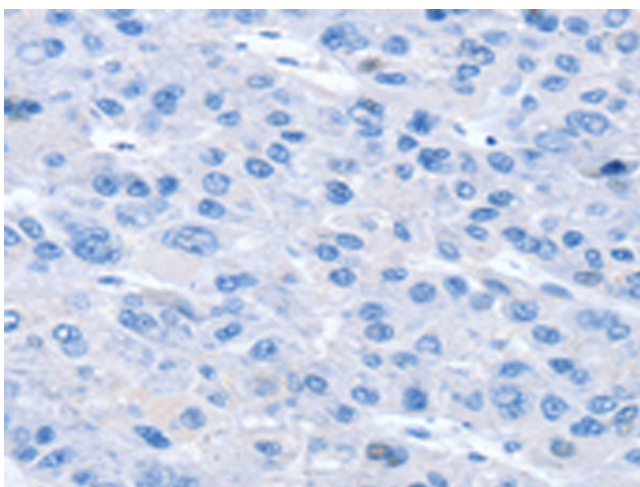
Lysosome, Neurotrophin signaling pathway

**Product images:**

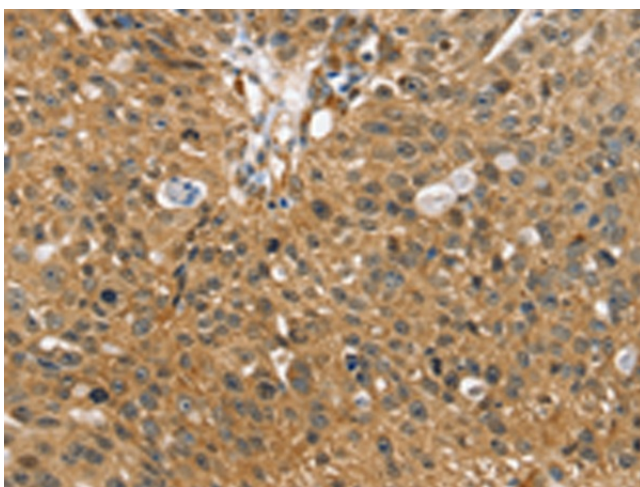
Gel: 6%SDS-PAGE  
Lysate: 40 µg  
Lane 1-5: Mouse brain tissue  
human brain tissue  
human prostate tissue  
human fat tissue  
Human placenta tissue  
Primary antibody: TA351744 (SORT1 Antibody) at dilution 1/200  
Secondary antibody: Goat anti rabbit IgG at 1/8000 dilution  
Exposure time: 40 seconds



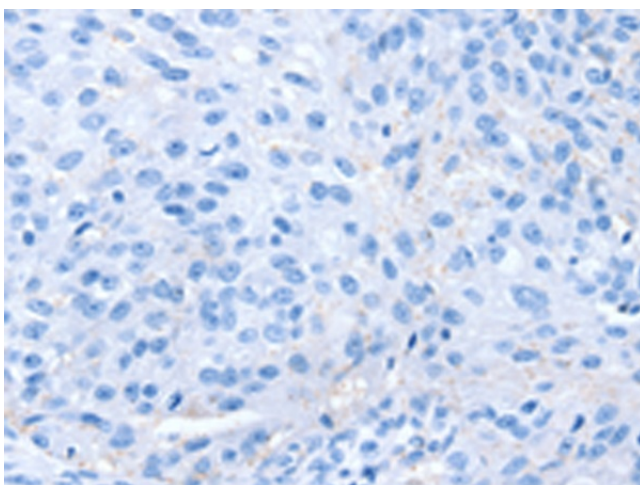
Immunohistochemistry of paraffin-embedded Human liver cancer tissue using TA351744 (SORT1 Antibody) at dilution 1/35 (Original magnification: ×200)



Immunohistochemistry of paraffin-embedded Human liver cancer tissue using TA351744 (SORT1 Antibody) at dilution 1/35, treated with synthetic peptide. (Original magnification: ×200)



Immunohistochemistry of paraffin-embedded Human breast cancer tissue using TA351744 (SORT1 Antibody) at dilution 1/35 (Original magnification: ×200)



Immunohistochemistry of paraffin-embedded Human breast cancer tissue using TA351744 (SORT1 Antibody) at dilution 1/35, treated with synthetic peptide. (Original magnification: ×200)