

Product datasheet for **TA351737S**

SNX25 Rabbit Polyclonal Antibody

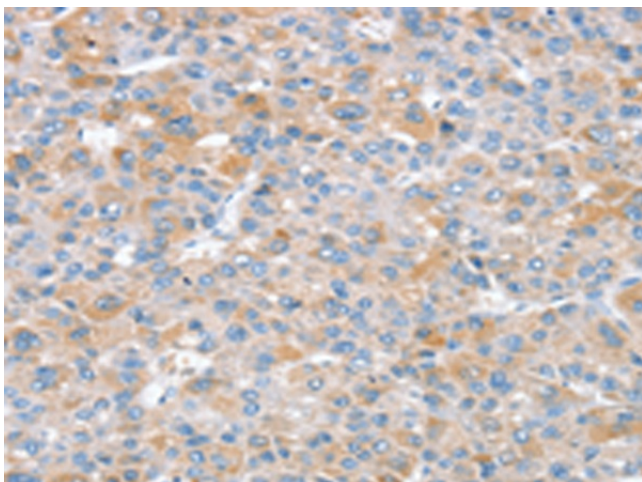
Product data:

Product Type:	Primary Antibodies
Applications:	IHC
Recommended Dilution:	IHC: 25-100 Positive control: Human liver cancer Predicted cell location: Cytoplasm
Reactivity:	Human, Mouse
Host:	Rabbit
Isotype:	IgG
Clonality:	Polyclonal
Immunogen:	Synthetic peptide of human SNX25
Formulation:	pH7.4 PBS, 0.05% NaN ₃ , 40% Glycerol
Purification:	Antigen affinity purification
Conjugation:	Unconjugated
Storage:	Store at -20°C as received.
Stability:	Stable for 12 months from date of receipt.
Gene Name:	sorting nexin 25
Database Link:	NP_114159 Entrez Gene 83891 Human Q9H3E2
Background:	SNX25 (sorting nexin 25), also known as SBBI31 or MSTP043, is an 840 amino acid protein suggested to function in several stages of intracellular trafficking. A member of the sorting nexin family, SNX25 contains one PX (phox homology) domain, an RGS domain and one PXA domain. May be involved in several stages of intracellular trafficking.
Synonyms:	MSTP043; SBBI31

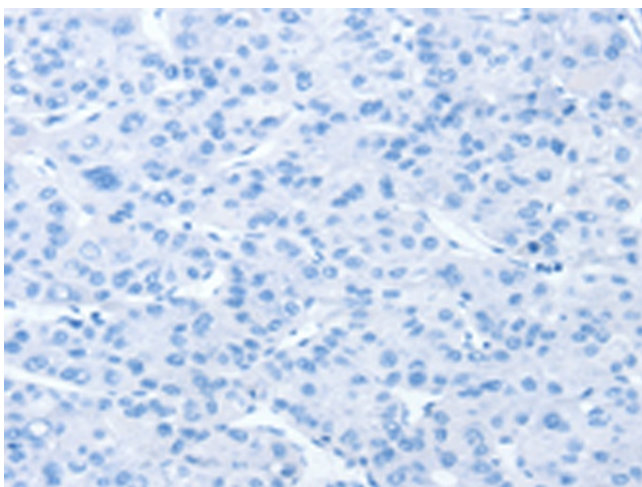


[View online »](#)

Product images:



Immunohistochemistry of paraffin-embedded Human liver cancer tissue using [TA351737] (SNX25 Antibody) at dilution 1/35 (Original magnification: ×200)



Immunohistochemistry of paraffin-embedded Human liver cancer tissue using [TA351737] (SNX25 Antibody) at dilution 1/35, treated with synthetic peptide. (Original magnification: ×200)