

## Product datasheet for **TA351737**

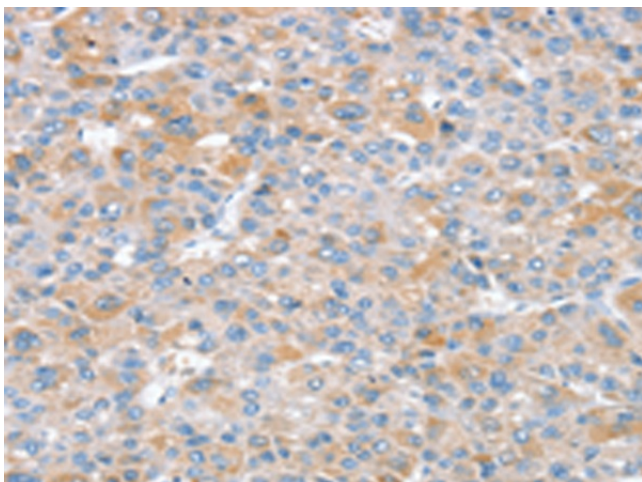
### SNX25 Rabbit Polyclonal Antibody

#### Product data:

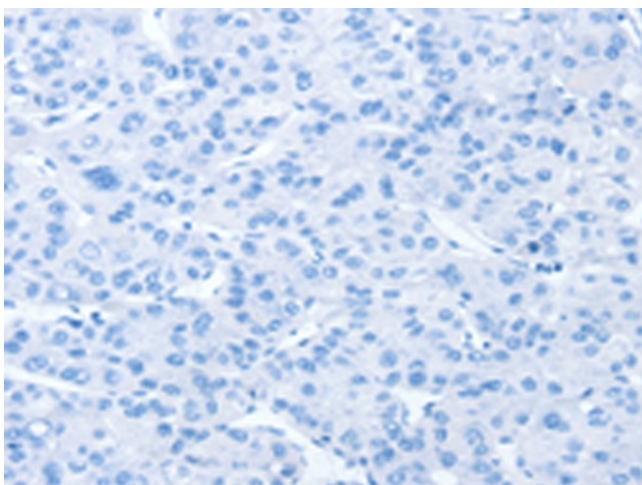
Product Type:	Primary Antibodies
Applications:	IHC
Recommended Dilution:	IHC: 25-100 Positive control: Human liver cancer Predicted cell location: Cytoplasm
Reactivity:	Human, Mouse
Host:	Rabbit
Isotype:	IgG
Clonality:	Polyclonal
Immunogen:	Synthetic peptide of human SNX25
Formulation:	pH7.4 PBS, 0.05% NaN3, 40% Glycerol
Concentration:	lot specific
Purification:	Antigen affinity purification
Conjugation:	Unconjugated
Storage:	Store at -20°C as received.
Stability:	Stable for 12 months from date of receipt.
Gene Name:	sorting nexin 25
Database Link:	<a href="#">NP_114159</a> <a href="#">Entrez Gene 83891 Human</a> <a href="#">Q9H3E2</a>
Background:	SNX25 (sorting nexin 25), also known as SBBI31 or MSTP043, is an 840 amino acid protein suggested to function in several stages of intracellular trafficking. A member of the sorting nexin family, SNX25 contains one PX (phox homology) domain, an RGS domain and one PXA domain. May be involved in several stages of intracellular trafficking.
Synonyms:	MSTP043; SBBI31



[View online »](#)

**Product images:**

Immunohistochemistry of paraffin-embedded Human liver cancer tissue using TA351737 (SNX25 Antibody) at dilution 1/35 (Original magnification:  $\times 200$ )



Immunohistochemistry of paraffin-embedded Human liver cancer tissue using TA351737 (SNX25 Antibody) at dilution 1/35, treated with synthetic peptide. (Original magnification:  $\times 200$ )