

Product datasheet for **TA351731**

SMYD5 Rabbit Polyclonal Antibody

Product data:

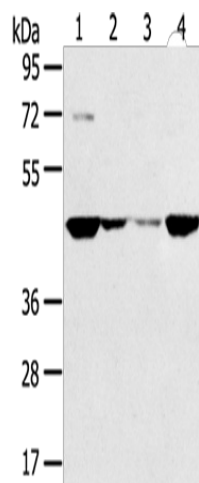
Product Type:	Primary Antibodies
Applications:	WB
Recommended Dilution:	WB: 500-2000 WB positive control: HT-29, 231, hela and A549 cells
Reactivity:	Human, Mouse
Host:	Rabbit
Isotype:	IgG
Clonality:	Polyclonal
Immunogen:	Synthetic peptide of human SMYD5
Formulation:	pH7.4 PBS, 0.05% NaN ₃ , 40% Glycerol
Concentration:	lot specific
Purification:	Antigen affinity purification
Conjugation:	Unconjugated
Storage:	Store at -20°C as received.
Stability:	Stable for 12 months from date of receipt.
Predicted Protein Size:	47 kDa
Gene Name:	SMYD family member 5
Database Link:	NP_006053 Entrez Gene 232187 Mouse Entrez Gene 10322 Human Q6GMV2
Background:	The SMYD (SET and MYND domain) family of lysine methyltransferases (KMTs) plays pivotal roles in various cellular processes, including gene expression regulation and DNA damage response. SMYD1, SMYD2, and SMYD3 share a high degree of sequence homology and, with the exception of SMYD5, human SMYD proteins harbor at least one C-terminal tetratricopeptide repeat (TPR) domain. The SMYD proteins have been found to be linked to various cancers and biological processes.
Synonyms:	NN8-4AG; RAI15; RRG1; ZMYND23



[View online »](#)

Protein Families: Druggable Genome

Product images:



Gel: 8%SDS-PAGE
Lysate: 40 μ g
Lane 1-4: HT29 cells
231 cells
hela cells
A549 cells
Primary antibody: TA351731 (SMYD5 Antibody) at
dilution 1/200
Secondary antibody: Goat anti rabbit IgG at
1/8000 dilution
Exposure time: 1 minute