

Product datasheet for **TA351726**

SMC2 Rabbit Polyclonal Antibody

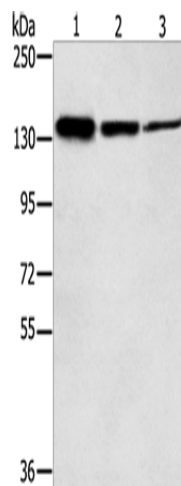
Product data:

Product Type:	Primary Antibodies
Applications:	WB
Recommended Dilution:	WB: 500-2000 WB positive control: Jurkat, A172 and A549 cells
Reactivity:	Human
Host:	Rabbit
Isotype:	IgG
Clonality:	Polyclonal
Immunogen:	Synthetic peptide of human SMC2
Formulation:	pH7.4 PBS, 0.05% NaN ₃ , 40% Glycerol
Concentration:	lot specific
Purification:	Antigen affinity purification
Conjugation:	Unconjugated
Storage:	Store at -20°C as received.
Stability:	Stable for 12 months from date of receipt.
Predicted Protein Size:	136 kDa
Gene Name:	structural maintenance of chromosomes 2
Database Link:	NP_006435 Entrez Gene 10592 Human O95347
Background:	Members of the structural maintenance of chromosomes, or SMC, family (e.g., SMC1A; MIM 300040) are critical for mitotic chromosome condensation in frogs and for DNA repair in mammals.
Synonyms:	CAP-E; CAPE; SMC-2; SMC2L1
Protein Families:	Druggable Genome



[View online »](#)

Product images:



Gel: 6%SDS-PAGE
Lysate: 40 μ g
Lane 1-3: Jurkat cells
A172 cells
A549 cells
Primary antibody: TA351726 (SMC2 Antibody) at dilution 1/300
Secondary antibody: Goat anti rabbit IgG at 1/8000 dilution
Exposure time: 20 seconds