

## Product datasheet for **TA351722S**

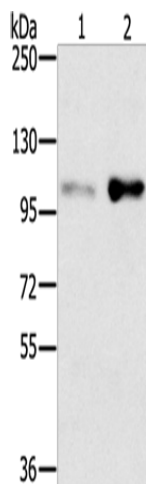
### SLTM Rabbit Polyclonal Antibody

#### Product data:

Product Type:	Primary Antibodies
Applications:	WB
Recommended Dilution:	WB: 500-2000 WB positive control: HT-29 and 293T cells
Reactivity:	Human, Mouse
Host:	Rabbit
Isotype:	IgG
Clonality:	Polyclonal
Immunogen:	Synthetic peptide of human SLTM
Formulation:	pH7.4 PBS, 0.05% NaN <sub>3</sub> , 40% Glycerol
Purification:	Antigen affinity purification
Conjugation:	Unconjugated
Storage:	Store at -20°C as received.
Stability:	Stable for 12 months from date of receipt.
Predicted Protein Size:	117 kDa
Gene Name:	SAFB like transcription modulator
Database Link:	<a href="#">NP_079031</a> <a href="#">Entrez Gene 79811 Human</a> <a href="#">Q9NWH9</a>
Background:	SLTM (SAFB-like, transcription modulator), also known as MET (modulator of estrogen-induced transcription), is a 1,034 amino acid protein that localizes to punctate structures within the nucleus and contains one SAP domain and one RNA recognition motif. When expressed at high levels, SLTM functions to inhibit transcription and may, ultimately, lead to apoptosis. Multiple isoforms of SLTM exist due to alternative splicing events. The gene encoding SLTM maps to human chromosome 15, which houses over 700 genes and comprises nearly 3% of the human genome.
Synonyms:	Met



[View online »](#)

**Product images:**


Gel: 6%SDS-PAGE

Lysate: 40 µg

Lane 1-2: HT29 cells  
293T cells

Primary antibody: [TA351722] (SLTM Antibody) at  
dilution 1/400

Secondary antibody: Goat anti rabbit IgG at  
1/8000 dilution

Exposure time: 2 minutes