

## Product datasheet for **TA351720**

### SLIT2 Rabbit Polyclonal Antibody

#### Product data:

Product Type:	Primary Antibodies
Applications:	IHC, WB
Recommended Dilution:	WB: 200-1000 WB positive control: Mouse bladder tissue IHC: 25-100 Positive control: Human liver cancer Predicted cell location: Cytoplasm
Reactivity:	Human, Mouse, Rat
Host:	Rabbit
Isotype:	IgG
Clonality:	Polyclonal
Immunogen:	Synthetic peptide of human SLIT2
Formulation:	pH7.4 PBS, 0.05% NaN <sub>3</sub> , 40% Glycerol
Concentration:	lot specific
Purification:	Antigen affinity purification
Conjugation:	Unconjugated
Storage:	Store at -20°C as received.
Stability:	Stable for 12 months from date of receipt.
Predicted Protein Size:	170 kDa
Gene Name:	slit guidance ligand 2
Database Link:	<a href="#">NP_004778</a> <a href="#">Entrez Gene 20563 Mouse</a> <a href="#">Entrez Gene 360272 Rat</a> <a href="#">Entrez Gene 9353 Human</a> <a href="#">O94813</a>

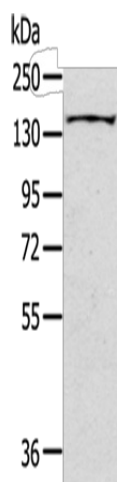


[View online »](#)

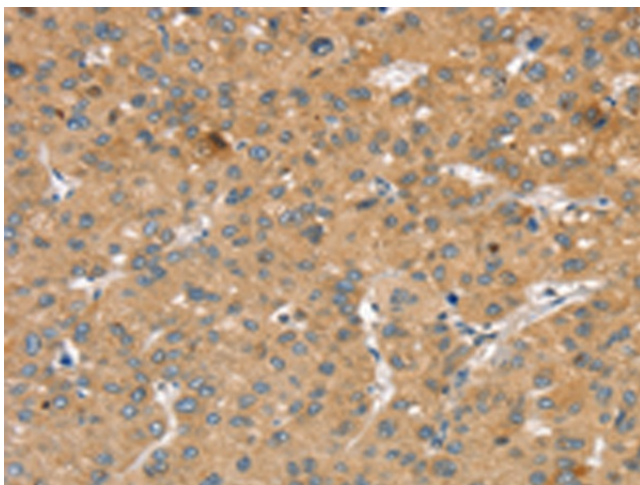
**Background:** Secreted leucine-rich repeat-containing proteins 1-3 (Slit1-3) are secreted glycoproteins that influence axonal guidance and mediate normal neural development by acting as high-affinity signaling ligands for the repulsive guidance receptor, Roundabout (Robo). Within the developing central nervous system (CNS) of different vertebrate systems, Slit proteins are expressed in equivalent regions, suggesting a conserved function among vertebrate homologs. Slit is expressed in the midline of the central nervous system in both vertebrates and invertebrates, where it functions as a regulatory factor of mesodermal cell movement during gastrulation. Slit2 is a short range inhibitory guidance cue for retinal ganglion cell (RGC) axons that may mediate spatial progression of RGCs.

**Synonyms:** SLIL3; Slit-2  
**Protein Families:** Druggable Genome, Secreted Protein  
**Protein Pathways:** Axon guidance

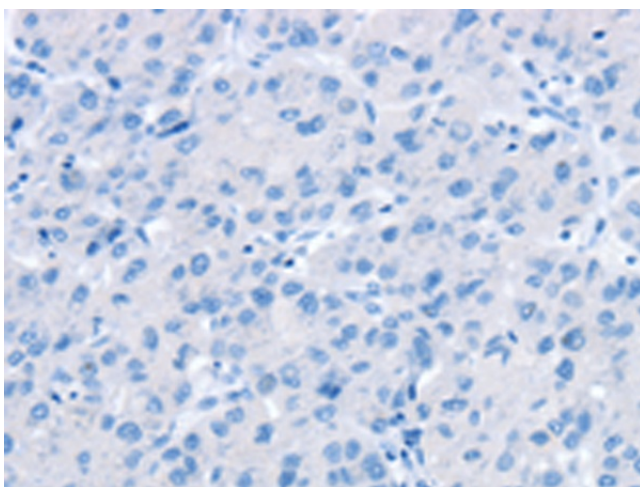
**Product images:**



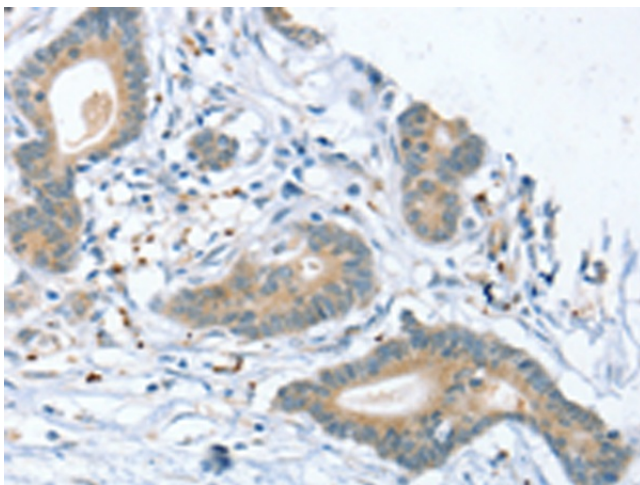
Gel: 6%SDS-PAGE  
Lysate: 40 µg  
Lane: Mouse bladder tissue  
Primary antibody: TA351720 (SLIT2 Antibody) at dilution 1/200  
Secondary antibody: Goat anti rabbit IgG at 1/8000 dilution  
Exposure time: 1 minute



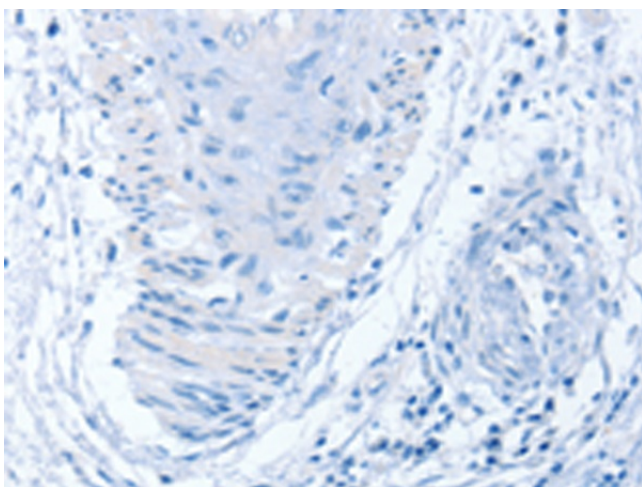
Immunohistochemistry of paraffin-embedded Human liver cancer tissue using TA351720 (SLIT2 Antibody) at dilution 1/30 (Original magnification:  $\times 200$ )



Immunohistochemistry of paraffin-embedded Human liver cancer tissue using TA351720 (SLIT2 Antibody) at dilution 1/30, treated with synthetic peptide. (Original magnification:  $\times 200$ )



Immunohistochemistry of paraffin-embedded Human colon cancer tissue using TA351720 (SLIT2 Antibody) at dilution 1/30 (Original magnification:  $\times 200$ )



Immunohistochemistry of paraffin-embedded Human colon cancer tissue using TA351720 (SLIT2 Antibody) at dilution 1/30, treated with synthetic peptide. (Original magnification: ×200)