

## Product datasheet for **TA351719S**

### SLIT1 Rabbit Polyclonal Antibody

#### Product data:

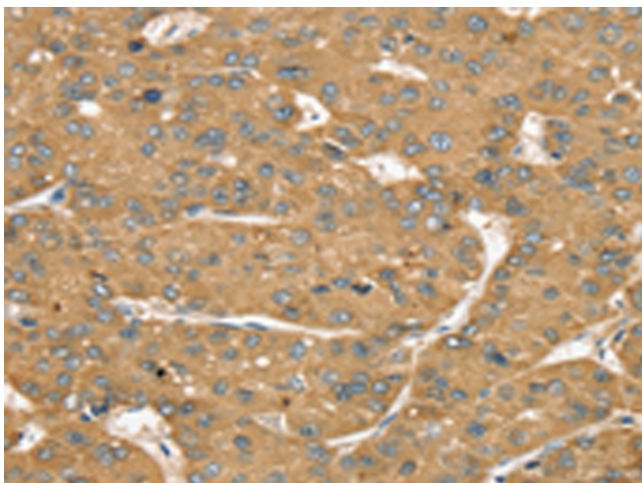
Product Type:	Primary Antibodies
Applications:	IHC
Recommended Dilution:	IHC: 25-100 Positive control: Human liver cancer Predicted cell location: Cytoplasm
Reactivity:	Human, Mouse, Rat
Host:	Rabbit
Isotype:	IgG
Clonality:	Polyclonal
Immunogen:	Synthetic peptide of human SLIT1
Formulation:	pH7.4 PBS, 0.05% NaN <sub>3</sub> , 40% Glycerol
Purification:	Antigen affinity purification
Conjugation:	Unconjugated
Storage:	Store at -20°C as received.
Stability:	Stable for 12 months from date of receipt.
Gene Name:	slit guidance ligand 1
Database Link:	<a href="#">NP_003052</a> <a href="#">Entrez Gene 20562 Mouse</a> <a href="#">Entrez Gene 65047 Rat</a> <a href="#">Entrez Gene 6585 Human</a> <a href="#">O75093</a>
Background:	Slit homolog 1 protein is a protein that in humans is encoded by the SLIT1 gene. Thought to act as molecular guidance cue in cellular migration, and function appears to be mediated by interaction with roundabout homolog receptors. During neural development involved in axonal navigation at the ventral midline of the neural tube and projection of axons to different regions. By similarity, SLIT1 and SLIT2 together seem to be essential for midline guidance in the forebrain by acting as repulsive signal preventing inappropriate midline crossing by axons projecting from the olfactory bulb.
Synonyms:	MEGF4; SLIL1; SLIT-1; SLIT3
Protein Families:	Druggable Genome



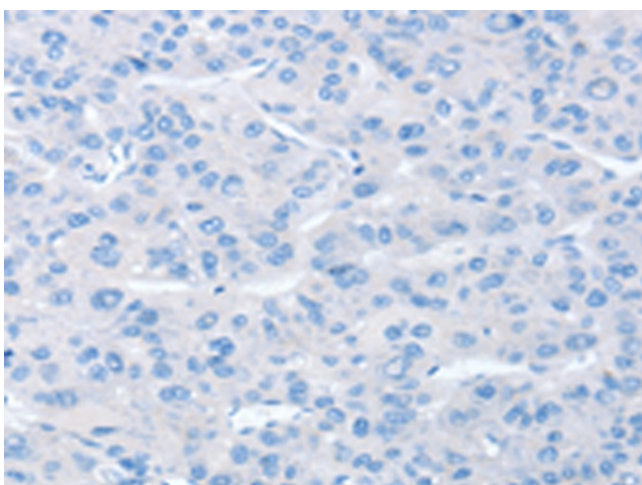
[View online »](#)

Protein Pathways: Axon guidance

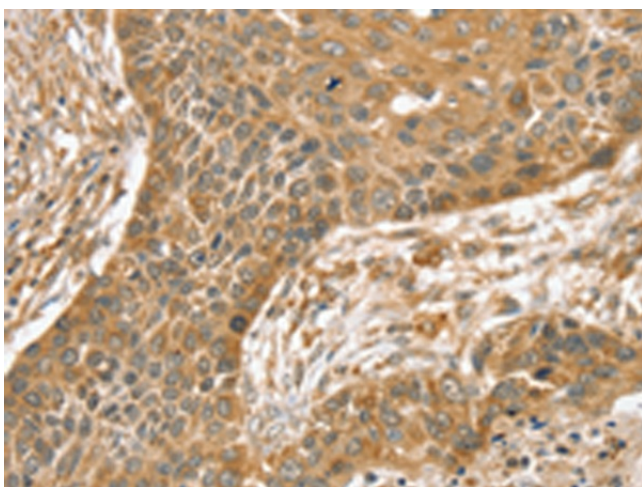
### Product images:



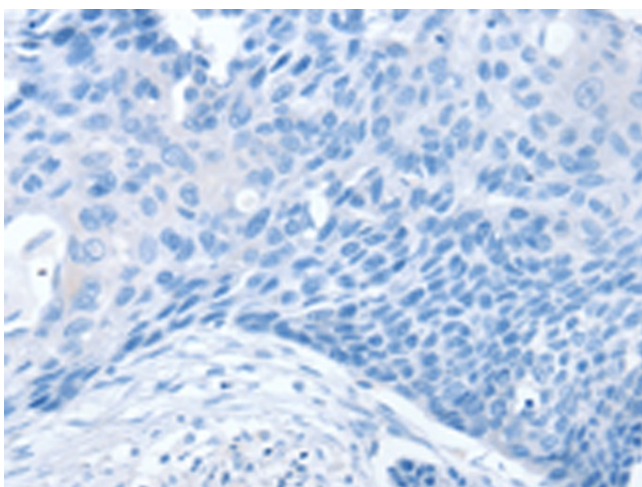
Immunohistochemistry of paraffin-embedded Human liver cancer tissue using [TA351719] (SLIT1 Antibody) at dilution 1/35 (Original magnification:  $\times 200$ )



Immunohistochemistry of paraffin-embedded Human liver cancer tissue using [TA351719] (SLIT1 Antibody) at dilution 1/35, treated with synthetic peptide. (Original magnification:  $\times 200$ )



Immunohistochemistry of paraffin-embedded Human esophagus cancer tissue using [TA351719] (SLIT1 Antibody) at dilution 1/35 (Original magnification:  $\times 200$ )



Immunohistochemistry of paraffin-embedded Human esophagus cancer tissue using [TA351719] (SLIT1 Antibody) at dilution 1/35, treated with synthetic peptide. (Original magnification:  $\times 200$ )