

Product datasheet for **TA351719**

SLIT1 Rabbit Polyclonal Antibody

Product data:

Product Type:	Primary Antibodies
Applications:	IHC
Recommended Dilution:	IHC: 25-100 Positive control: Human liver cancer Predicted cell location: Cytoplasm
Reactivity:	Human, Mouse, Rat
Host:	Rabbit
Isotype:	IgG
Clonality:	Polyclonal
Immunogen:	Synthetic peptide of human SLIT1
Formulation:	pH7.4 PBS, 0.05% NaN ₃ , 40% Glycerol
Concentration:	lot specific
Purification:	Antigen affinity purification
Conjugation:	Unconjugated
Storage:	Store at -20°C as received.
Stability:	Stable for 12 months from date of receipt.
Gene Name:	slit guidance ligand 1
Database Link:	NP_003052 Entrez Gene 20562 Mouse Entrez Gene 65047 Rat Entrez Gene 6585 Human O75093
Background:	Slit homolog 1 protein is a protein that in humans is encoded by the SLIT1 gene. Thought to act as molecular guidance cue in cellular migration, and function appears to be mediated by interaction with roundabout homolog receptors. During neural development involved in axonal navigation at the ventral midline of the neural tube and projection of axons to different regions. By similarity, SLIT1 and SLIT2 together seem to be essential for midline guidance in the forebrain by acting as repulsive signal preventing inappropriate midline crossing by axons projecting from the olfactory bulb.
Synonyms:	MEGF4; SLIL1; SLIT-1; SLIT3

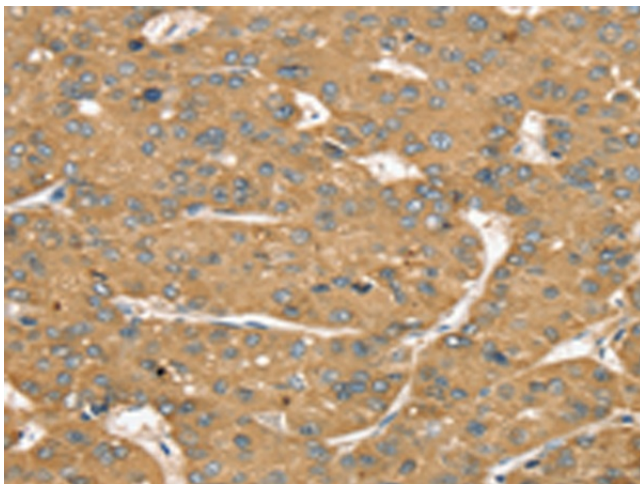


[View online »](#)

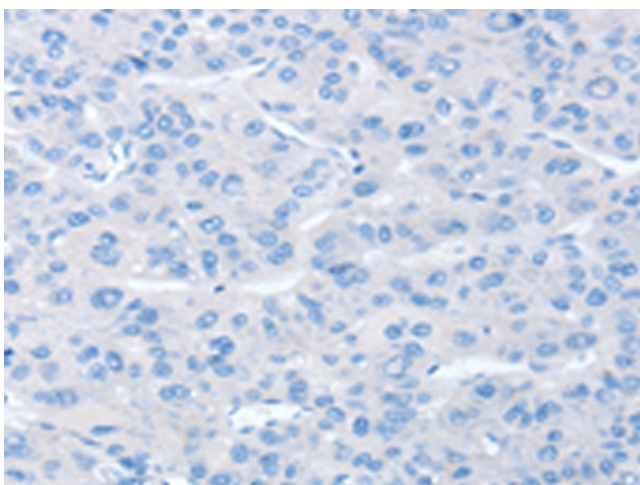
Protein Families: Druggable Genome

Protein Pathways: Axon guidance

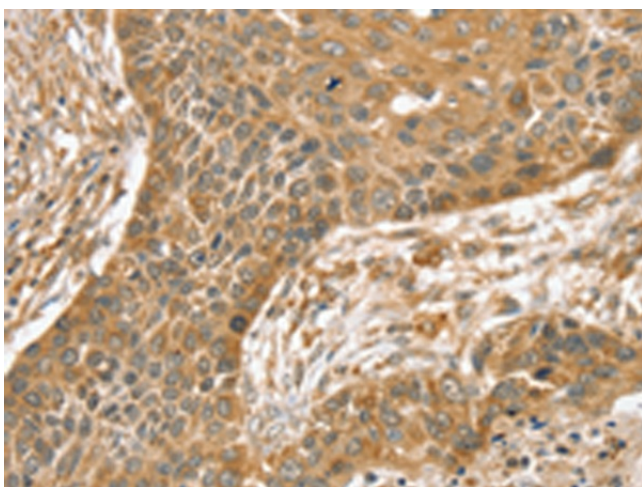
Product images:



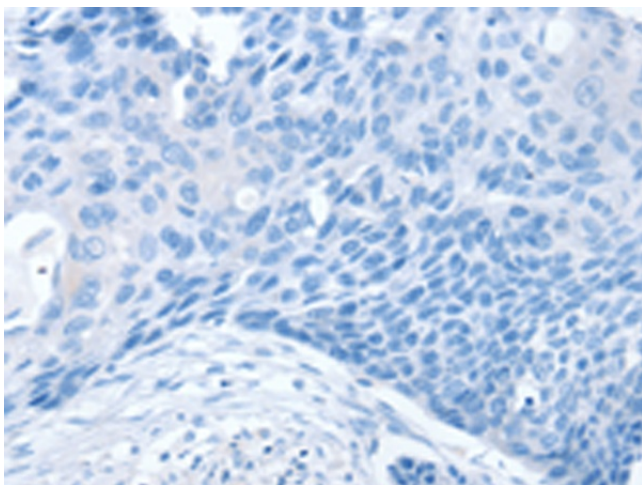
Immunohistochemistry of paraffin-embedded Human liver cancer tissue using TA351719 (SLIT1 Antibody) at dilution 1/35 (Original magnification: ×200)



Immunohistochemistry of paraffin-embedded Human liver cancer tissue using TA351719 (SLIT1 Antibody) at dilution 1/35, treated with synthetic peptide. (Original magnification: ×200)



Immunohistochemistry of paraffin-embedded Human esophagus cancer tissue using TA351719 (SLIT1 Antibody) at dilution 1/35 (Original magnification: $\times 200$)



Immunohistochemistry of paraffin-embedded Human esophagus cancer tissue using TA351719 (SLIT1 Antibody) at dilution 1/35, treated with synthetic peptide. (Original magnification: $\times 200$)