

Product datasheet for **TA351718**

SLC17A1 Rabbit Polyclonal Antibody

Product data:

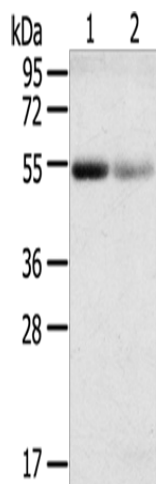
Product Type:	Primary Antibodies
Applications:	WB
Recommended Dilution:	WB: 200-1000 WB positive control: Human kidney cancer and kidney pericarcinous tissue
Reactivity:	Human
Host:	Rabbit
Isotype:	IgG
Clonality:	Polyclonal
Immunogen:	Synthetic peptide of human SLC17A1
Formulation:	pH7.4 PBS, 0.05% NaN ₃ , 40% Glycerol
Concentration:	lot specific
Purification:	Antigen affinity purification
Conjugation:	Unconjugated
Storage:	Store at -20°C as received.
Stability:	Stable for 12 months from date of receipt.
Predicted Protein Size:	51 kDa
Gene Name:	solute carrier family 17 member 1
Database Link:	NP_005065 Entrez Gene 6568 Human Q14916
Background:	NPT1, also called sodium-dependent phosphate transport protein, belongs to the organic anion transporter family, SLC17A. It is mainly expressed in the kidney transporting small organic anions such as PAH (para-aminohippurate), but it is also found in the liver and brain. NPT1 localizes to the apical membrane of renal proximal tubular cells and functions as a voltage driven organic anion/Cl-exchanger. It also plays a role in maintaining phosphate homeostasis. The expression of NPT1 is transcriptionally regulated by HNF-1 α and HNF-3 β . Indomethacin and salicylate inhibit NPT1-mediated PAH transport.
Synonyms:	NAPI-1; NPT-1; NPT1



[View online »](#)

Protein Families: Transmembrane

Product images:



Gel: 8%SDS-PAGE

Lysate: 60 μ g

Lane 1-2: Human kidney cancer tissue

Human kidney pericarcinoma tissue

Primary antibody: TA351718 (SLC17A1 Antibody)
at dilution 1/200

Secondary antibody: Goat anti rabbit IgG at
1/8000 dilution

Exposure time: 30 seconds