

## Product datasheet for **TA351716S**

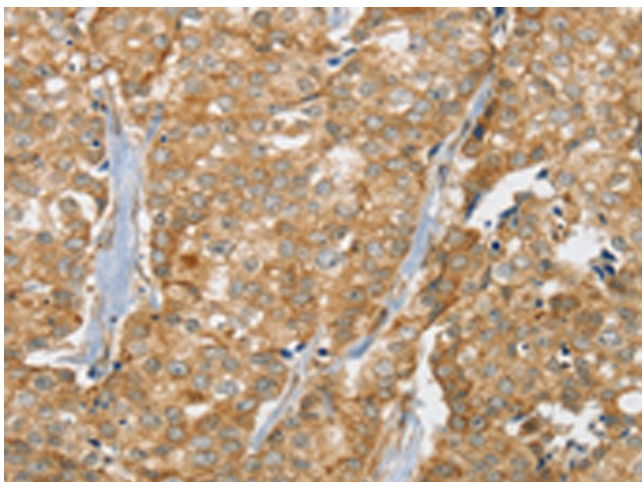
### SLC9A3R2 Rabbit Polyclonal Antibody

#### Product data:

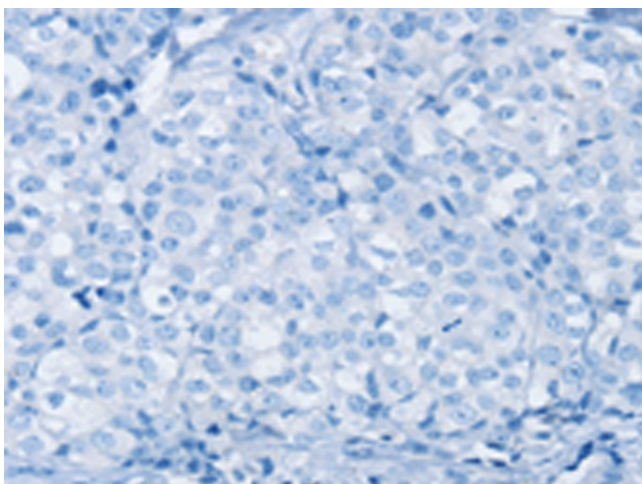
|                       |   |
|-----------------------|---|
| Product Type:         | Primary Antibodies  |
| Applications:         | IHC   |
| Recommended Dilution: | IHC: 25-100<br>Positive control: Human breast cancer<br>Predicted cell location: Cytoplasm and Cell membrane  |
| Reactivity:           | Human, Rat  |
| Host:                 | Rabbit  |
| Isotype:              | IgG   |
| Clonality:            | Polyclonal  |
| Immunogen:            | Synthetic peptide of human SLC9A3R2   |
| Formulation:          | pH7.4 PBS, 0.05% NaN <sub>3</sub> , 40% Glycerol  |
| Purification:         | Antigen affinity purification   |
| Conjugation:          | Unconjugated  |
| Storage:              | Store at -20°C as received.   |
| Stability:            | Stable for 12 months from date of receipt.  |
| Gene Name:            | SLC9A3 regulator 2  |
| Database Link:        | <a href="#">NP_004776</a><br><a href="#">Entrez Gene 116501 Rat</a> <a href="#">Entrez Gene 9351 Human</a><br><a href="#">Q15599</a>  |
| Background:           | This gene encodes a member of the NHERF family of PDZ scaffolding proteins. These proteins mediate many cellular processes by binding to and regulating the membrane expression and protein-protein interactions of membrane receptors and transport proteins. The encoded protein plays a role in intestinal sodium absorption by regulating the activity of the sodium/hydrogen exchanger 3, and may also regulate the cystic fibrosis transmembrane regulator (CFTR) ion channel. Alternatively spliced transcript variants encoding multiple isoforms have been observed for this gene. |
| Synonyms:             | E3KARP; NHE3RF2; NHERF-2; NHERF2; OCTS2; SIP-1; SIP1; TKA-1   |
| Protein Families:     | Druggable Genome  |



[View online »](#)

**Product images:**

Immunohistochemistry of paraffin-embedded Human breast cancer tissue using [TA351716] (SLC9A3R2 Antibody) at dilution 1/30 (Original magnification: ×200)



Immunohistochemistry of paraffin-embedded Human breast cancer tissue using [TA351716] (SLC9A3R2 Antibody) at dilution 1/30, treated with synthetic peptide. (Original magnification: ×200)