

Product datasheet for **TA351716**

SLC9A3R2 Rabbit Polyclonal Antibody

Product data:

Product Type:	Primary Antibodies
Applications:	IHC
Recommended Dilution:	IHC: 25-100 Positive control: Human breast cancer Predicted cell location: Cytoplasm and Cell membrane
Reactivity:	Human, Rat
Host:	Rabbit
Isotype:	IgG
Clonality:	Polyclonal
Immunogen:	Synthetic peptide of human SLC9A3R2
Formulation:	pH7.4 PBS, 0.05% NaN ₃ , 40% Glycerol
Concentration:	lot specific
Purification:	Antigen affinity purification
Conjugation:	Unconjugated
Storage:	Store at -20°C as received.
Stability:	Stable for 12 months from date of receipt.
Gene Name:	SLC9A3 regulator 2
Database Link:	NP_004776 Entrez Gene 116501 RatEntrez Gene 9351 Human Q15599

Background: This gene encodes a member of the NHERF family of PDZ scaffolding proteins. These proteins mediate many cellular processes by binding to and regulating the membrane expression and protein-protein interactions of membrane receptors and transport proteins. The encoded protein plays a role in intestinal sodium absorption by regulating the activity of the sodium/hydrogen exchanger 3, and may also regulate the cystic fibrosis transmembrane regulator (CFTR) ion channel. Alternatively spliced transcript variants encoding multiple isoforms have been observed for this gene.

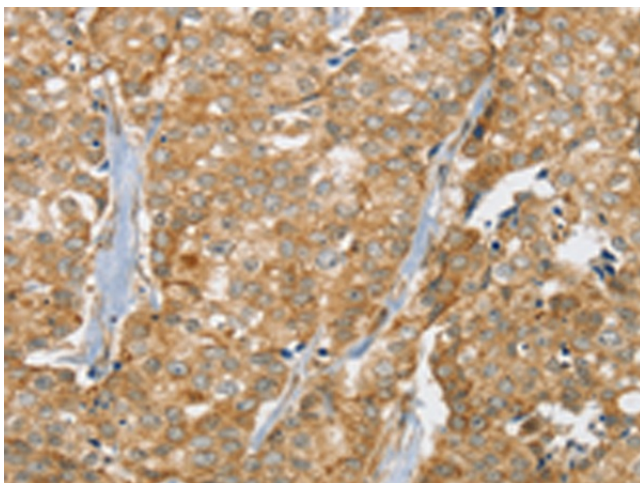
Synonyms: E3KARP; NHE3RF2; NHERF-2; NHERF2; OCTS2; SIP-1; SIP1; TKA-1



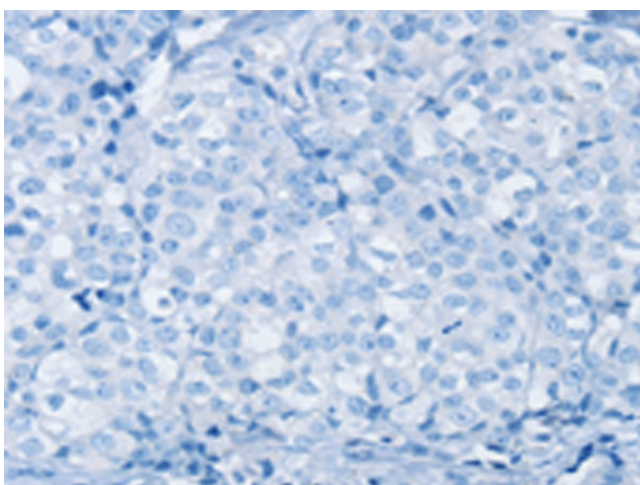
[View online »](#)

Protein Families: Druggable Genome

Product images:



Immunohistochemistry of paraffin-embedded Human breast cancer tissue using TA351716 (SLC9A3R2 Antibody) at dilution 1/30 (Original magnification: $\times 200$)



Immunohistochemistry of paraffin-embedded Human breast cancer tissue using TA351716 (SLC9A3R2 Antibody) at dilution 1/30, treated with synthetic peptide. (Original magnification: $\times 200$)