

## Product datasheet for **TA351715**

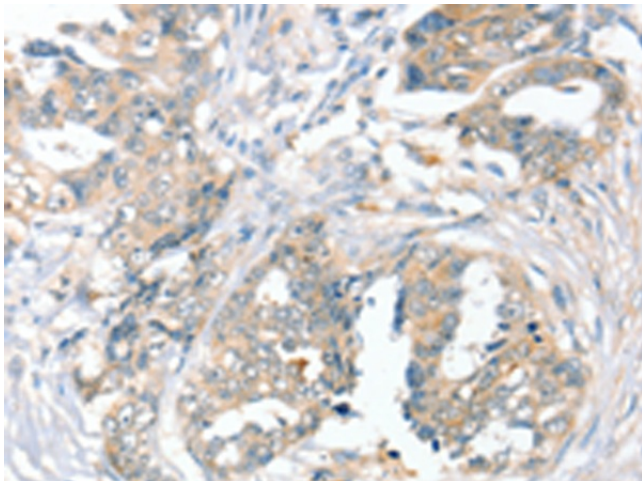
### SLC9A9 Rabbit Polyclonal Antibody

#### Product data:

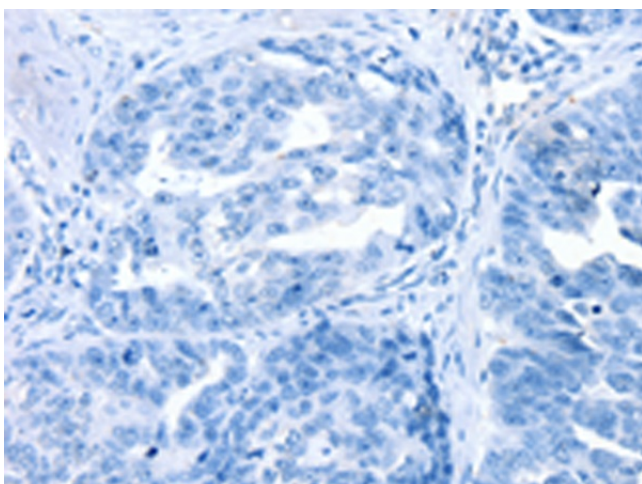
Product Type:	Primary Antibodies
Applications:	IHC
Recommended Dilution:	IHC: 25-100 Positive control: Human cervical cancer Predicted cell location: Cytoplasm and Cell membrane
Reactivity:	Human
Host:	Rabbit
Isotype:	IgG
Clonality:	Polyclonal
Immunogen:	Synthetic peptide of human SLC9A9
Formulation:	pH7.4 PBS, 0.05% NaN <sub>3</sub> , 40% Glycerol
Concentration:	lot specific
Purification:	Antigen affinity purification
Conjugation:	Unconjugated
Storage:	Store at -20°C as received.
Stability:	Stable for 12 months from date of receipt.
Gene Name:	solute carrier family 9 member A9
Database Link:	<a href="#">NP_775924</a> <a href="#">Entrez Gene 285195 Human</a> <a href="#">Q8IVB4</a>
Background:	This gene encodes a sodium/proton exchanger that is a member of the solute carrier 9 protein family. The encoded protein localizes to the late recycling endosomes and may play an important role in maintaining cation homeostasis. Mutations in this gene are associated with autism susceptibility 16 and attention-deficit/hyperactivity disorder.
Synonyms:	AUTS16; NHE9
Protein Families:	Druggable Genome, Transmembrane



[View online »](#)

**Product images:**

Immunohistochemistry of paraffin-embedded Human cervical cancer tissue using TA351715 (SLC9A9 Antibody) at dilution 1/45 (Original magnification:  $\times 200$ )



Immunohistochemistry of paraffin-embedded Human cervical cancer tissue using TA351715 (SLC9A9 Antibody) at dilution 1/45, treated with synthetic peptide. (Original magnification:  $\times 200$ )