

Product datasheet for **TA351712**

SLC8A3 Rabbit Polyclonal Antibody

Product data:

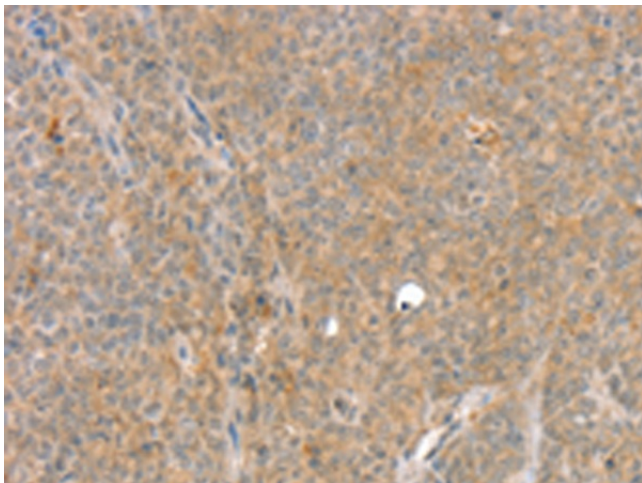
Product Type:	Primary Antibodies
Applications:	IHC
Recommended Dilution:	IHC: 25-100 Positive control: Human ovarian cancer Predicted cell location: Cytoplasm
Reactivity:	Human, Rat
Host:	Rabbit
Isotype:	IgG
Clonality:	Polyclonal
Immunogen:	Synthetic peptide of human SLC8A3
Formulation:	pH7.4 PBS, 0.05% NaN ₃ , 40% Glycerol
Concentration:	lot specific
Purification:	Antigen affinity purification
Conjugation:	Unconjugated
Storage:	Store at -20°C as received.
Stability:	Stable for 12 months from date of receipt.
Gene Name:	solute carrier family 8 member A3
Database Link:	NP_892114 Entrez Gene 140448 RatEntrez Gene 6547 Human P57103
Background:	This gene encodes a member of the sodium/calcium exchanger integral membrane protein family. Na ⁺ /Ca ²⁺ exchange proteins are involved in maintaining Ca ²⁺ homeostasis in a wide variety of cell types. The protein is regulated by intracellular calcium ions and is found in both the plasma membrane and intracellular organellar membranes, where exchange of Na ⁺ for Ca ²⁺ occurs in an electrogenic manner. Alternative splicing has been observed for this gene and multiple variants have been described.
Synonyms:	NCX3
Protein Families:	Transmembrane



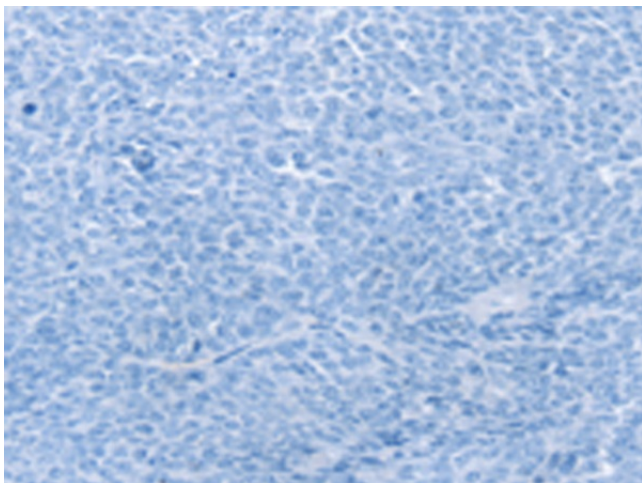
[View online »](#)

Protein Pathways: Calcium signaling pathway

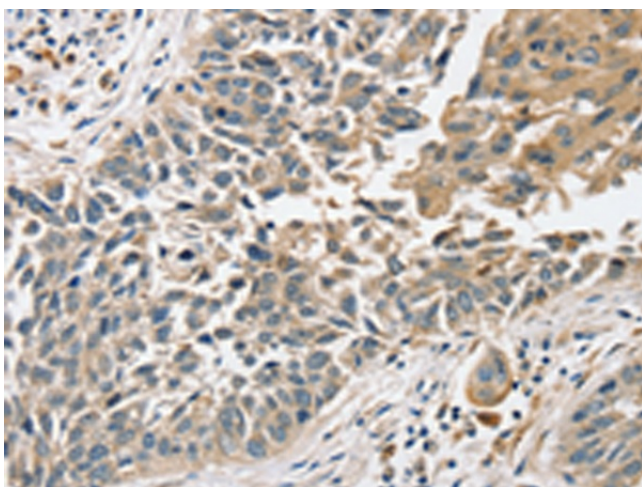
Product images:



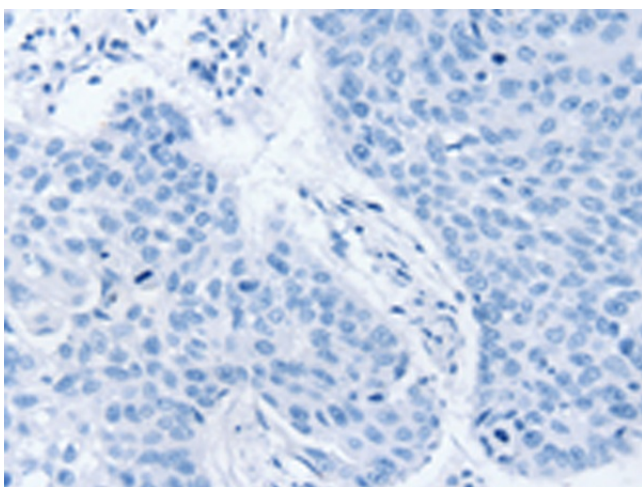
Immunohistochemistry of paraffin-embedded Human ovarian cancer tissue using TA351712 (SLC8A3 Antibody) at dilution 1/35 (Original magnification: $\times 200$)



Immunohistochemistry of paraffin-embedded Human ovarian cancer tissue using TA351712 (SLC8A3 Antibody) at dilution 1/35, treated with synthetic peptide. (Original magnification: $\times 200$)



Immunohistochemistry of paraffin-embedded Human lung cancer tissue using TA351712 (SLC8A3 Antibody) at dilution 1/35 (Original magnification: ×200)



Immunohistochemistry of paraffin-embedded Human lung cancer tissue using TA351712 (SLC8A3 Antibody) at dilution 1/35, treated with synthetic peptide. (Original magnification: ×200)