

## Product datasheet for **TA351710S**

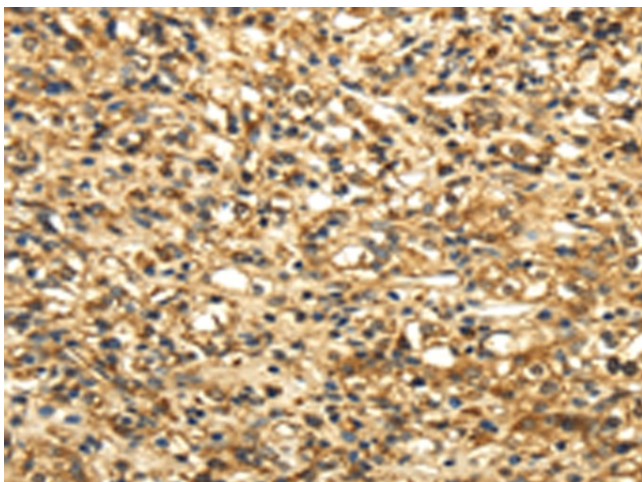
### SLC6A19 Rabbit Polyclonal Antibody

#### Product data:

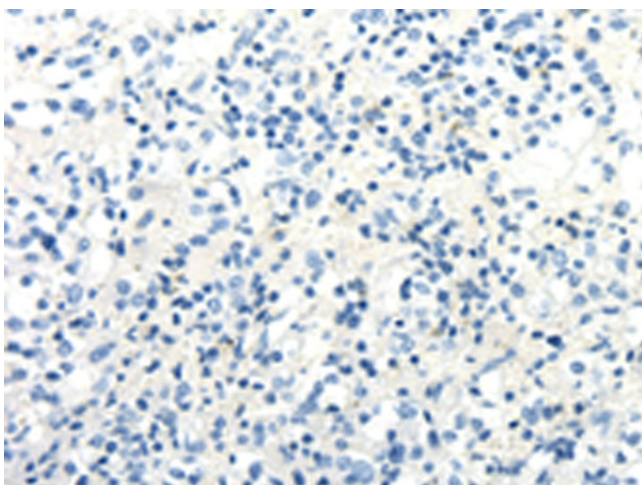
Product Type:	Primary Antibodies
Applications:	IHC
Recommended Dilution:	IHC: 30-150 Positive control: Human prostate cancer Predicted cell location: Cell membrane
Reactivity:	Human
Host:	Rabbit
Isotype:	IgG
Clonality:	Polyclonal
Immunogen:	Synthetic peptide of human SLC6A19
Formulation:	pH7.4 PBS, 0.05% NaN <sub>3</sub> , 40% Glycerol
Purification:	Antigen affinity purification
Conjugation:	Unconjugated
Storage:	Store at -20°C as received.
Stability:	Stable for 12 months from date of receipt.
Gene Name:	solute carrier family 6 member 19
Database Link:	<a href="#">NP_001003841</a> <a href="#">Entrez Gene 340024 Human</a> <a href="#">Q695T7</a>
Background:	This gene encodes a system B(0) transmembrane protein that actively transports most neutral amino acids across the apical membrane of epithelial cells. Mutations in this gene result in Hartnup disorder.
Synonyms:	B0AT1; HND
Protein Families:	Druggable Genome, Transmembrane

[View online »](#)

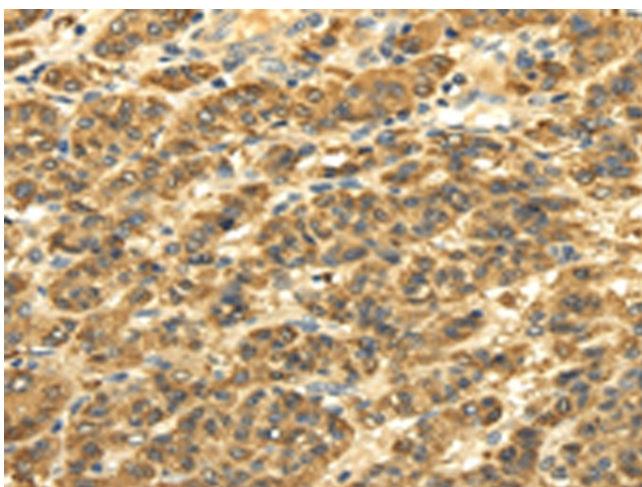
## Product images:



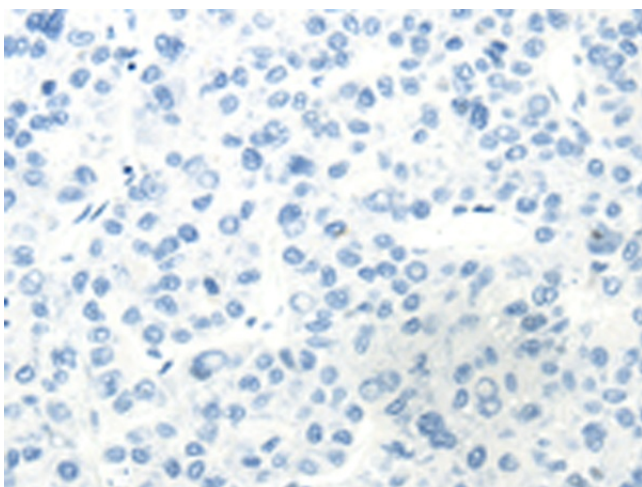
Immunohistochemistry of paraffin-embedded Human prostate cancer tissue using [TA351710] (SLC6A19 Antibody) at dilution 1/35 (Original magnification: ×200)



Immunohistochemistry of paraffin-embedded Human prostate cancer tissue using [TA351710] (SLC6A19 Antibody) at dilution 1/35, treated with synthetic peptide. (Original magnification: ×200)



Immunohistochemistry of paraffin-embedded Human liver cancer tissue using [TA351710] (SLC6A19 Antibody) at dilution 1/35 (Original magnification: ×200)



Immunohistochemistry of paraffin-embedded Human liver cancer tissue using [TA351710] (SLC6A19 Antibody) at dilution 1/35, treated with synthetic peptide. (Original magnification: ×200)