

Product datasheet for **TA351708**

SLC5A9 Rabbit Polyclonal Antibody

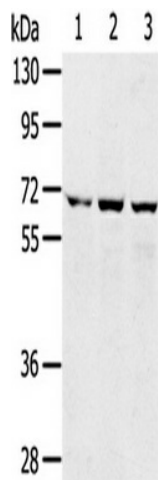
Product data:

Product Type:	Primary Antibodies
Applications:	WB
Recommended Dilution:	ELISA: 2000-5000, WB: 500-2000
Reactivity:	Human
Host:	Rabbit
Isotype:	IgG
Clonality:	Polyclonal
Immunogen:	Synthetic peptide of human SLC5A9
Formulation:	pH7.4 PBS, 0.05% NaN ₃ , 40% Glycerol
Concentration:	lot specific
Purification:	Antigen affinity purification
Conjugation:	Unconjugated
Storage:	Store at -20°C as received.
Stability:	Stable for 12 months from date of receipt.
Predicted Protein Size:	74 kDa
Gene Name:	solute carrier family 5 member 9
Database Link:	NP_001011547 Entrez Gene 200010 Human Q2M3M2
Background:	SGLT-4 (sodium/glucose cotransporter 4), also known as SLC5A9 (solute carrier family 5 member 9), is a 681 amino acid multi-pass membrane protein that participates in the sodium-dependent transport of D-fructose, D-mannose and D-glucose. A member of the sodium:solute symporter (SSF) family, SGLT-4 is found in small intestine and kidney.
Synonyms:	SGLT4
Protein Families:	Transmembrane



[View online »](#)

Product images:



Gel: 8%SDS-PAGE, Lysate: 40 ug, Lane 1-3: 293T cells, hepg2 cells, A172 cells, Primary antibody: (SLC5A9 Antibody) at dilution 1/300, Secondary antibody: Goat anti rabbit IgG at 1/8000 dilution, Exposure time: 1 minute