

## Product datasheet for **TA351707**

### SLC5A6 Rabbit Polyclonal Antibody

#### Product data:

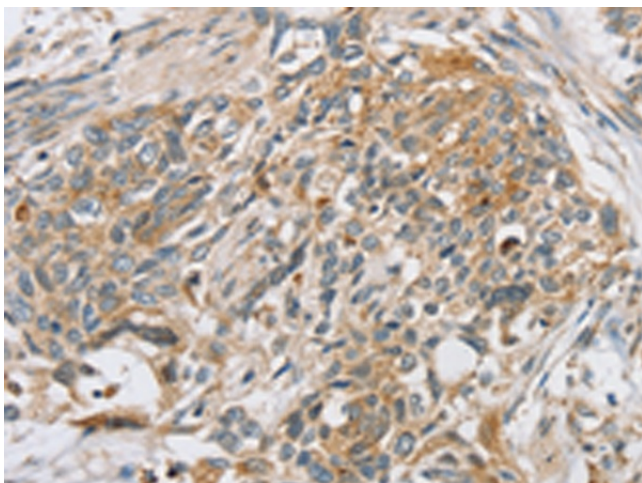
Product Type:	Primary Antibodies
Applications:	IHC
Recommended Dilution:	IHC: 25-100 Positive control: Human esophagus cancer Predicted cell location: Cytoplasm or Cell membrane
Reactivity:	Human
Host:	Rabbit
Isotype:	IgG
Clonality:	Polyclonal
Immunogen:	Synthetic peptide of human SLC5A6
Formulation:	pH7.4 PBS, 0.05% NaN <sub>3</sub> , 40% Glycerol
Concentration:	lot specific
Purification:	Antigen affinity purification
Conjugation:	Unconjugated
Storage:	Store at -20°C as received.
Stability:	Stable for 12 months from date of receipt.
Gene Name:	solute carrier family 5 member 6
Database Link:	<a href="#">NP_066918</a> <a href="#">Entrez Gene 8884 Human</a> <a href="#">Q9Y289</a>
Background:	SLC5A6 is a 635 amino acid protein that belongs to the sodium-coupled glucose transporter family. SMVT contains 12 putative transmembrane domains with the N and C termini both facing towards the cytoplasm. Its function is to transport the essential vitamins pantothenate, biotin, and the metabolite lipoate into cells of various human tissues. Biotin, also known as vitamin B6, is important in synthesizing fatty acids gluconeogenesis, and metabolizing leucine, while pantothenate, or vitamin B5, is critical in the metabolism and synthesis of carbohydrates, proteins, and fats. Lipoate is involved in oxidative metabolism.
Synonyms:	SMVT



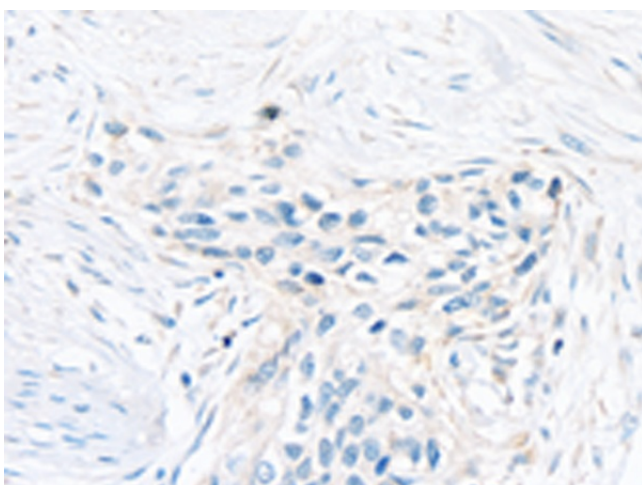
[View online »](#)

Protein Families: Transmembrane

### Product images:



Immunohistochemistry of paraffin-embedded Human esophagus cancer tissue using TA351707 (SLC5A6 Antibody) at dilution 1/20 (Original magnification: ×200)



Immunohistochemistry of paraffin-embedded Human esophagus cancer tissue using TA351707 (SLC5A6 Antibody) at dilution 1/20, treated with synthetic peptide. (Original magnification: ×200)