

## Product datasheet for **TA351706**

### SLC5A11 Rabbit Polyclonal Antibody

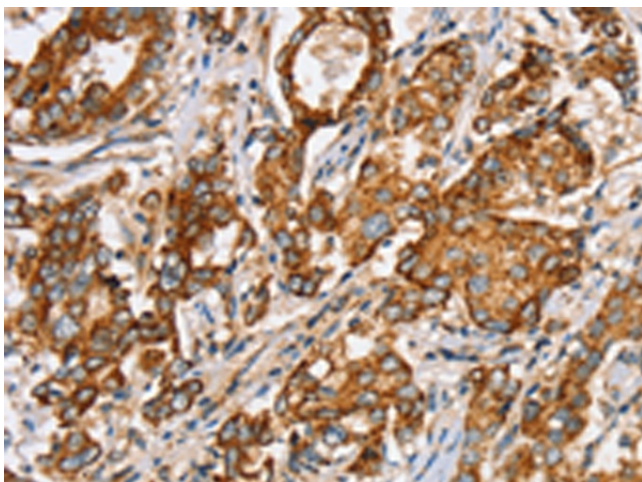
#### Product data:

Product Type:	Primary Antibodies
Applications:	IHC
Recommended Dilution:	IHC: 30-150 Positive control: Human liver cancer Predicted cell location: Cytoplasm or Cell membrane
Reactivity:	Human, Mouse, Rat
Host:	Rabbit
Isotype:	IgG
Clonality:	Polyclonal
Immunogen:	Synthetic peptide of human SLC5A11
Formulation:	pH7.4 PBS, 0.05% NaN <sub>3</sub> , 40% Glycerol
Concentration:	lot specific
Purification:	Antigen affinity purification
Conjugation:	Unconjugated
Storage:	Store at -20°C as received.
Stability:	Stable for 12 months from date of receipt.
Gene Name:	solute carrier family 5 member 11
Database Link:	<a href="#">NP_443176</a> <a href="#">Entrez Gene 233836 Mouse</a> <a href="#">Entrez Gene 252854 Rat</a> <a href="#">Entrez Gene 115584 Human</a> <a href="#">Q8WWX8</a>
Background:	Cotransporters, such as SLC5A11, represent a major class of proteins that make use of ion gradients to drive active transport for the cellular accumulation of nutrients, neurotransmitters, osmolytes, and ions Roll et al.
Synonyms:	KST1; RKST1; SGLT6; SMIT2

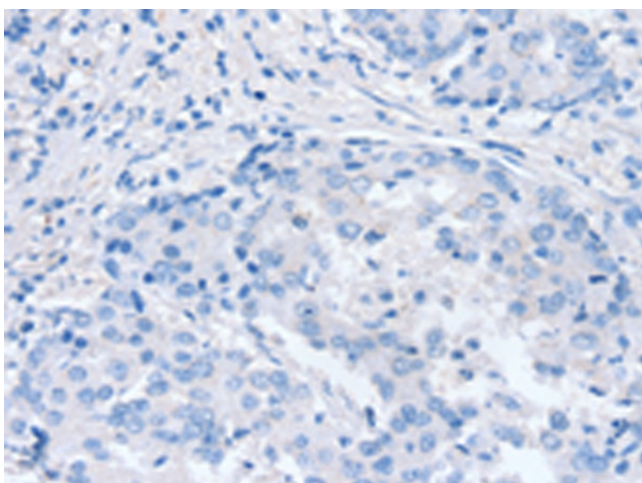


[View online »](#)

## Product images:



Immunohistochemistry of paraffin-embedded Human liver cancer tissue using TA351706 (SLC5A11 Antibody) at dilution 1/35 (Original magnification: ×200)



Immunohistochemistry of paraffin-embedded Human liver cancer tissue using TA351706 (SLC5A11 Antibody) at dilution 1/35, treated with synthetic peptide. (Original magnification: ×200)