

Product datasheet for **TA351703**

SLC44A1 Rabbit Polyclonal Antibody

Product data:

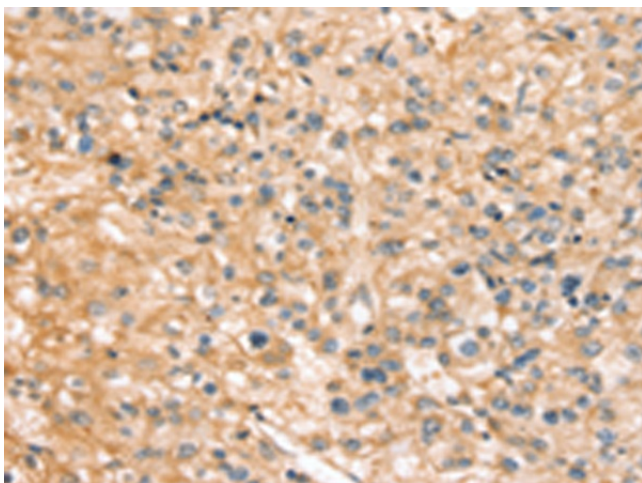
Product Type:	Primary Antibodies
Applications:	IHC
Recommended Dilution:	IHC: 25-100 Positive control: Human prostate cancer Predicted cell location: Cytoplasm or Cell membrane
Reactivity:	Human, Mouse, Rat
Host:	Rabbit
Isotype:	IgG
Clonality:	Polyclonal
Immunogen:	Synthetic peptide of human SLC44A1
Formulation:	pH7.4 PBS, 0.05% NaN ₃ , 40% Glycerol
Concentration:	lot specific
Purification:	Antigen affinity purification
Conjugation:	Unconjugated
Storage:	Store at -20°C as received.
Stability:	Stable for 12 months from date of receipt.
Gene Name:	solute carrier family 44 member 1
Database Link:	NP_536856 Entrez Gene 85254 Rat Entrez Gene 100434 Mouse Entrez Gene 23446 Human Q8WWI5
Background:	CD92, also known as SLC44A1 (solute carrier family 44, member 1), CDw92 or CTL1 (choline transporter-like protein 1), is a 657 amino acid multi-pass membrane protein that belongs to the choline transporter-like family of solute carrier proteins. Expressed in cells that are associated with the hematopoietic system, CD92 functions as a choline transporter that may be involved in myelin production, as well as in membrane synthesis. Human CD92 shares 96% sequence homology with its mouse counterpart, suggesting a conserved role between species. Three isoforms of CD92 exist due to alternative splicing events.
Synonyms:	CD92; CDW92; CHTL1; CTL1



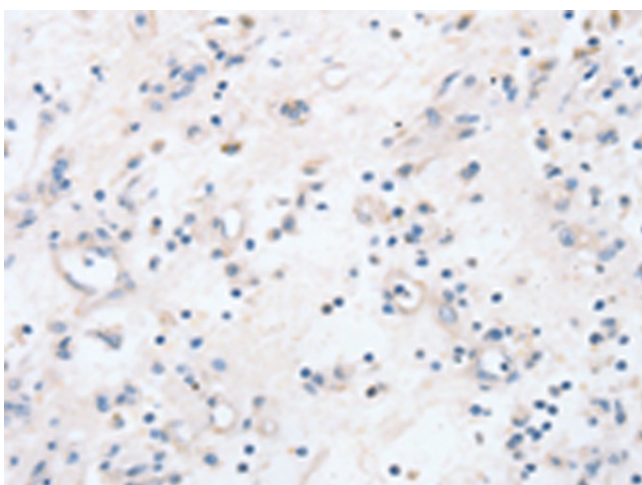
[View online »](#)

Protein Families: Transmembrane

Product images:



Immunohistochemistry of paraffin-embedded Human prostate cancer tissue using TA351703 (SLC44A1 Antibody) at dilution 1/20 (Original magnification: $\times 200$)



Immunohistochemistry of paraffin-embedded Human prostate cancer tissue using TA351703 (SLC44A1 Antibody) at dilution 1/20, treated with synthetic peptide. (Original magnification: $\times 200$)