

Product datasheet for **TA351701S**

SLC41A2 Rabbit Polyclonal Antibody

Product data:

Product Type:	Primary Antibodies
Applications:	IHC, WB
Recommended Dilution:	WB: 500-2000 WB positive control: Human liver cancer tissue, Human lung adenocarcinoma tissue, Human lung cancer tissue lysates IHC: 40-150 Positive control: Human esophagus cancer Predicted cell location: Cytoplasm
Reactivity:	Human, Mouse
Host:	Rabbit
Isotype:	IgG
Clonality:	Polyclonal
Immunogen:	Synthetic peptide of human SLC41A2
Formulation:	pH7.4 PBS, 0.05% NaN ₃ , 40% Glycerol
Purification:	Antigen affinity purification
Conjugation:	Unconjugated
Storage:	Store at -20°C as received.
Stability:	Stable for 12 months from date of receipt.
Gene Name:	solute carrier family 41 member 2
Database Link:	NP_115524 Entrez Gene 338365 Mouse Entrez Gene 84102 Human Q96JW4



[View online »](#)

Background:

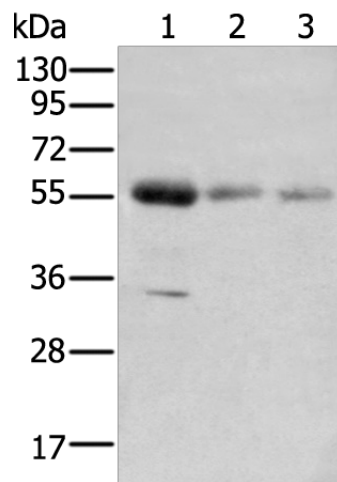
SLC41A2 (solute carrier family 41, member 2), also known as SLC41A1-L, is a 573 amino acid multi-pass membrane protein that belongs to the SLC41A transporter family that includes SLC41A1 and SLC41A3. Expressed in lymphocytes and localizing to the cell membrane, SLC41A2 contains twelve transmembrane domains, three myristoylation sequences, numerous possible phosphorylation sites and a putative N-glycosylation site. SLC41A2 is believed to function as a plasma-membrane magnesium transporter. Magnesium, a cofactor for ATP, plays a vital role in metabolic and biochemical processes. The transport of magnesium across membranes is essential for maintaining magnesium homeostasis and is fundamental to vertebrate metabolism.

Synonyms:

SLC41A1-L1

Protein Families:

Transmembrane

Product images:

Gel: 8%SDS-PAGE

Lysate: 40 μ g

Lane 1-3: Human liver cancer tissue

Human lung adenocarcinoma tissue

Human lung cancer tissue lysates

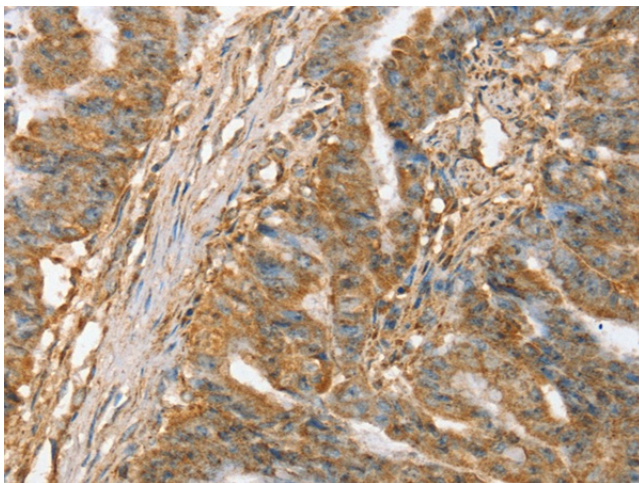
Primary antibody: [TA351701] (SLC41A2

Antibody) at dilution 1/400

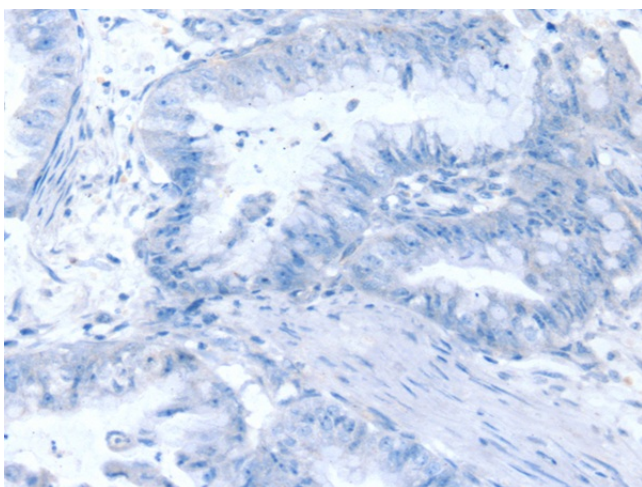
Secondary antibody: Goat anti rabbit IgG at

1/8000 dilution

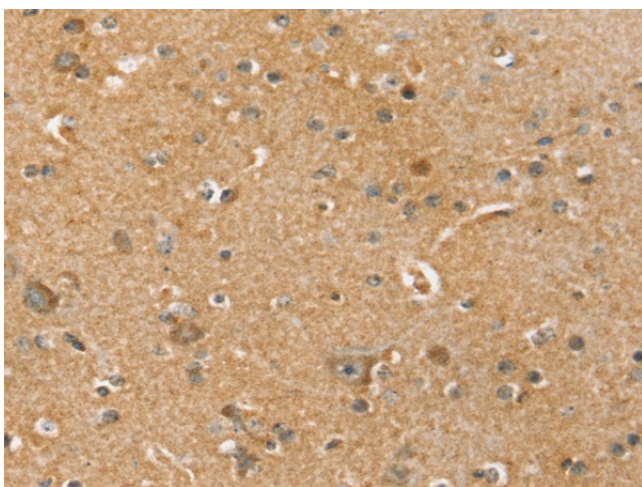
Exposure time: 4 minutes



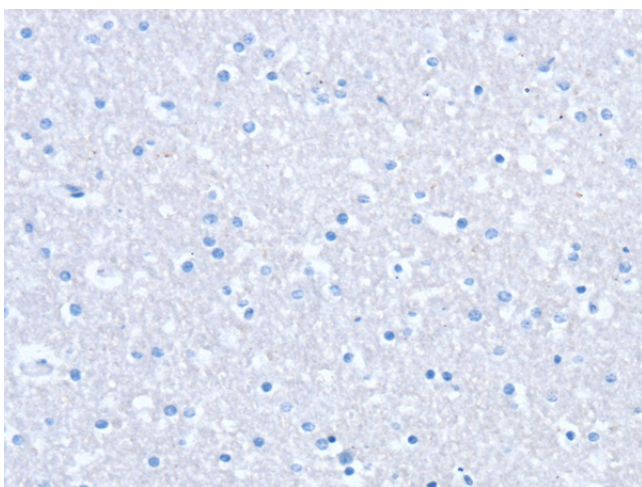
Immunohistochemistry of paraffin-embedded Human esophagus cancer tissue using [TA351701] (SLC41A2 Antibody) at dilution 1/45 (Original magnification: \times 200)



Immunohistochemistry of paraffin-embedded Human esophagus cancer tissue using [TA351701] (SLC41A2 Antibody) at dilution 1/45, treated with synthetic peptide. (Original magnification: ×200)



Immunohistochemistry of paraffin-embedded Human brain tissue using [TA351701] (SLC41A2 Antibody) at dilution 1/45 (Original magnification: ×200)



Immunohistochemistry of paraffin-embedded Human brain tissue using [TA351701] (SLC41A2 Antibody) at dilution 1/45, treated with synthetic peptide. (Original magnification: ×200)