

## Product datasheet for **TA351699**

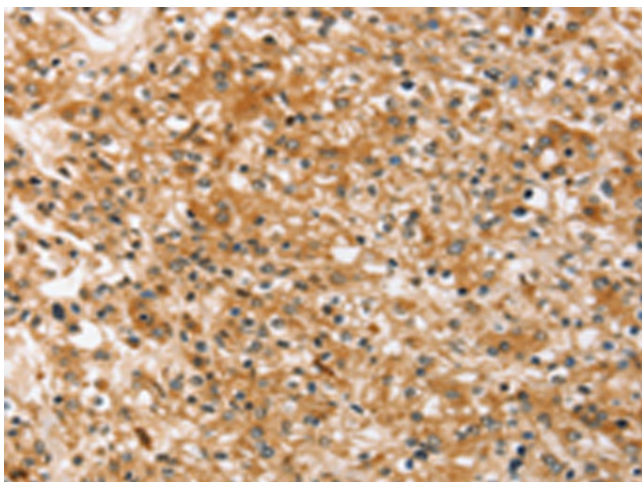
### SLC40A1 Rabbit Polyclonal Antibody

#### Product data:

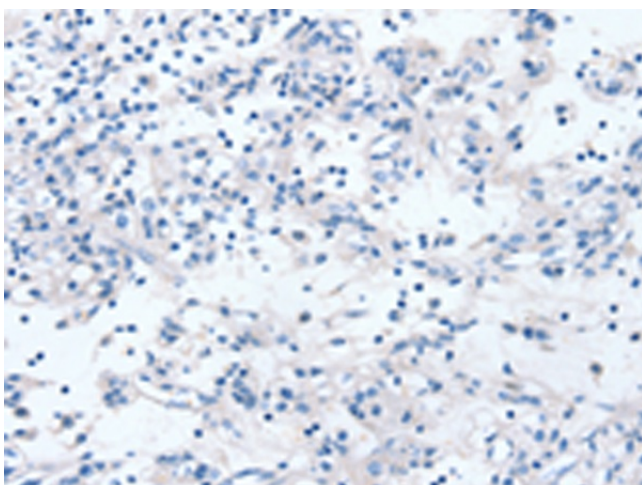
Product Type:	Primary Antibodies
Applications:	IHC
Recommended Dilution:	IHC: 25-100 Positive control: Human prostate cancer Predicted cell location: Cytoplasm or Cell membrane
Reactivity:	Human
Host:	Rabbit
Isotype:	IgG
Clonality:	Polyclonal
Immunogen:	Synthetic peptide of human SLC40A1
Formulation:	pH7.4 PBS, 0.05% NaN <sub>3</sub> , 40% Glycerol
Concentration:	lot specific
Purification:	Antigen affinity purification
Conjugation:	Unconjugated
Storage:	Store at -20°C as received.
Stability:	Stable for 12 months from date of receipt.
Gene Name:	solute carrier family 40 member 1
Database Link:	<a href="#">NP_055400</a> <a href="#">Entrez Gene 30061 Human</a> <a href="#">Q9NP59</a>
Background:	The protein encoded by this gene is a cell membrane protein that may be involved in iron export from duodenal epithelial cells. Defects in this gene are a cause of hemochromatosis type 4 (HFE4).
Synonyms:	FPN1; HFE4; IREG1; MST079; MSTP079; MTP1; SLC11A3
Protein Families:	Druggable Genome, Transmembrane



[View online »](#)

**Product images:**

Immunohistochemistry of paraffin-embedded Human prostate cancer tissue using TA351699 (SLC40A1 Antibody) at dilution 1/20 (Original magnification:  $\times 200$ )



Immunohistochemistry of paraffin-embedded Human prostate cancer tissue using TA351699 (SLC40A1 Antibody) at dilution 1/20, treated with synthetic peptide. (Original magnification:  $\times 200$ )