

## Product datasheet for **TA351698**

### SLC39A9 Rabbit Polyclonal Antibody

#### Product data:

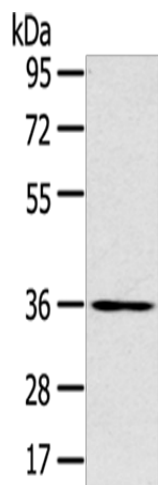
Product Type:	Primary Antibodies
Applications:	WB
Recommended Dilution:	WB: 200-1000 WB positive control: Jurkat cells
Reactivity:	Human
Host:	Rabbit
Isotype:	IgG
Clonality:	Polyclonal
Immunogen:	Synthetic peptide of human SLC39A9
Formulation:	pH7.4 PBS, 0.05% NaN <sub>3</sub> , 40% Glycerol
Concentration:	lot specific
Purification:	Antigen affinity purification
Conjugation:	Unconjugated
Storage:	Store at -20°C as received.
Stability:	Stable for 12 months from date of receipt.
Predicted Protein Size:	32 kDa
Gene Name:	solute carrier family 39 member 9
Database Link:	<a href="#">NP_060845</a> <a href="#">Entrez Gene 55334 Human</a> <a href="#">Q9NUM3</a>
Background:	ZIP9 (Zinc transporter ZIP9, Solute carrier family 39 member 9) is a multi-pass (seven transmembrane regions) membrane protein that belongs to the ZIP transporter (TC 2.A.5) family. Zinc transporters all have transmembrane domains, and are encoded by two SLC (solute-linked carrier) gene families: ZnT (SLC30) and Zip (SLC39). There are at least 9 ZnT and 15 Zip transporters in human cells. Zip transporters are believed to increase intracellular zinc by promoting zinc uptake.
Synonyms:	ZIP-9; ZIP9



[View online »](#)

Protein Families: Transmembrane

**Product images:**



Gel: 8%SDS-PAGE  
Lysate: 40  $\mu$ g  
Lane: Jurkat cells  
Primary antibody: TA351698 (SLC39A9 Antibody)  
at dilution 1/200  
Secondary antibody: Goat anti rabbit IgG at  
1/8000 dilution  
Exposure time: 1 minute