

## Product datasheet for TA351696

### SLC39A3 Rabbit Polyclonal Antibody

#### Product data:

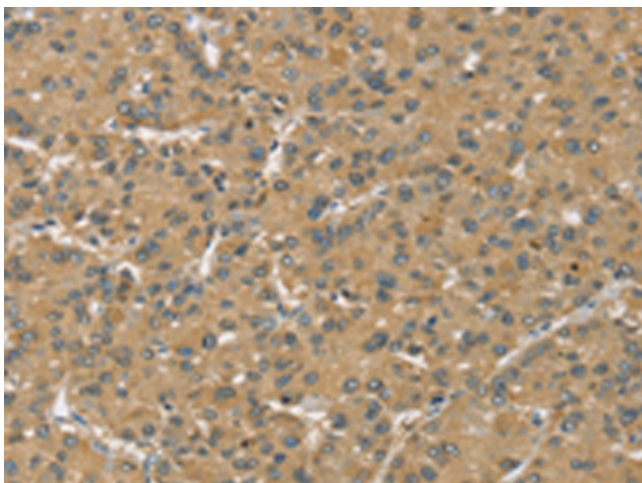
Product Type:	Primary Antibodies
Applications:	IHC
Recommended Dilution:	IHC: 25-100 Positive control: Human liver cancer Predicted cell location: Cytoplasm
Reactivity:	Human, Mouse, Rat
Host:	Rabbit
Isotype:	IgG
Clonality:	Polyclonal
Immunogen:	Synthetic peptide of human SLC39A3
Formulation:	pH7.4 PBS, 0.05% NaN <sub>3</sub> , 40% Glycerol
Concentration:	lot specific
Purification:	Antigen affinity purification
Conjugation:	Unconjugated
Storage:	Store at -20°C as received.
Stability:	Stable for 12 months from date of receipt.
Gene Name:	solute carrier family 39 member 3
Database Link:	<a href="#">NP_998733</a> <a href="#">Entrez Gene 106947 Mouse</a> <a href="#">Entrez Gene 29985 Human</a> <a href="#">Q9BRY0</a>
Background:	SLC39A3 (solute carrier family 39, member 2), is a 314 amino acid acid multi-pass membrane protein that localizes to the cell membrane and belongs to the ZIP family of zinc transporters. Two isoforms of ZIP3 exist as a result of alternative splicing events. ZIP3 is involved in translocation of extracellular zinc into a variety of cell types. Tumorigenic prostate epithelial cells contain less intracellular zinc than non-tumorigenic prostate epithelial cells. Loss of the ability to maintain zinc accumulation may be caused by the decrease in the ZIP1 protein expression and the intracellular redistribution of ZIP3.
Synonyms:	ZIP-3; ZIP3



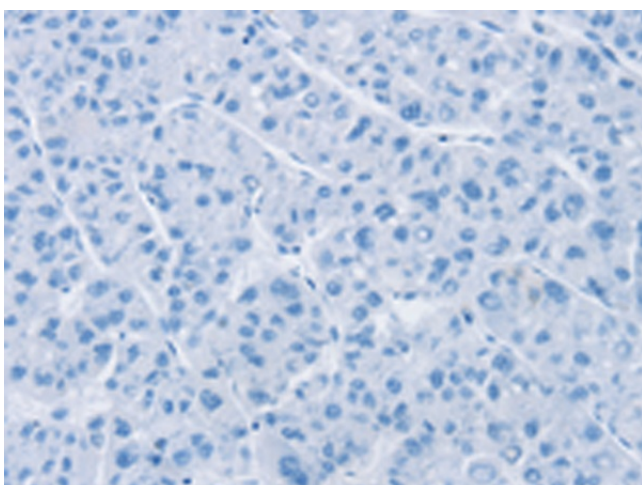
[View online »](#)

Protein Families: Transmembrane

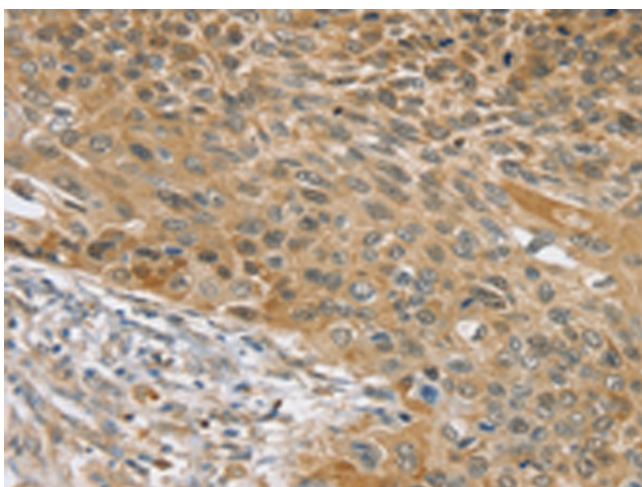
### Product images:



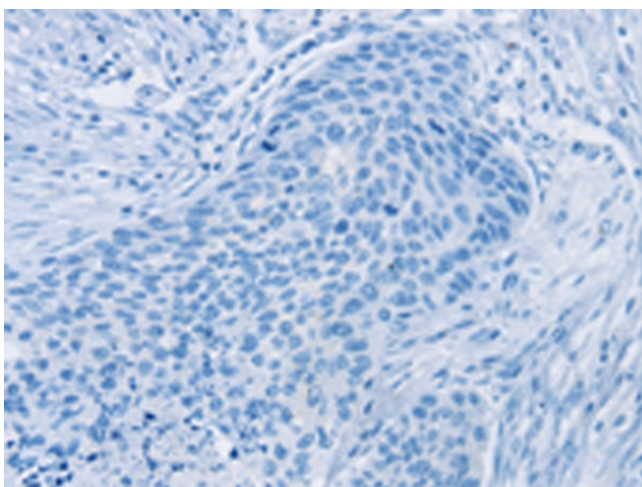
Immunohistochemistry of paraffin-embedded Human liver cancer tissue using TA351696 (SLC39A3 Antibody) at dilution 1/30 (Original magnification:  $\times 200$ )



Immunohistochemistry of paraffin-embedded Human liver cancer tissue using TA351696 (SLC39A3 Antibody) at dilution 1/30, treated with synthetic peptide. (Original magnification:  $\times 200$ )



Immunohistochemistry of paraffin-embedded Human esophagus cancer tissue using TA351696 (SLC39A3 Antibody) at dilution 1/30 (Original magnification:  $\times 200$ )



Immunohistochemistry of paraffin-embedded Human esophagus cancer tissue using TA351696 (SLC39A3 Antibody) at dilution 1/30, treated with synthetic peptide. (Original magnification:  $\times 200$ )