

Product datasheet for **TA351694S**

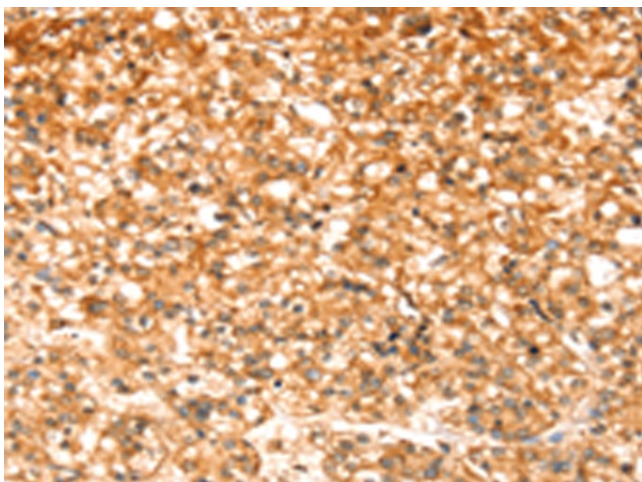
SLC32A1 Rabbit Polyclonal Antibody

Product data:

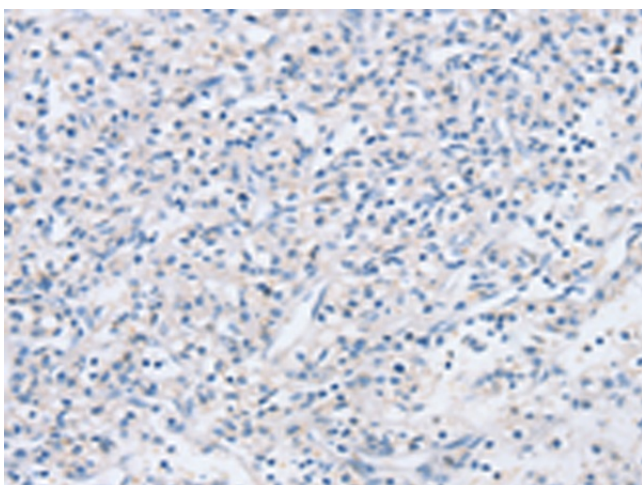
Product Type:	Primary Antibodies
Applications:	IHC
Recommended Dilution:	IHC: 25-100 Positive control: Human prostate cancer Predicted cell location: Cytoplasm or Cell membrane
Reactivity:	Human, Mouse, Rat
Host:	Rabbit
Isotype:	IgG
Clonality:	Polyclonal
Immunogen:	Synthetic peptide of human SLC32A1
Formulation:	pH7.4 PBS, 0.05% NaN ₃ , 40% Glycerol
Purification:	Antigen affinity purification
Conjugation:	Unconjugated
Storage:	Store at -20°C as received.
Stability:	Stable for 12 months from date of receipt.
Gene Name:	solute carrier family 32 member 1
Database Link:	NP_542119 Entrez Gene 22348 Mouse Entrez Gene 83612 Rat Entrez Gene 140679 Human Q9H598
Background:	The protein encoded by this gene is an integral membrane protein involved in gamma-aminobutyric acid (GABA) and glycine uptake into synaptic vesicles. The encoded protein is a member of amino acid/polyamine transporter family II.
Synonyms:	VGAT; VIAAT
Protein Families:	Transmembrane



[View online »](#)

Product images:

Immunohistochemistry of paraffin-embedded Human prostate cancer tissue using [TA351694] (SLC32A1 Antibody) at dilution 1/20 (Original magnification: $\times 200$)



Immunohistochemistry of paraffin-embedded Human prostate cancer tissue using [TA351694] (SLC32A1 Antibody) at dilution 1/20, treated with synthetic peptide. (Original magnification: $\times 200$)