

Product datasheet for **TA351693**

SLC27A5 Rabbit Polyclonal Antibody

Product data:

Product Type:	Primary Antibodies
Applications:	IHC, WB
Recommended Dilution:	WB: 200-1000 WB positive control: Mouse liver tissue IHC: 25-100 Positive control: Human liver cancer Predicted cell location: Cytoplasm
Reactivity:	Human, Mouse
Host:	Rabbit
Isotype:	IgG
Clonality:	Polyclonal
Immunogen:	Synthetic peptide of human SLC27A5
Formulation:	pH7.4 PBS, 0.05% NaN ₃ , 40% Glycerol
Concentration:	lot specific
Purification:	Antigen affinity purification
Conjugation:	Unconjugated
Storage:	Store at -20°C as received.
Stability:	Stable for 12 months from date of receipt.
Predicted Protein Size:	75 kDa
Gene Name:	solute carrier family 27 member 5
Database Link:	NP_036386 Entrez Gene 26459 Mouse Entrez Gene 10998 Human Q9Y2P5

Background: The protein encoded by this gene is an isozyme of very long-chain acyl-CoA synthetase (VLCS). It is capable of activating very long-chain fatty-acids containing 24- and 26-carbons. It is expressed in liver and associated with endoplasmic reticulum but not with peroxisomes. Its primary role is in fatty acid elongation or complex lipid synthesis rather than in degradation. This gene has a mouse ortholog.



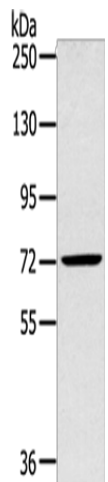
[View online »](#)

Synonyms: ACSB; ACSVL6; BACS; BAL; FACVL3; FATP-5; FATP5; VLACSR; VLCS-H2; VLCSH2

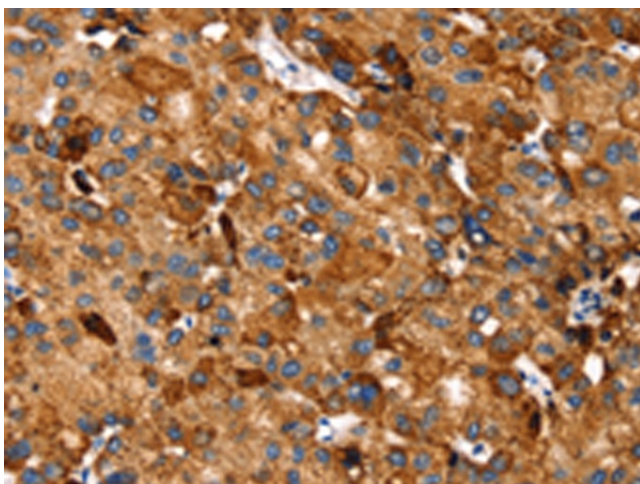
Protein Families: Transmembrane

Protein Pathways: Metabolic pathways, PPAR signaling pathway, Primary bile acid biosynthesis

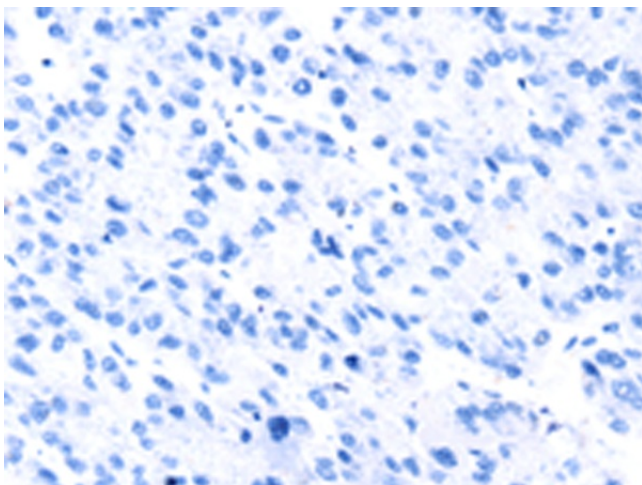
Product images:



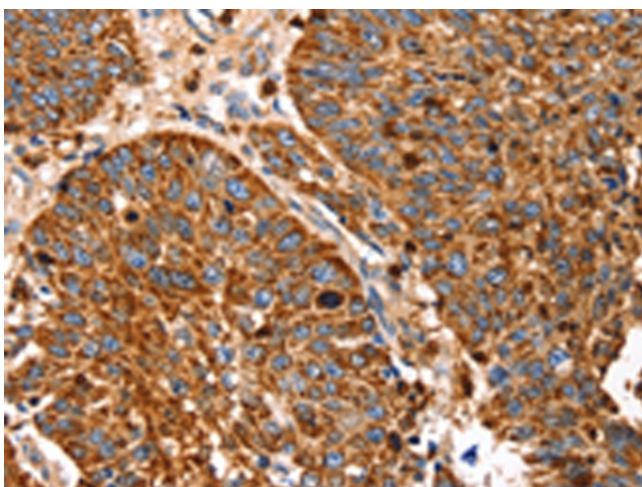
Gel: 6%SDS-PAGE
Lysate: 40 μ g
Lane: Mouse liver tissue
Primary antibody: TA351693 (SLC27A5 Antibody) at dilution 1/250
Secondary antibody: Goat anti rabbit IgG at 1/8000 dilution
Exposure time: 2 minutes



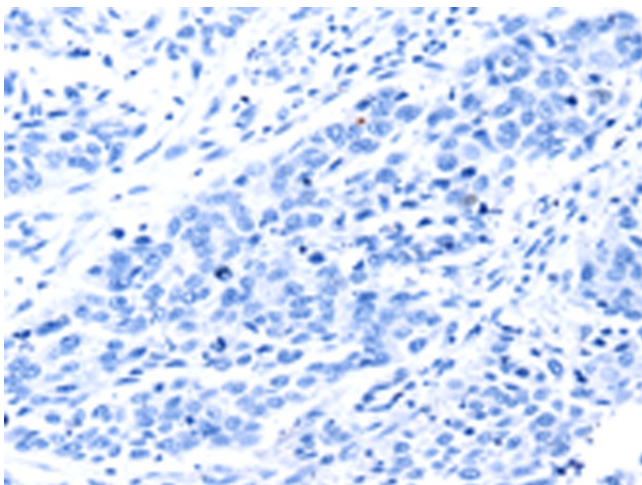
Immunohistochemistry of paraffin-embedded Human liver cancer tissue using TA351693 (SLC27A5 Antibody) at dilution 1/20 (Original magnification: \times 200)



Immunohistochemistry of paraffin-embedded Human liver cancer tissue using TA351693 (SLC27A5 Antibody) at dilution 1/20, treated with synthetic peptide. (Original magnification: ×200)



Immunohistochemistry of paraffin-embedded Human lung cancer tissue using TA351693 (SLC27A5 Antibody) at dilution 1/20 (Original magnification: ×200)



Immunohistochemistry of paraffin-embedded Human lung cancer tissue using TA351693 (SLC27A5 Antibody) at dilution 1/20, treated with synthetic peptide. (Original magnification: ×200)