

## Product datasheet for **TA351692S**

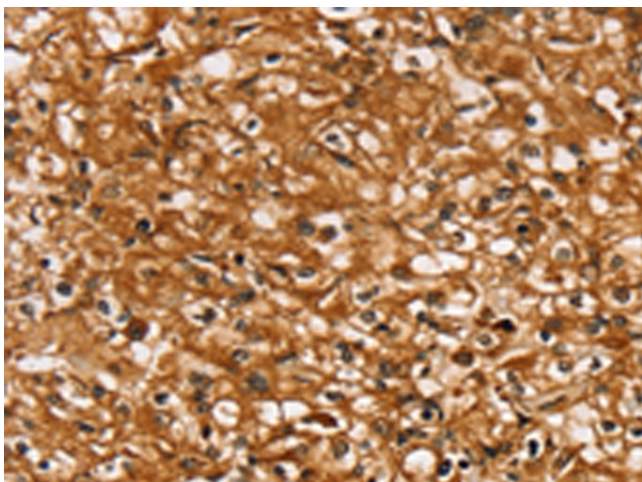
### SLC26A6 Rabbit Polyclonal Antibody

#### Product data:

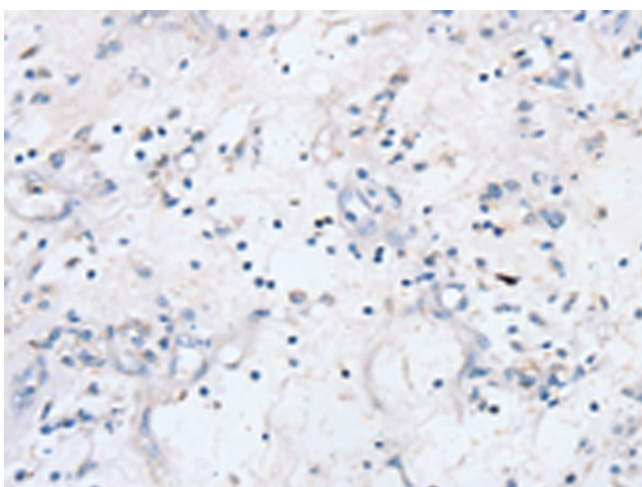
|                       |  |
|-----------------------|--|
| Product Type:         | Primary Antibodies   |
| Applications:         | IHC  |
| Recommended Dilution: | IHC: 25-100<br>Positive control: Human prostate cancer<br>Predicted cell location: Cytoplasm or Cell membrane  |
| Reactivity:           | Human  |
| Host:                 | Rabbit   |
| Isotype:              | IgG  |
| Clonality:            | Polyclonal   |
| Immunogen:            | Synthetic peptide of human SLC26A6   |
| Formulation:          | pH7.4 PBS, 0.05% NaN <sub>3</sub> , 40% Glycerol   |
| Purification:         | Antigen affinity purification  |
| Conjugation:          | Unconjugated   |
| Storage:              | Store at -20°C as received.  |
| Stability:            | Stable for 12 months from date of receipt.   |
| Gene Name:            | solute carrier family 26 member 6  |
| Database Link:        | <a href="#">NP_599025</a><br><a href="#">Entrez Gene 65010 Human</a><br><a href="#">Q9BXS9</a>   |
| Background:           | This gene belongs to the solute carrier 26 family, whose members encode anion transporter proteins. This particular family member encodes a protein involved in transporting chloride, oxalate, sulfate and bicarbonate. Alternatively spliced transcript variants encoding distinct isoforms have been described. |
| Synonyms:             | DKFZp586E1422  |
| Protein Families:     | Transmembrane  |



[View online »](#)

**Product images:**

Immunohistochemistry of paraffin-embedded Human prostate cancer tissue using [TA351692] (SLC26A6 Antibody) at dilution 1/20 (Original magnification:  $\times 200$ )



Immunohistochemistry of paraffin-embedded Human prostate cancer tissue using [TA351692] (SLC26A6 Antibody) at dilution 1/20, treated with synthetic peptide. (Original magnification:  $\times 200$ )