

## Product datasheet for **TA351691S**

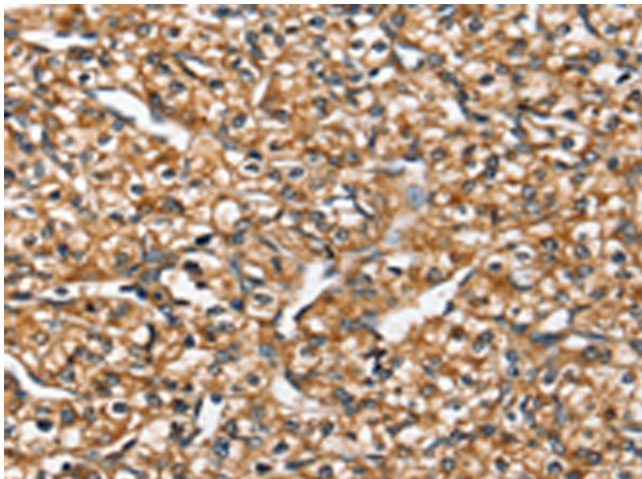
### SLC26A5 Rabbit Polyclonal Antibody

#### Product data:

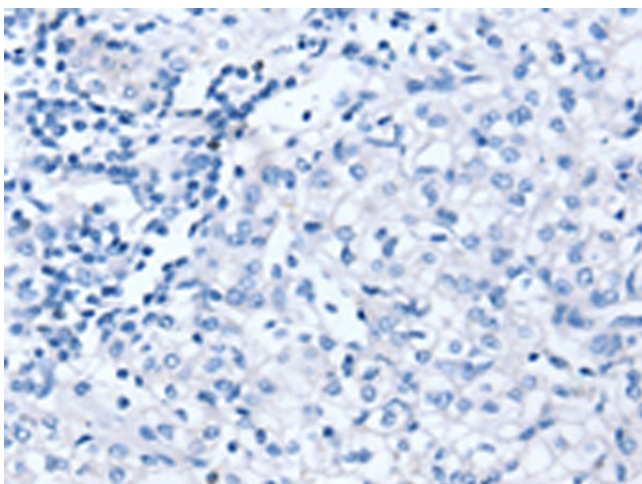
|                       |   |
|-----------------------|---|
| Product Type:         | Primary Antibodies  |
| Applications:         | IHC   |
| Recommended Dilution: | IHC: 25-100<br>Positive control: Human prostate cancer<br>Predicted cell location: Cytoplasm or Cell membrane   |
| Reactivity:           | Human, Mouse, Rat   |
| Host:                 | Rabbit  |
| Isotype:              | IgG   |
| Clonality:            | Polyclonal  |
| Immunogen:            | Synthetic peptide of human SLC26A5  |
| Formulation:          | pH7.4 PBS, 0.05% NaN <sub>3</sub> , 40% Glycerol  |
| Purification:         | Antigen affinity purification   |
| Conjugation:          | Unconjugated  |
| Storage:              | Store at -20°C as received.   |
| Stability:            | Stable for 12 months from date of receipt.  |
| Gene Name:            | solute carrier family 26 member 5   |
| Database Link:        | <a href="#">NP_996766</a><br><a href="#">Entrez Gene 80979 Mouse</a> <a href="#">Entrez Gene 83819 Rat</a> <a href="#">Entrez Gene 375611 Human</a><br><a href="#">P58743</a>   |
| Background:           | This gene encodes a member of the SLC26A/SulP transporter family. The protein functions as a molecular motor in motile outer hair cells (OHCs) of the cochlea, inducing changes in cell length that act to amplify sound levels. The transmembrane protein is an incomplete anion transporter, and does not allow anions to cross the cell membrane but instead undergoes a conformational change in response to changes in intracellular Cl <sup>-</sup> levels that results in a change in cell length. |
| Synonyms:             | DFNB61; PRES  |
| Protein Families:     | Transmembrane   |



[View online »](#)

**Product images:**

Immunohistochemistry of paraffin-embedded Human prostate cancer tissue using [TA351691] (SLC26A5 Antibody) at dilution 1/20 (Original magnification:  $\times 200$ )



Immunohistochemistry of paraffin-embedded Human prostate cancer tissue using [TA351691] (SLC26A5 Antibody) at dilution 1/20, treated with synthetic peptide. (Original magnification:  $\times 200$ )