

Product datasheet for **TA351690**

SLC26A5 Rabbit Polyclonal Antibody

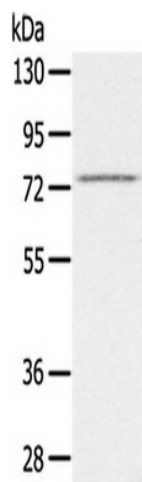
Product data:

Product Type:	Primary Antibodies
Applications:	WB
Recommended Dilution:	ELISA: 1000-2000, WB: 200-1000
Reactivity:	Human, Mouse, Rat
Host:	Rabbit
Isotype:	IgG
Clonality:	Polyclonal
Immunogen:	Synthetic peptide of human SLC26A5
Formulation:	pH7.4 PBS, 0.05% NaN ₃ , 40% Glycerol
Concentration:	lot specific
Purification:	Antigen affinity purification
Conjugation:	Unconjugated
Storage:	Store at -20°C as received.
Stability:	Stable for 12 months from date of receipt.
Predicted Protein Size:	81 kDa
Gene Name:	solute carrier family 26 member 5
Database Link:	NP_996766 Entrez Gene 80979 MouseEntrez Gene 83819 RatEntrez Gene 375611 Human P58743
Background:	This gene encodes a member of the SLC26A/SulP transporter family. The protein functions as a molecular motor in motile outer hair cells (OHCs) of the cochlea, inducing changes in cell length that act to amplify sound levels. The transmembrane protein is an incomplete anion transporter, and does not allow anions to cross the cell membrane but instead undergoes a conformational change in response to changes in intracellular Cl ⁻ levels that results in a change in cell length.
Synonyms:	DFNB61; PRES
Protein Families:	Transmembrane



[View online »](#)

Product images:



Gel: 6%SDS-PAGE, Lysate: 40 ug, Primary antibody: (SLC26A5 Antibody) at dilution 1/200 dilution, Secondary antibody: Goat anti rabbit IgG at 1/8000 dilution, Exposure time: 3 minutes