

## Product datasheet for **TA351689**

### SLC25A4 Rabbit Polyclonal Antibody

#### Product data:

Product Type:	Primary Antibodies
Applications:	IHC
Recommended Dilution:	ELISA: 1000-2000, IHC: 25-100
Reactivity:	Human
Host:	Rabbit
Isotype:	IgG
Clonality:	Polyclonal
Immunogen:	Synthetic peptide of human SLC25A4
Formulation:	pH7.4 PBS, 0.05% NaN <sub>3</sub> , 40% Glycerol
Concentration:	lot specific
Purification:	Antigen affinity purification
Conjugation:	Unconjugated
Storage:	Store at -20°C as received.
Stability:	Stable for 12 months from date of receipt.
Gene Name:	solute carrier family 25 member 4
Database Link:	<a href="#">NP_001142</a> <a href="#">Entrez Gene 291 Human</a> <a href="#">P12235</a>

**Background:** Mutations in this gene are associated with Pendred syndrome, the most common form of syndromic deafness, an autosomal-recessive disease. It is highly homologous to the SLC26A3 gene; they have similar genomic structures and this gene is located 3' of the SLC26A3 gene. The encoded protein has homology to sulfate transporters.

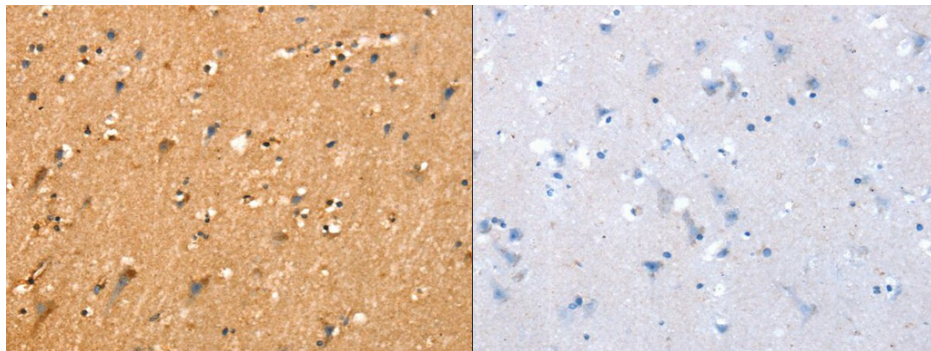
**Synonyms:** 1; AAC1; ANT; ANT 1; ANT1; MTDPS12; PEO2; PEO3; T1

**Protein Families:** Druggable Genome, Transmembrane

**Protein Pathways:** Calcium signaling pathway, Huntington's disease, Parkinson's disease



[View online »](#)

**Product images:**

The image on the left is immunohistochemistry of paraffin-embedded Human brain tissue using (SLC25A4 Antibody) at dilution 1/25, on the right is treated with synthetic peptide. (Original magnification:  $\times 200$ )