

Product datasheet for TA351685

SLC25A20 Rabbit Polyclonal Antibody

Product data:

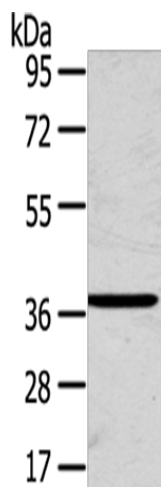
Product Type:	Primary Antibodies
Applications:	IHC, WB
Recommended Dilution:	WB: 200-1000 WB positive control: Human thigh malignant fibrous histiocytoma tissue IHC: 25-100 Positive control: Human prostate cancer Predicted cell location: Cytoplasm
Reactivity:	Human, Mouse, Rat
Host:	Rabbit
Isotype:	IgG
Clonality:	Polyclonal
Immunogen:	Synthetic peptide of human SLC25A20
Formulation:	pH7.4 PBS, 0.05% NaN ₃ , 40% Glycerol
Concentration:	lot specific
Purification:	Antigen affinity purification
Conjugation:	Unconjugated
Storage:	Store at -20°C as received.
Stability:	Stable for 12 months from date of receipt.
Predicted Protein Size:	33 kDa
Gene Name:	solute carrier family 25 member 20
Database Link:	NP_000378 Entrez Gene 57279 Mouse Entrez Gene 117035 Rat Entrez Gene 788 Human O43772
Background:	This gene product is one of several closely related mitochondrial-membrane carrier proteins that shuttle substrates between cytosol and the intramitochondrial matrix space. This protein mediates the transport of acylcarnitines into mitochondrial matrix for their oxidation by the mitochondrial fatty acid-oxidation pathway.
Synonyms:	CAC; CACT



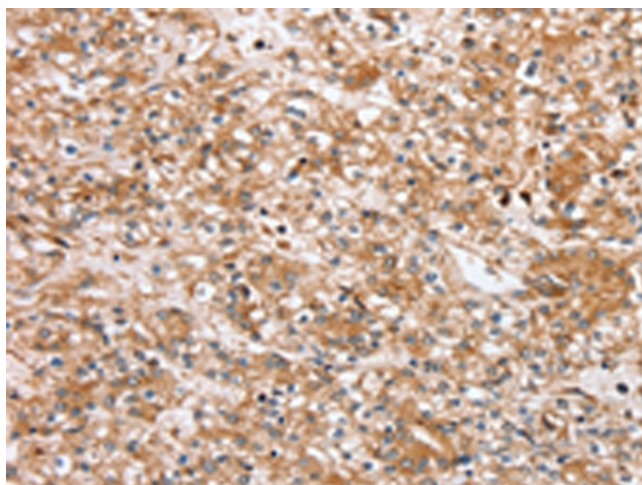
[View online »](#)

Protein Families: Druggable Genome, Transmembrane

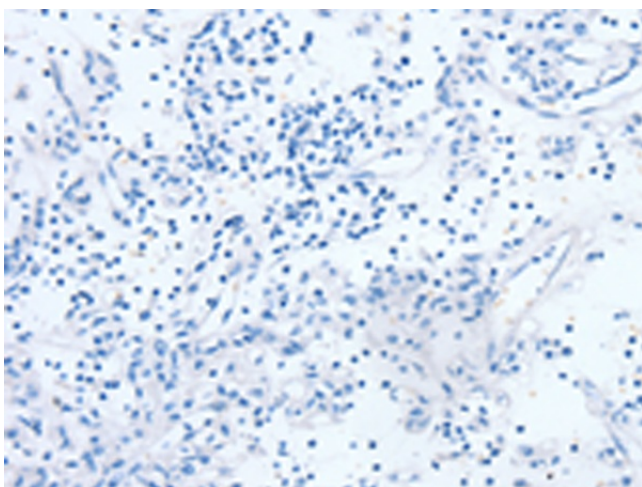
Product images:



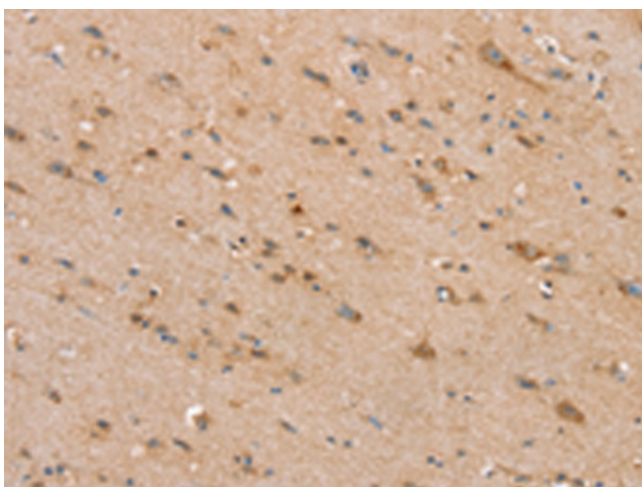
Gel: 8%SDS-PAGE
Lysate: 40 μ g
Lane: Human thigh malignant fibrous histiocytoma tissue
Primary antibody: TA351685 (SLC25A20 Antibody) at dilution 1/200
Secondary antibody: Goat anti rabbit IgG at 1/8000 dilution
Exposure time: 1 minute



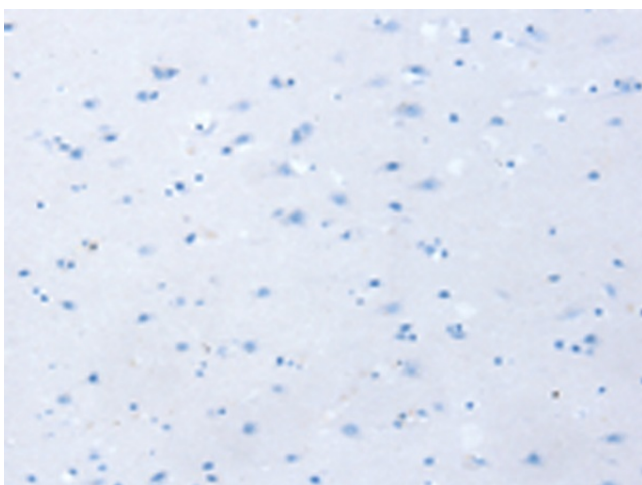
Immunohistochemistry of paraffin-embedded Human prostate cancer tissue using TA351685 (SLC25A20 Antibody) at dilution 1/30 (Original magnification: \times 200)



Immunohistochemistry of paraffin-embedded Human prostate cancer tissue using TA351685 (SLC25A20 Antibody) at dilution 1/30, treated with synthetic peptide. (Original magnification: $\times 200$)



Immunohistochemistry of paraffin-embedded Human brain tissue using TA351685 (SLC25A20 Antibody) at dilution 1/30 (Original magnification: $\times 200$)



Immunohistochemistry of paraffin-embedded Human brain tissue using TA351685 (SLC25A20 Antibody) at dilution 1/30, treated with synthetic peptide. (Original magnification: $\times 200$)