

## Product datasheet for **TA351684**

### SLC24A6 (SLC8B1) Rabbit Polyclonal Antibody

#### Product data:

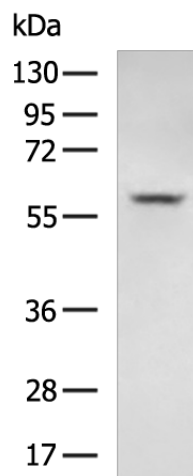
Product Type:	Primary Antibodies
Applications:	IHC, WB
Recommended Dilution:	WB: 200-1000 WB positive control: Mouse placenta tissue lysate IHC: 50-200 Positive control: Human esophagus cancer Predicted cell location: Cytoplasm and Cell membrane
Reactivity:	Human, Mouse, Rat
Host:	Rabbit
Isotype:	IgG
Clonality:	Polyclonal
Immunogen:	Synthetic peptide of human SLC8B1
Formulation:	pH7.4 PBS, 0.05% NaN <sub>3</sub> , 40% Glycerol
Concentration:	lot specific
Purification:	Antigen affinity purification
Conjugation:	Unconjugated
Storage:	Store at -20°C as received.
Stability:	Stable for 12 months from date of receipt.
Predicted Protein Size:	64 kDa
Gene Name:	solute carrier family 8 member B1
Database Link:	<a href="#">NP_079235</a> <a href="#">Entrez Gene 170756 Mouse</a> <a href="#">Entrez Gene 498185 Rat</a> <a href="#">Entrez Gene 80024 Human</a> <a href="#">Q6J4K2</a>
Background:	SLC24A6 belongs to a family of potassium-dependent sodium/calcium exchangers that maintain cellular calcium homeostasis through the electrogenic countertransport of 4 sodium ions for 1 calcium ion and 1 potassium ion.
Synonyms:	NCKX6; NCLX; SLC24A6



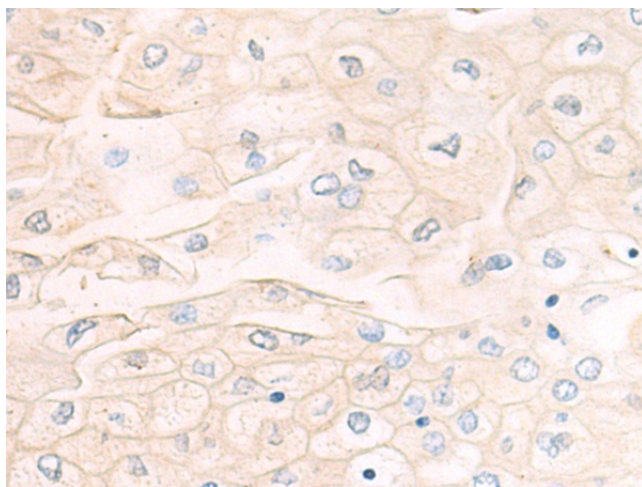
[View online »](#)

Protein Families: Druggable Genome, Transmembrane

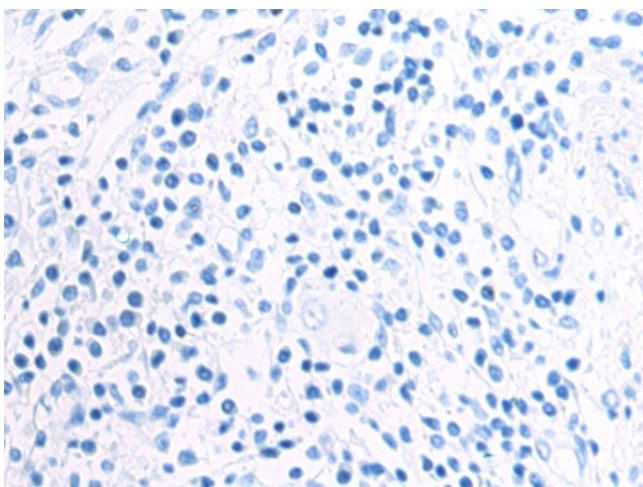
### Product images:



Gel: 8%SDS-PAGE  
Lysate: 40  $\mu$ g  
Lane: Mouse placenta tissue lysate  
Primary antibody: TA351684 (SLC8B1 Antibody) at dilution 1/400  
Secondary antibody: Goat anti rabbit IgG at 1/5000 dilution  
Exposure time: 1 minute



Immunohistochemistry of paraffin-embedded Human esophagus cancer tissue using TA351684 (SLC8B1 Antibody) at dilution 1/50 (Original magnification:  $\times$ 200)



Immunohistochemistry of paraffin-embedded Human esophagus cancer tissue using TA351684 (SLC8B1 Antibody) at dilution 1/50, treated with synthetic peptide. (Original magnification: ×200)