

## Product datasheet for **TA351683**

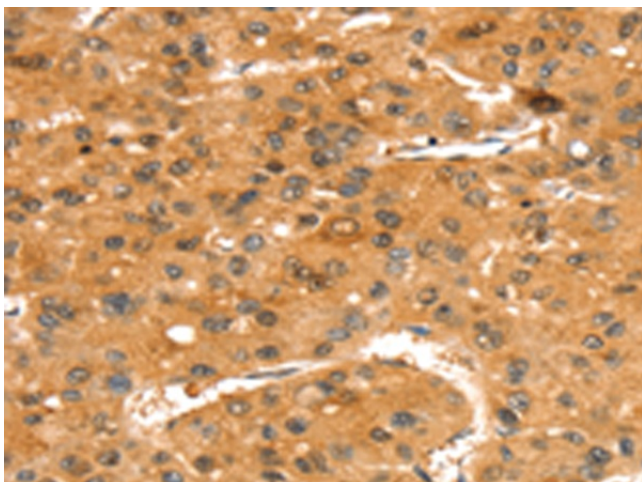
### SLC24A4 Rabbit Polyclonal Antibody

#### Product data:

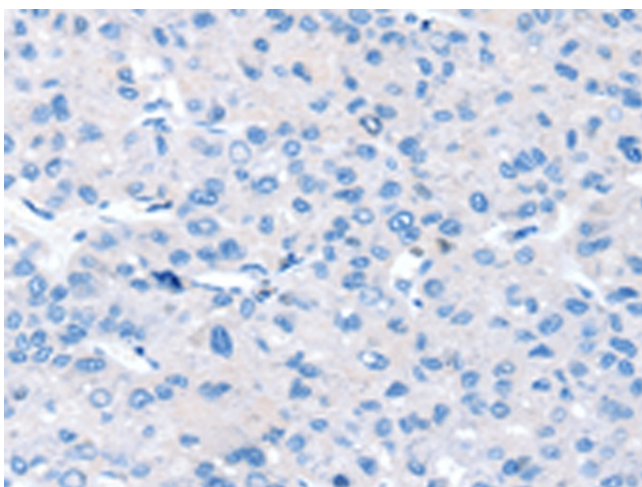
Product Type:	Primary Antibodies
Applications:	IHC
Recommended Dilution:	IHC: 25-100 Positive control: Human liver cancer Predicted cell location: Cytoplasm and Cell membrane
Reactivity:	Human
Host:	Rabbit
Isotype:	IgG
Clonality:	Polyclonal
Immunogen:	Synthetic peptide of human SLC24A4
Formulation:	pH7.4 PBS, 0.05% NaN <sub>3</sub> , 40% Glycerol
Concentration:	lot specific
Purification:	Antigen affinity purification
Conjugation:	Unconjugated
Storage:	Store at -20°C as received.
Stability:	Stable for 12 months from date of receipt.
Gene Name:	solute carrier family 24 member 4
Database Link:	<a href="#">NP_705932</a> <a href="#">Entrez Gene 123041 Human</a> <a href="#">Q8NFF2</a>
Background:	This gene encodes a member of the potassium-dependent sodium/calcium exchanger protein family. Alternative splicing results in multiple transcript variants. Transports 1 Ca <sup>2+</sup> and 1 K <sup>+</sup> in exchange for 4 Na <sup>+</sup> . Controls the rapid response termination and proper regulation of adaptation in olfactory sensory neurons (OSNs) which subsequently influences how odor information is encoded and perceived.
Synonyms:	A12A5; NCKX4; SHEP6; SLC24A2
Protein Families:	Druggable Genome, Transmembrane



[View online »](#)

**Product images:**

Immunohistochemistry of paraffin-embedded Human liver cancer tissue using TA351683 (SLC24A4 Antibody) at dilution 1/35 (Original magnification:  $\times 200$ )



Immunohistochemistry of paraffin-embedded Human liver cancer tissue using TA351683 (SLC24A4 Antibody) at dilution 1/35, treated with synthetic peptide. (Original magnification:  $\times 200$ )