

Product datasheet for **TA351680**

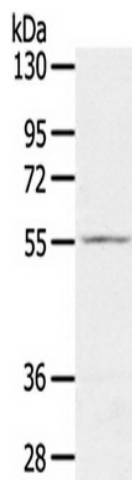
SLC16A11 Rabbit Polyclonal Antibody

Product data:

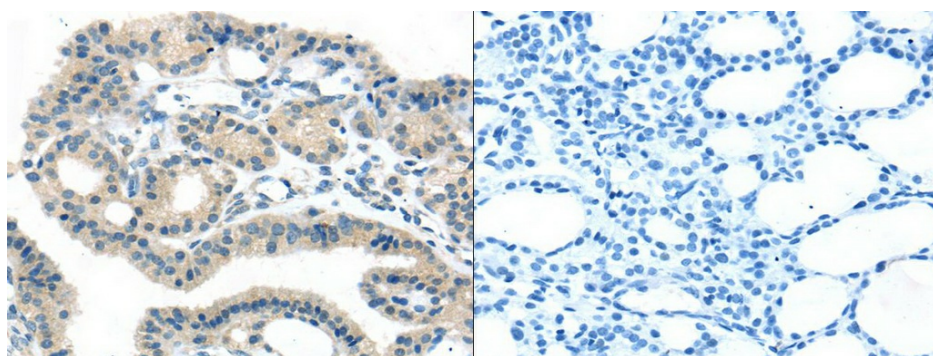
Product Type:	Primary Antibodies
Applications:	IHC, WB
Recommended Dilution:	ELISA: 1000-2000, WB: 200-1000, IHC: 25-100
Reactivity:	Human, Mouse
Host:	Rabbit
Isotype:	IgG
Clonality:	Polyclonal
Immunogen:	Synthetic peptide of human SLC16A11
Formulation:	pH7.4 PBS, 0.05% NaN ₃ , 40% Glycerol
Concentration:	lot specific
Purification:	Antigen affinity purification
Conjugation:	Unconjugated
Storage:	Store at -20°C as received.
Stability:	Stable for 12 months from date of receipt.
Predicted Protein Size:	48 kDa
Gene Name:	solute carrier family 16 member 11
Database Link:	NP_699188 Entrez Gene 162515 Human Q8NCK7
Background:	MCT11 (Monocarboxylate transporter 11), also known as SLC16A11 (Solute carrier family 16 member 11), is a 471 proton-linked monocarboxylate transporter that catalyzes the rapid transport of monocarboxylates across the plasma membrane.
Synonyms:	MCT11
Protein Families:	Transmembrane



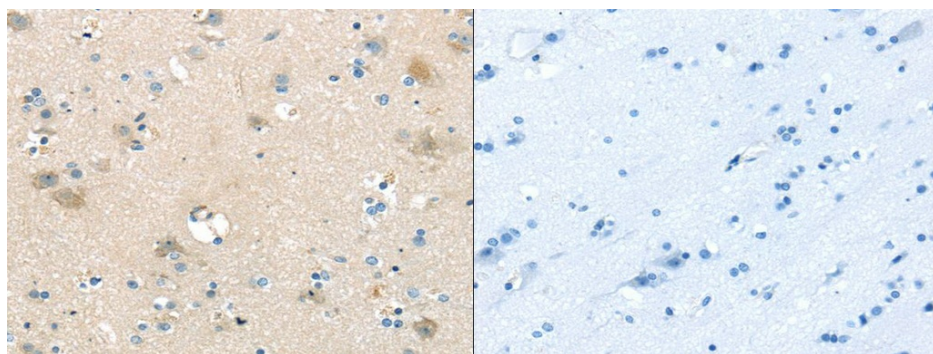
[View online »](#)

Product images:

Gel: 8%SDS-PAGE, Lysate: 40 ug, Primary antibody: (SLC16A11 Antibody) at dilution 1/200 dilution, Secondary antibody: Goat anti rabbit IgG at 1/8000 dilution, Exposure time: 2 minutes



The image on the left is immunohistochemistry of paraffin-embedded Human thyroid cancer tissue using (SLC16A11 Antibody) at dilution 1/25, on the right is treated with synthetic peptide. (Original magnification: $\times 200$)



The image on the left is immunohistochemistry of paraffin-embedded Human brain tissue using (SLC16A11 Antibody) at dilution 1/25, on the right is treated with synthetic peptide. (Original magnification: $\times 200$)