

Product datasheet for **TA351677**

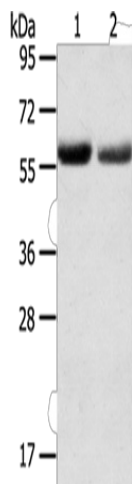
SLC16A9 Rabbit Polyclonal Antibody

Product data:

Product Type:	Primary Antibodies
Applications:	WB
Recommended Dilution:	WB: 500-2000 WB positive control: Human normal stomach and stomach cancer tissue
Reactivity:	Human
Host:	Rabbit
Isotype:	IgG
Clonality:	Polyclonal
Immunogen:	Synthetic peptide of human SLC16A9
Formulation:	pH7.4 PBS, 0.05% NaN ₃ , 40% Glycerol
Concentration:	lot specific
Purification:	Antigen affinity purification
Conjugation:	Unconjugated
Storage:	Store at -20°C as received.
Stability:	Stable for 12 months from date of receipt.
Predicted Protein Size:	56 kDa
Gene Name:	solute carrier family 16 member 9
Database Link:	NP_919274 Entrez Gene 220963 Human Q7RTY1
Background:	MCT9 (monocarboxylate transporter 9), also known as SLC16A9 (solute carrier family 16, member 9 (monocarboxylic acid transporter 9)) or C10orf36, is a 509 amino acid multi-pass membrane protein that belongs to the major facilitator superfamily. Like other MCT proteins, MCT9 functions as a monocarboxylate transporter that catalyzes the rapid proton-linked transport of monocarboxylates across the plasma membrane.
Synonyms:	C10orf36; MCT9
Protein Families:	Transmembrane



[View online »](#)

Product images:

Gel: 8%SDS-PAGE

Lysate: 60 µg

Lane 1-2: Human normal stomach tissue

Human stomach cancer tissue

Primary antibody: TA351677 (SLC16A9 Antibody)
at dilution 1/200

Secondary antibody: Goat anti rabbit IgG at
1/8000 dilution

Exposure time: 5 minutes