

Product datasheet for **TA351674**

SLC14A1 Rabbit Polyclonal Antibody

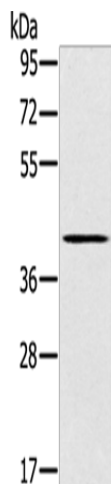
Product data:

Product Type:	Primary Antibodies
Applications:	WB
Recommended Dilution:	WB: 200-1000 WB positive control: Mouse kidney tissue
Reactivity:	Human, Mouse
Host:	Rabbit
Isotype:	IgG
Clonality:	Polyclonal
Immunogen:	Synthetic peptide of human SLC14A1
Formulation:	pH7.4 PBS, 0.05% NaN ₃ , 40% Glycerol
Concentration:	lot specific
Purification:	Antigen affinity purification
Conjugation:	Unconjugated
Storage:	Store at -20°C as received.
Stability:	Stable for 12 months from date of receipt.
Predicted Protein Size:	43 kDa
Gene Name:	solute carrier family 14 member 1 (Kidd blood group)
Database Link:	NP_056949 Entrez Gene 108052 MouseEntrez Gene 6563 Human Q13336
Background:	The protein encoded by this gene is a membrane transporter that mediates urea transport in erythrocytes. This gene forms the basis for the Kidd blood group system. Mediates urea transport in erythrocytes By similarity. Low-affinity facilitative urea transporter that allow rapid equilibration between the urinary space and the hyperosmotic interstitium. the rate of urea conduction is increased by hypoosmotic stress.
Synonyms:	HsT1341; HUT11; JK; RACH1; RACH2; UT-B1; UT1; UTE
Protein Families:	Transmembrane



[View online »](#)

Product images:



Gel: 8%SDS-PAGE
Lysate: 40 μ g
Lane: Mouse kidney tissue
Primary antibody: TA351674 (SLC14A1 Antibody)
at dilution 1/200
Secondary antibody: Goat anti rabbit IgG at
1/8000 dilution
Exposure time: 2 minutes