

Product datasheet for **TA351673S**

SIRT4 Rabbit Polyclonal Antibody

Product data:

Product Type:	Primary Antibodies
Applications:	IHC, WB
Recommended Dilution:	WB: 200-1000 WB positive control: Rat kidney tissue IHC: 25-100 Positive control: Human brain Predicted cell location: Cytoplasm
Reactivity:	Human, Mouse
Host:	Rabbit
Isotype:	IgG
Clonality:	Polyclonal
Immunogen:	Synthetic peptide of human SIRT4
Formulation:	pH7.4 PBS, 0.05% NaN ₃ , 40% Glycerol
Purification:	Antigen affinity purification
Conjugation:	Unconjugated
Storage:	Store at -20°C as received.
Stability:	Stable for 12 months from date of receipt.
Predicted Protein Size:	35 kDa
Gene Name:	sirtuin 4
Database Link:	NP_036372 Entrez Gene 75387 Mouse Entrez Gene 23409 Human Q9Y6E7

Background: This gene encodes a member of the sirtuin family of proteins, homologs to the yeast Sir2 protein. Members of the sirtuin family are characterized by a sirtuin core domain and grouped into four classes. The functions of human sirtuins have not yet been determined; however, yeast sirtuin proteins are known to regulate epigenetic gene silencing and suppress recombination of rDNA. Studies suggest that the human sirtuins may function as intracellular regulatory proteins with mono-ADP-ribosyltransferase activity.

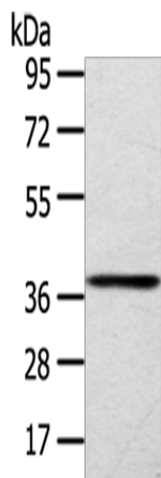


[View online »](#)

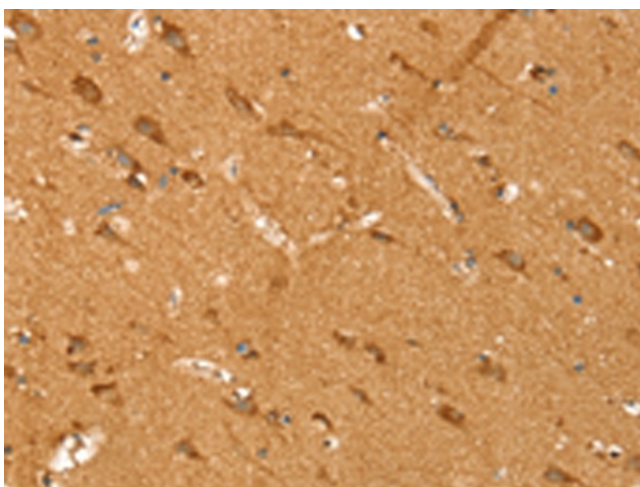
Synonyms: SIR2L4

Protein Families: Druggable Genome, Transcription Factors

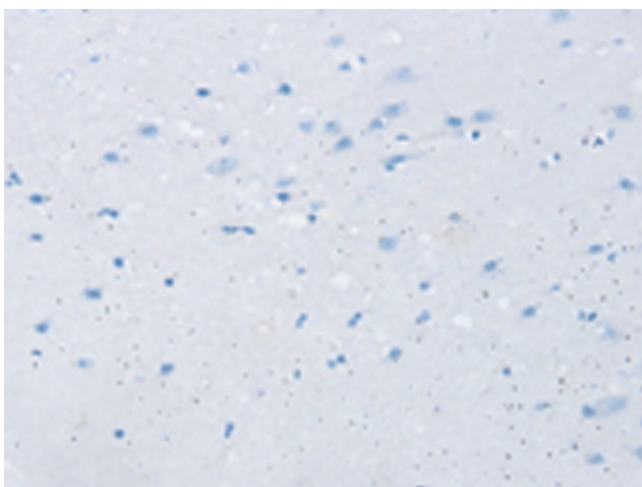
Product images:



Gel: 8%SDS-PAGE
Lysate: 40 μ g
Lane: Rat kidney tissue
Primary antibody: [TA351673] (SIRT4 Antibody) at dilution 1/200
Secondary antibody: Goat anti rabbit IgG at 1/8000 dilution
Exposure time: 3 minutes



Immunohistochemistry of paraffin-embedded Human brain tissue using [TA351673] (SIRT4 Antibody) at dilution 1/35 (Original magnification: \times 200)



Immunohistochemistry of paraffin-embedded Human brain tissue using [TA351673] (SIRT4 Antibody) at dilution 1/35, treated with synthetic peptide. (Original magnification: ×200)