

## Product datasheet for **TA351672**

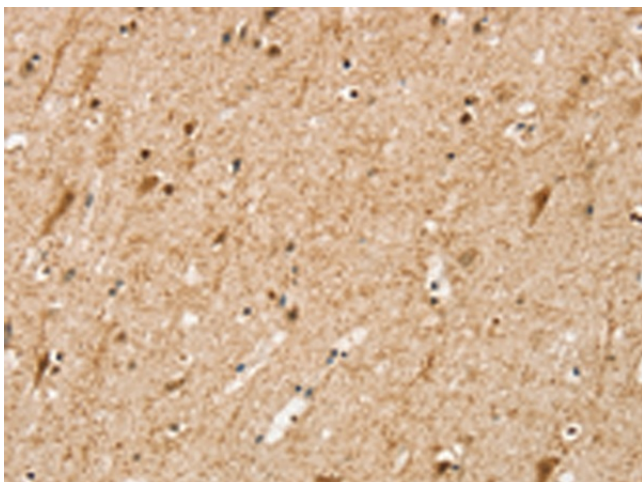
### SRP68 Rabbit Polyclonal Antibody

#### Product data:

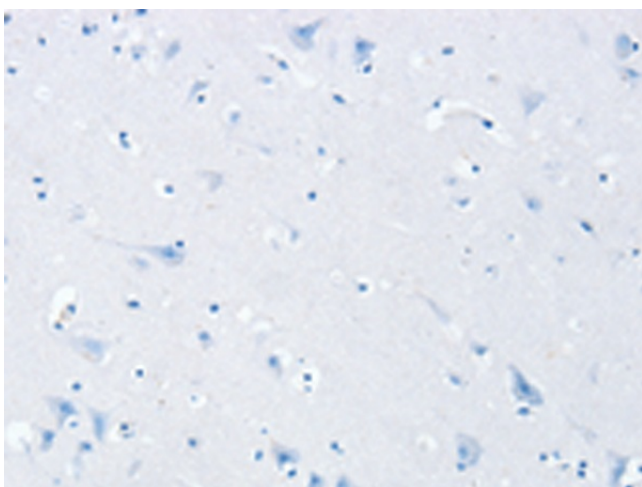
Product Type:	Primary Antibodies
Applications:	IHC
Recommended Dilution:	IHC: 25-100 Positive control: Human brain Predicted cell location: Cytoplasm
Reactivity:	Human, Mouse
Host:	Rabbit
Isotype:	IgG
Clonality:	Polyclonal
Immunogen:	Synthetic peptide of human SRP68
Formulation:	pH7.4 PBS, 0.05% NaN <sub>3</sub> , 40% Glycerol
Concentration:	lot specific
Purification:	Antigen affinity purification
Conjugation:	Unconjugated
Storage:	Store at -20°C as received.
Stability:	Stable for 12 months from date of receipt.
Gene Name:	signal recognition particle 68
Database Link:	<a href="#">NP_055045</a> <a href="#">Entrez Gene 217337 Mouse</a> <a href="#">Entrez Gene 6730 Human</a> <a href="#">Q9UHB9</a>
Background:	This gene encodes a subunit of the signal recognition particle (SRP). The SRP is a ribonucleoprotein complex that transports secreted and membrane proteins to the endoplasmic reticulum for processing. The complex includes a 7S RNA and six protein subunits. The encoded protein is the 68kDa component of the SRP, and forms a heterodimer with the 72kDa subunit that is required for SRP function.
Synonyms:	signal recognition particle 68kDa
Protein Pathways:	Protein export



[View online »](#)

**Product images:**

Immunohistochemistry of paraffin-embedded Human brain tissue using TA351672 (SRP68 Antibody) at dilution 1/25 (Original magnification: ×200)



Immunohistochemistry of paraffin-embedded Human brain tissue using TA351672 (SRP68 Antibody) at dilution 1/25, treated with synthetic peptide. (Original magnification: ×200)