

Product datasheet for **TA351671**

SRP68 Rabbit Polyclonal Antibody

Product data:

Product Type:	Primary Antibodies
Applications:	WB
Recommended Dilution:	WB: 500-2000 WB positive control: 293T, HepG2 and K562 cells
Reactivity:	Human, Mouse
Host:	Rabbit
Isotype:	IgG
Clonality:	Polyclonal
Immunogen:	Synthetic peptide of human SRP68
Formulation:	pH7.4 PBS, 0.05% NaN ₃ , 40% Glycerol
Concentration:	lot specific
Purification:	Antigen affinity purification
Conjugation:	Unconjugated
Storage:	Store at -20°C as received.
Stability:	Stable for 12 months from date of receipt.
Predicted Protein Size:	71 kDa
Gene Name:	signal recognition particle 68
Database Link:	NP_055045 Entrez Gene 217337 Mouse Entrez Gene 6730 Human Q9UHB9

Background: This gene encodes a subunit of the signal recognition particle (SRP). The SRP is a ribonucleoprotein complex that transports secreted and membrane proteins to the endoplasmic reticulum for processing. The complex includes a 7S RNA and six protein subunits. The encoded protein is the 68kDa component of the SRP, and forms a heterodimer with the 72kDa subunit that is required for SRP function.

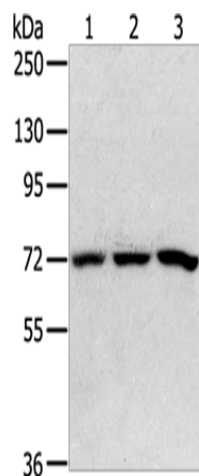
Synonyms: signal recognition particle 68kDa

Protein Pathways: Protein export



[View online »](#)

Product images:



Gel: 6%SDS-PAGE
Lysate: 40 µg
Lane 1-3: 293T cells
HepG2 cells
K562 cells
Primary antibody: TA351671 (SRP68 Antibody) at dilution 1/200
Secondary antibody: Goat anti rabbit IgG at 1/8000 dilution
Exposure time: 5 seconds