

Product datasheet for **TA351669**

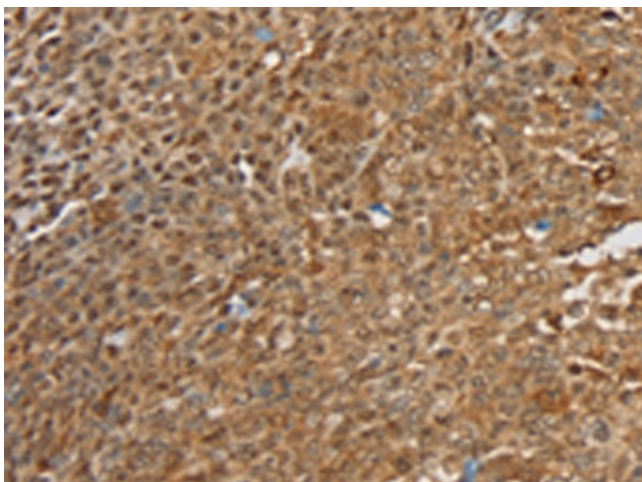
SIGLEC14 Rabbit Polyclonal Antibody

Product data:

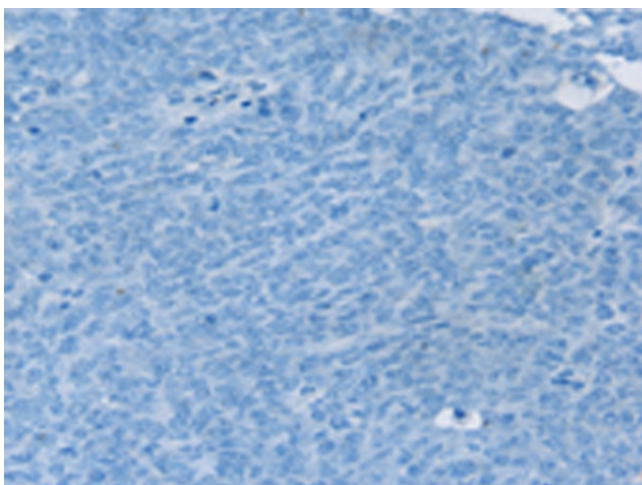
Product Type:	Primary Antibodies
Applications:	IHC
Recommended Dilution:	IHC: 25-100 Positive control: Human ovarian cancer Predicted cell location: Cytoplasm or Cell membrane
Reactivity:	Human
Host:	Rabbit
Isotype:	IgG
Clonality:	Polyclonal
Immunogen:	Synthetic peptide of human SIGLEC14
Formulation:	pH7.4 PBS, 0.05% NaN ₃ , 40% Glycerol
Concentration:	lot specific
Purification:	Antigen affinity purification
Conjugation:	Unconjugated
Storage:	Store at -20°C as received.
Stability:	Stable for 12 months from date of receipt.
Gene Name:	sialic acid binding Ig like lectin 14
Database Link:	NP_001092082 Entrez Gene 100049587 Human Q08ET2
Background:	Putative adhesion molecule. Sialic acid-binding paired receptor which may activate associated receptors. Interacts with TYROBP. Mainly expressed in hematopoietic tissues including bone marrow, spleen and fetal liver. Siglec-14 is predominantly expressed in hematopoietic tissues but is also found in lung and testis.
Synonyms:	SIGLEC14



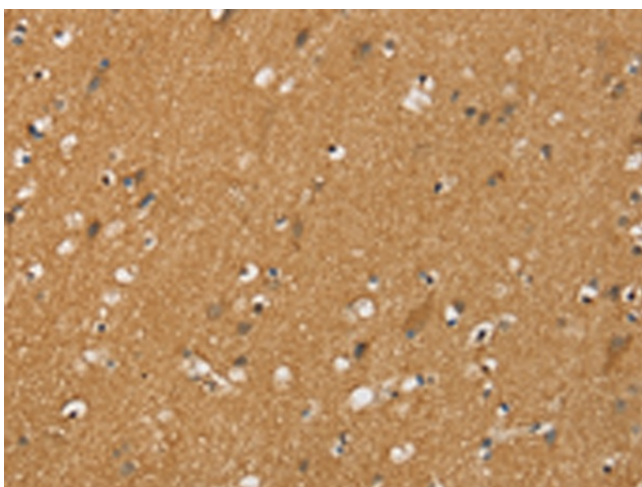
[View online »](#)

Product images:

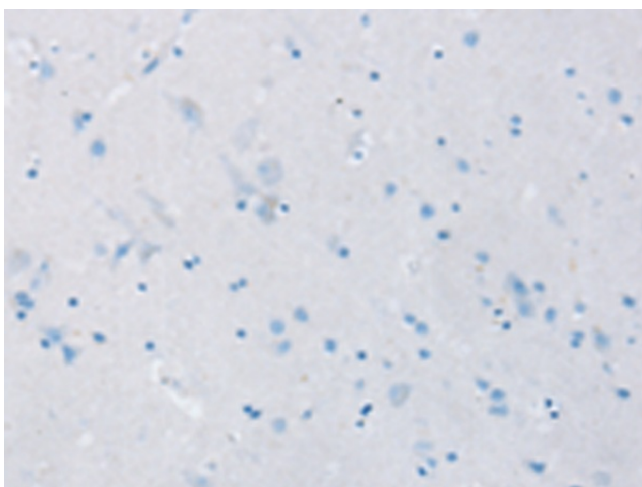
Immunohistochemistry of paraffin-embedded Human ovarian cancer tissue using TA351669 (SIGLEC14 Antibody) at dilution 1/30 (Original magnification: $\times 200$)



Immunohistochemistry of paraffin-embedded Human ovarian cancer tissue using TA351669 (SIGLEC14 Antibody) at dilution 1/30, treated with synthetic peptide. (Original magnification: $\times 200$)



Immunohistochemistry of paraffin-embedded Human brain tissue using TA351669 (SIGLEC14 Antibody) at dilution 1/30 (Original magnification: ×200)



Immunohistochemistry of paraffin-embedded Human brain tissue using TA351669 (SIGLEC14 Antibody) at dilution 1/30, treated with synthetic peptide. (Original magnification: ×200)