

Product datasheet for **TA351666S**

SIGLEC8 Rabbit Polyclonal Antibody

Product data:

Product Type:	Primary Antibodies
Applications:	IHC, WB
Recommended Dilution:	WB: 500-2000 WB positive control: Human liver tissue lysate IHC: 50-200 Positive control: Human prostate cancer Predicted cell location: Cytoplasm
Reactivity:	Human
Host:	Rabbit
Isotype:	IgG
Clonality:	Polyclonal
Immunogen:	Synthetic peptide of human SIGLEC8
Formulation:	pH7.4 PBS, 0.05% NaN ₃ , 40% Glycerol
Purification:	Antigen affinity purification
Conjugation:	Unconjugated
Storage:	Store at -20°C as received.
Stability:	Stable for 12 months from date of receipt.
Predicted Protein Size:	54 kDa
Gene Name:	sialic acid binding Ig like lectin 8
Database Link:	NP_055257 Entrez Gene 27181 Human Q9NYZ4



[View online »](#)

Background:

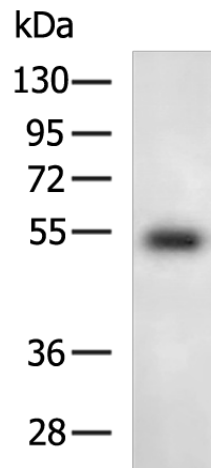
Sialic acid-binding immunoglobulin (Ig)-like lectins, or SIGLECs, are a family of type 1 transmembrane proteins each having a unique expression pattern, mostly in hemopoietic cells. SIGLEC8 is a member of the CD33-like subgroup of SIGLECs, which are localized to 19q13.3-q13.4 and have 2 conserved cytoplasmic tyrosine-based motifs: an immunoreceptor tyrosine-based inhibitory motif, or ITIM, and a motif homologous to one identified in signaling lymphocyte activation molecule that mediates an association with SLAM-associated protein.

Synonyms:

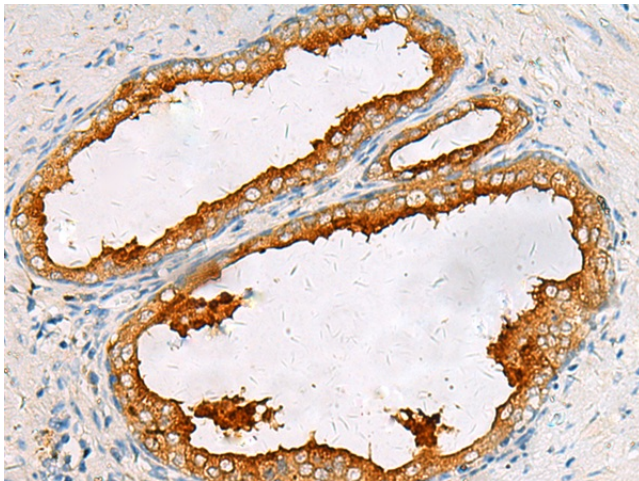
SAF2; SIGLEC-8; SIGLEC8L

Protein Families:

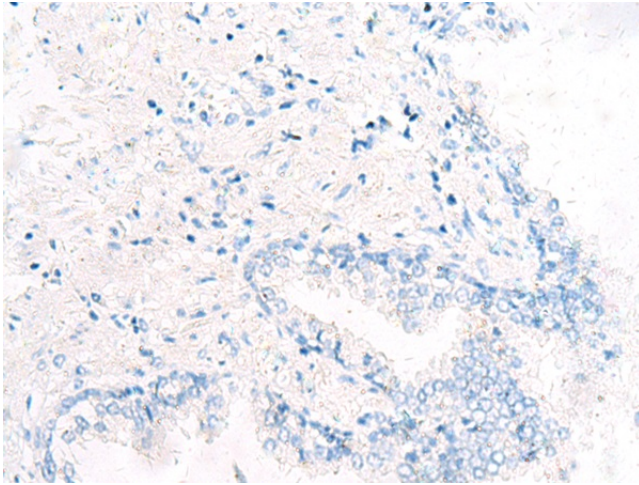
Druggable Genome, Transmembrane

Product images:


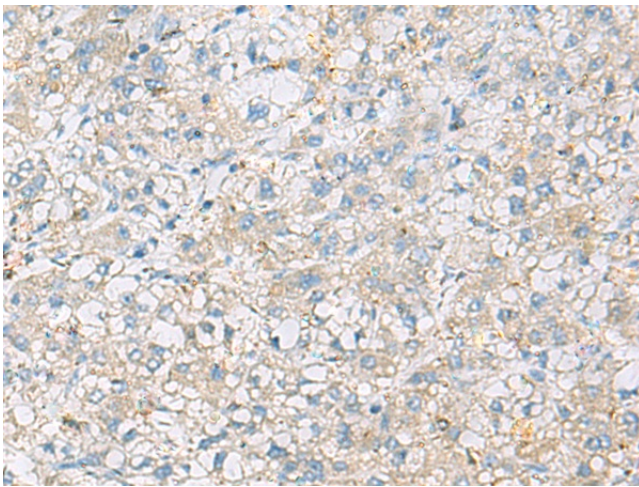
Gel: 8%SDS-PAGE
 Lysate: 40 μ g
 Lane: Human liver tissue lysate
 Primary antibody: [TA351666] (SIGLEC8 Antibody) at dilution 1/500
 Secondary antibody: Goat anti rabbit IgG at 1/5000 dilution
 Exposure time: 2 minutes



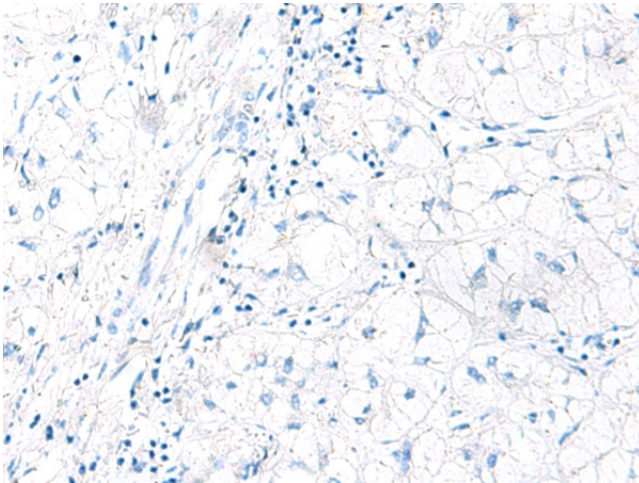
Immunohistochemistry of paraffin-embedded Human prostate cancer tissue using [TA351666] (SIGLEC8 Antibody) at dilution 1/75 (Original magnification: \times 200)



Immunohistochemistry of paraffin-embedded Human prostate cancer tissue using [TA351666] (SIGLEC8 Antibody) at dilution 1/75, treated with synthetic peptide. (Original magnification: ×200)



Immunohistochemistry of paraffin-embedded Human liver cancer tissue using [TA351666] (SIGLEC8 Antibody) at dilution 1/75 (Original magnification: ×200)



Immunohistochemistry of paraffin-embedded Human liver cancer tissue using [TA351666] (SIGLEC8 Antibody) at dilution 1/75, treated with synthetic peptide. (Original magnification: ×200)