

Product datasheet for **TA351663S**

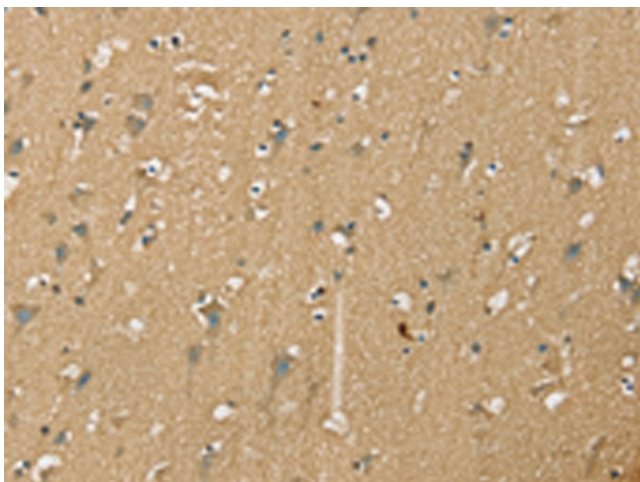
Nestin (NES) Rabbit Polyclonal Antibody

Product data:

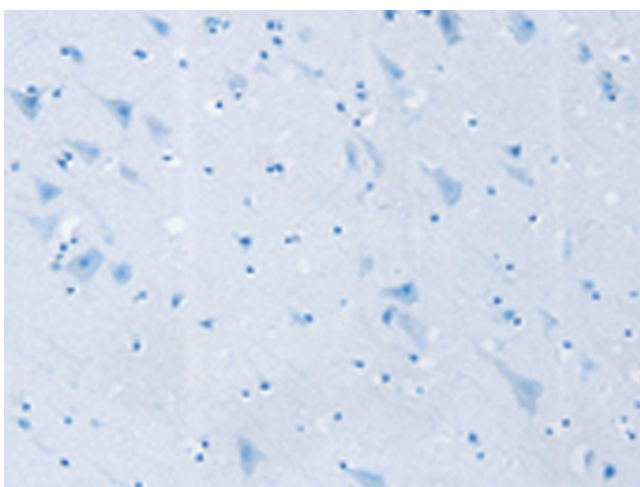
Product Type:	Primary Antibodies
Applications:	IHC
Recommended Dilution:	IHC: 25-100 Positive control: Human brain Predicted cell location: Cytoplasm
Reactivity:	Human
Host:	Rabbit
Isotype:	IgG
Clonality:	Polyclonal
Immunogen:	Synthetic peptide of human NES
Formulation:	pH7.4 PBS, 0.05% NaN ₃ , 40% Glycerol
Purification:	Antigen affinity purification
Conjugation:	Unconjugated
Storage:	Store at -20°C as received.
Stability:	Stable for 12 months from date of receipt.
Gene Name:	nestin
Database Link:	NP_006608 Entrez Gene 10763 Human P48681
Background:	This gene encodes a member of the intermediate filament protein family and is expressed primarily in nerve cells. Required for brain and eye development. Promotes the disassembly of phosphorylated vimentin intermediate filaments (IF) during mitosis and may play a role in the trafficking and distribution of IF proteins and other cellular factors to daughter cells during progenitor cell division.
Synonyms:	Nbla00170
Protein Families:	ES Cell Differentiation/IPS



[View online »](#)

Product images:

Immunohistochemistry of paraffin-embedded Human brain tissue using [TA351663] (NES Antibody) at dilution 1/35 (Original magnification: ×200)



Immunohistochemistry of paraffin-embedded Human brain tissue using [TA351663] (NES Antibody) at dilution 1/35, treated with synthetic peptide. (Original magnification: ×200)