

## Product datasheet for **TA351661S**

### SGPL1 Rabbit Polyclonal Antibody

#### Product data:

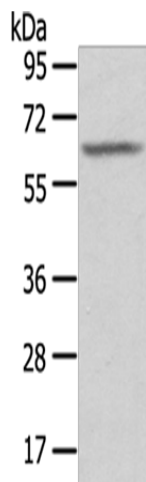
Product Type:	Primary Antibodies
Applications:	IHC, WB
Recommended Dilution:	WB: 200-1000 WB positive control: Human placenta tissue IHC: 25-100 Positive control: Human breast cancer Predicted cell location: Cytoplasm
Reactivity:	Human, Mouse, Rat
Host:	Rabbit
Isotype:	IgG
Clonality:	Polyclonal
Immunogen:	Synthetic peptide of human SGPL1
Formulation:	pH7.4 PBS, 0.05% NaN <sub>3</sub> , 40% Glycerol
Purification:	Antigen affinity purification
Conjugation:	Unconjugated
Storage:	Store at -20°C as received.
Stability:	Stable for 12 months from date of receipt.
Predicted Protein Size:	64 kDa
Gene Name:	sphingosine-1-phosphate lyase 1
Database Link:	<a href="#">NP_003892</a> <a href="#">Entrez Gene 20397 Mouse</a> <a href="#">Entrez Gene 286896 Rat</a> <a href="#">Entrez Gene 8879 Human</a> <a href="#">O95470</a>
Background:	Sphingosine-1-phosphate lyase 1 is an enzyme that in humans is encoded by the SGPL1 gene. Cleaves phosphorylated sphingoid bases (PSBs), such as sphingosine-1-phosphate, into fatty aldehydes and phosphoethanolamine. Elevates stress-induced ceramide production and apoptosis.
Synonyms:	S1PL; SPL
Protein Families:	Druggable Genome



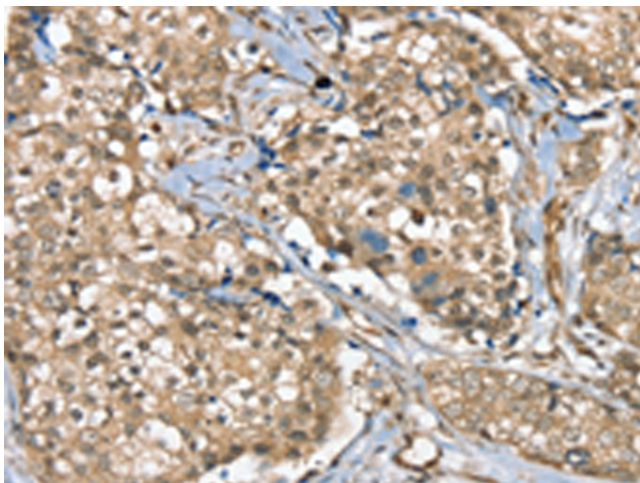
[View online »](#)

Protein Pathways: Metabolic pathways, Sphingolipid metabolism

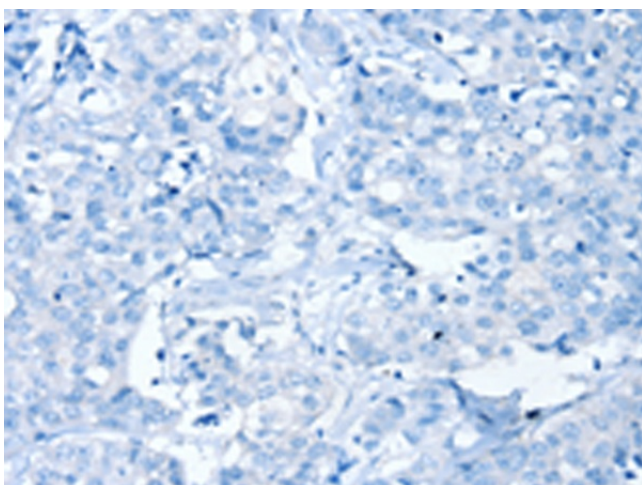
### Product images:



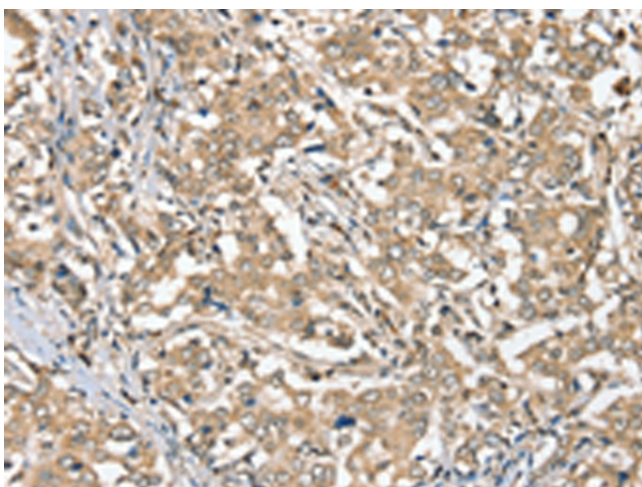
Gel: 8%SDS-PAGE  
Lysate: 40 µg  
Lane: Human placenta tissue  
Primary antibody: [TA351661] (SGPL1 Antibody)  
at dilution 1/200  
Secondary antibody: Goat anti rabbit IgG at  
1/8000 dilution  
Exposure time: 1 second



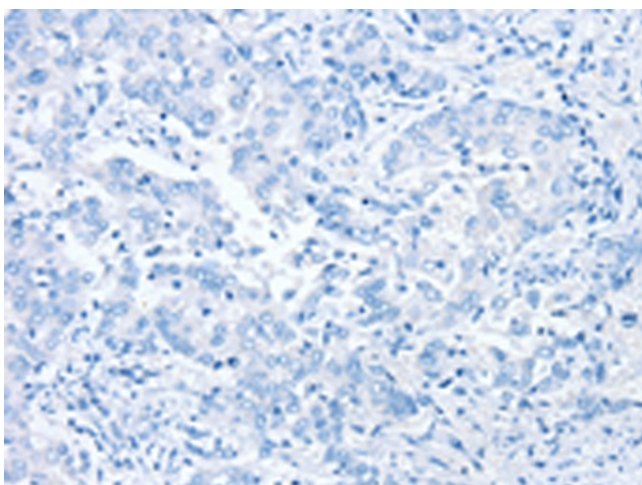
Immunohistochemistry of paraffin-embedded  
Human breast cancer tissue using [TA351661]  
(SGPL1 Antibody) at dilution 1/40 (Original  
magnification: ×200)



Immunohistochemistry of paraffin-embedded Human breast cancer tissue using [TA351661] (SGPL1 Antibody) at dilution 1/40, treated with synthetic peptide. (Original magnification: x200)



Immunohistochemistry of paraffin-embedded Human liver cancer tissue using [TA351661] (SGPL1 Antibody) at dilution 1/40 (Original magnification: x200)



Immunohistochemistry of paraffin-embedded Human liver cancer tissue using [TA351661] (SGPL1 Antibody) at dilution 1/40, treated with synthetic peptide. (Original magnification: x200)