

Product datasheet for **TA351661**

SGPL1 Rabbit Polyclonal Antibody

Product data:

Product Type:	Primary Antibodies
Applications:	IHC, WB
Recommended Dilution:	WB: 200-1000 WB positive control: Human placenta tissue IHC: 25-100 Positive control: Human breast cancer Predicted cell location: Cytoplasm
Reactivity:	Human, Mouse, Rat
Host:	Rabbit
Isotype:	IgG
Clonality:	Polyclonal
Immunogen:	Synthetic peptide of human SGPL1
Formulation:	pH7.4 PBS, 0.05% NaN ₃ , 40% Glycerol
Concentration:	lot specific
Purification:	Antigen affinity purification
Conjugation:	Unconjugated
Storage:	Store at -20°C as received.
Stability:	Stable for 12 months from date of receipt.
Predicted Protein Size:	64 kDa
Gene Name:	sphingosine-1-phosphate lyase 1
Database Link:	NP_003892 Entrez Gene 20397 Mouse Entrez Gene 286896 Rat Entrez Gene 8879 Human O95470
Background:	Sphingosine-1-phosphate lyase 1 is an enzyme that in humans is encoded by the SGPL1 gene. Cleaves phosphorylated sphingoid bases (PSBs), such as sphingosine-1-phosphate, into fatty aldehydes and phosphoethanolamine. Elevates stress-induced ceramide production and apoptosis.
Synonyms:	S1PL; SPL

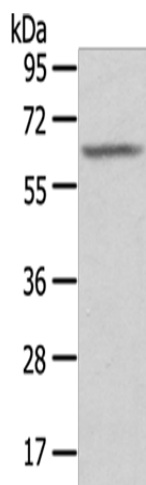


[View online »](#)

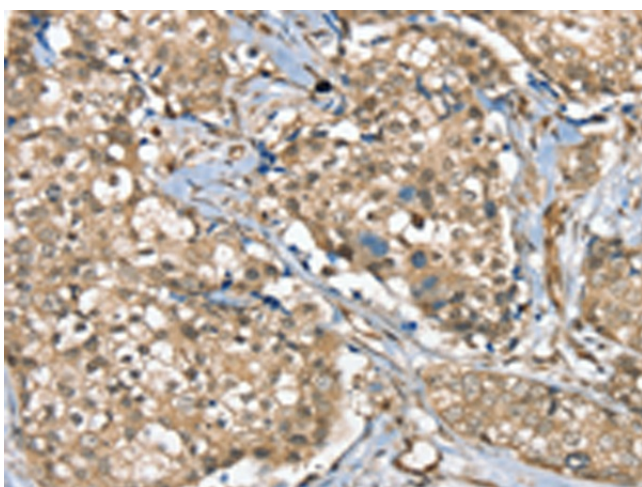
Protein Families: Druggable Genome

Protein Pathways: Metabolic pathways, Sphingolipid metabolism

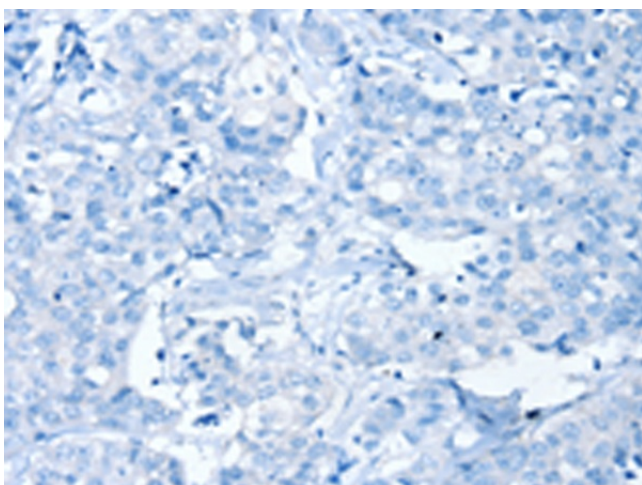
Product images:



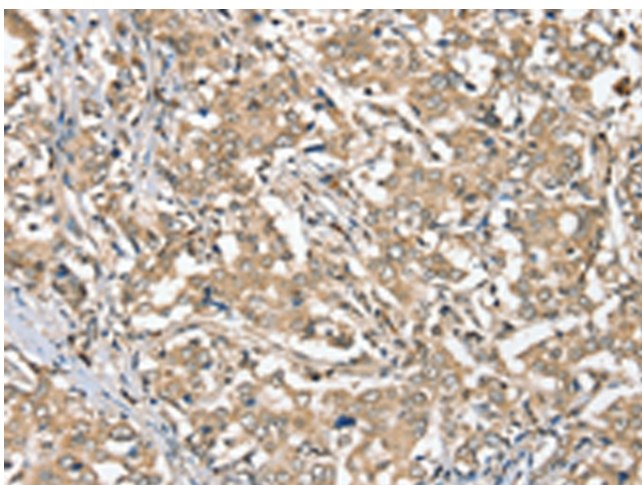
Gel: 8%SDS-PAGE
Lysate: 40 μ g
Lane: Human placenta tissue
Primary antibody: TA351661 (SGPL1 Antibody) at dilution 1/200
Secondary antibody: Goat anti rabbit IgG at 1/8000 dilution
Exposure time: 1 second



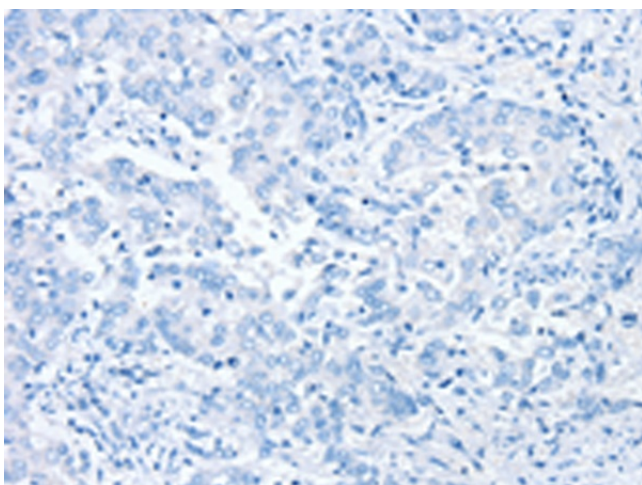
Immunohistochemistry of paraffin-embedded Human breast cancer tissue using TA351661 (SGPL1 Antibody) at dilution 1/40 (Original magnification: \times 200)



Immunohistochemistry of paraffin-embedded Human breast cancer tissue using TA351661 (SGPL1 Antibody) at dilution 1/40, treated with synthetic peptide. (Original magnification: ×200)



Immunohistochemistry of paraffin-embedded Human liver cancer tissue using TA351661 (SGPL1 Antibody) at dilution 1/40 (Original magnification: ×200)



Immunohistochemistry of paraffin-embedded Human liver cancer tissue using TA351661 (SGPL1 Antibody) at dilution 1/40, treated with synthetic peptide. (Original magnification: ×200)