

Product datasheet for **TA351660S**

SEZ6L Rabbit Polyclonal Antibody

Product data:

Product Type:	Primary Antibodies
Applications:	IHC
Recommended Dilution:	IHC: 25-100 Positive control: Human breast cancer Predicted cell location: Cytoplasm
Reactivity:	Human, Mouse
Host:	Rabbit
Isotype:	IgG
Clonality:	Polyclonal
Immunogen:	Synthetic peptide of human SEZ6L
Formulation:	pH7.4 PBS, 0.05% NaN ₃ , 40% Glycerol
Purification:	Antigen affinity purification
Conjugation:	Unconjugated
Storage:	Store at -20°C as received.
Stability:	Stable for 12 months from date of receipt.
Gene Name:	seizure related 6 homolog like
Database Link:	NP_066938 Entrez Gene 23544 Human Q9BYH1

Background: SEZ6L (seizure related 6 homolog-like) is a 1,024 amino acid single-pass type I membrane protein that localizes to the endoplasmic reticulum. Widely expressed, SEZ6L is a candidate tumor suppressor gene and may contribute to specialized endoplasmic reticulum functions in neurons. SEZ6L contains three CUB domains and five sushi (CCP/SCR) domains, which may be involved in protein-protein interactions and signal transduction. The gene encoding SEZ6L is located on human chromosome 22, which houses over 500 genes and is the second smallest human chromosome. Mutations in several of the genes that map to chromosome 22 are involved in the development of Phelan-McDermid syndrome, Neurofibromatosis type 2, autism and schizophrenia.

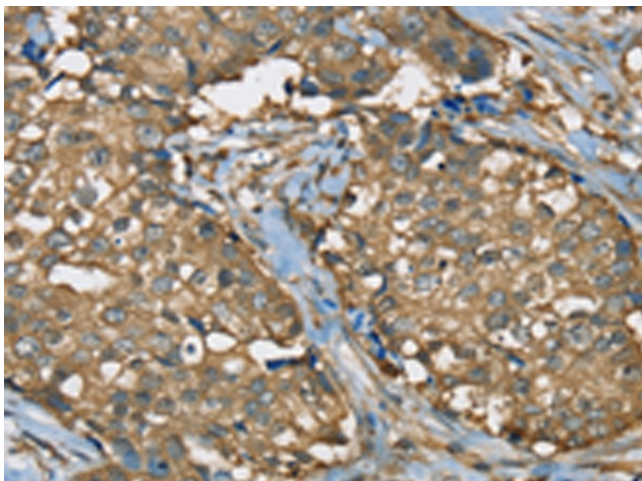


[View online »](#)

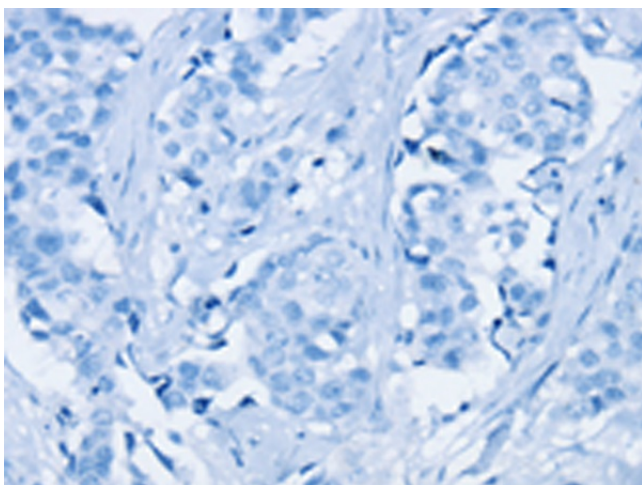
Synonyms: Acig1; acupuncture induced gene 1; AI843918; AIG1; AW539724; BSRP-B; mKIAA0927; seizure related 6 homolog like

Protein Families: Druggable Genome, Transmembrane

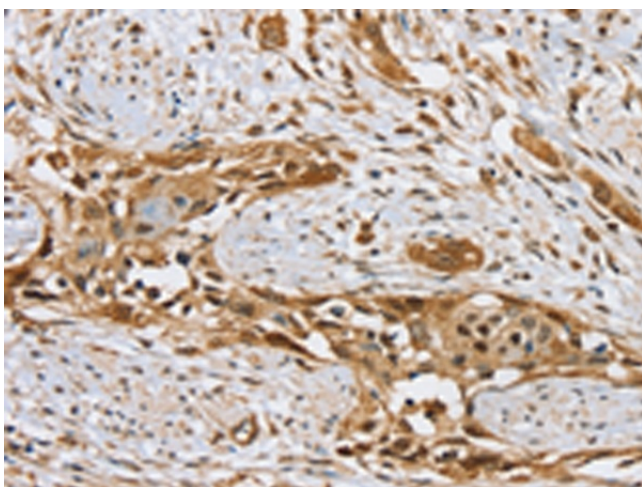
Product images:



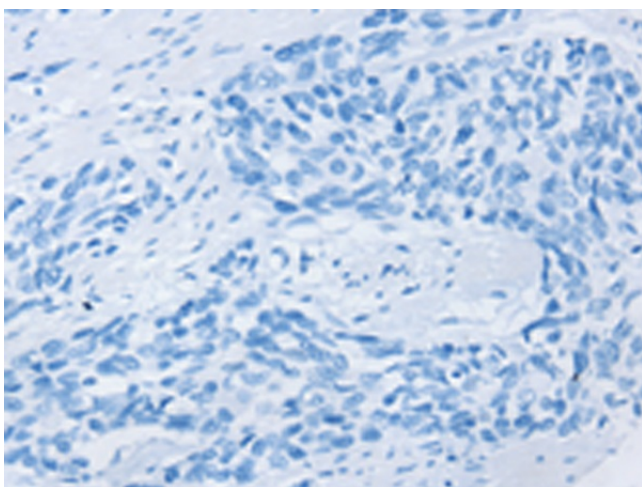
Immunohistochemistry of paraffin-embedded Human breast cancer tissue using [TA351660] (SEZ6L Antibody) at dilution 1/35 (Original magnification: $\times 200$)



Immunohistochemistry of paraffin-embedded Human breast cancer tissue using [TA351660] (SEZ6L Antibody) at dilution 1/35, treated with synthetic peptide. (Original magnification: $\times 200$)



Immunohistochemistry of paraffin-embedded Human esophagus cancer tissue using [TA351660] (SEZ6L Antibody) at dilution 1/35 (Original magnification: $\times 200$)



Immunohistochemistry of paraffin-embedded Human esophagus cancer tissue using [TA351660] (SEZ6L Antibody) at dilution 1/35, treated with synthetic peptide. (Original magnification: $\times 200$)