

## Product datasheet for **TA351660**

### SEZ6L Rabbit Polyclonal Antibody

#### Product data:

|                       |  |
|-----------------------|--|
| Product Type:         | Primary Antibodies   |
| Applications:         | IHC  |
| Recommended Dilution: | IHC: 25-100<br>Positive control: Human breast cancer<br>Predicted cell location: Cytoplasm     |
| Reactivity:           | Human, Mouse   |
| Host:                 | Rabbit   |
| Isotype:              | IgG  |
| Clonality:            | Polyclonal   |
| Immunogen:            | Synthetic peptide of human SEZ6L   |
| Formulation:          | pH7.4 PBS, 0.05% NaN <sub>3</sub> , 40% Glycerol   |
| Concentration:        | lot specific   |
| Purification:         | Antigen affinity purification  |
| Conjugation:          | Unconjugated   |
| Storage:              | Store at -20°C as received.  |
| Stability:            | Stable for 12 months from date of receipt.   |
| Gene Name:            | seizure related 6 homolog like   |
| Database Link:        | <a href="#">NP_066938</a><br><a href="#">Entrez Gene 23544 Human</a><br><a href="#">Q9BYH1</a> |



[View online »](#)

**Background:**

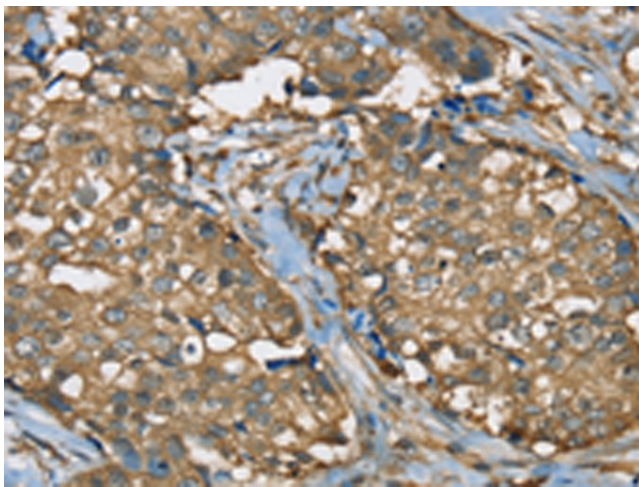
SEZ6L (seizure related 6 homolog-like) is a 1,024 amino acid single-pass type I membrane protein that localizes to the endoplasmic reticulum. Widely expressed, SEZ6L is a candidate tumor suppressor gene and may contribute to specialized endoplasmic reticulum functions in neurons. SEZ6L contains three CUB domains and five sushi (CCP/SCR) domains, which may be involved in protein-protein interactions and signal transduction. The gene encoding SEZ6L is located on human chromosome 22, which houses over 500 genes and is the second smallest human chromosome. Mutations in several of the genes that map to chromosome 22 are involved in the development of Phelan-McDermid syndrome, Neurofibromatosis type 2, autism and schizophrenia.

**Synonyms:**

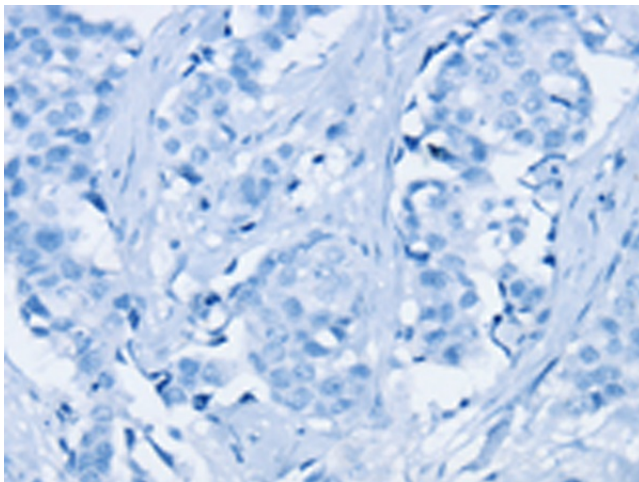
Acig1; acupuncture induced gene 1; AI843918; AIG1; AW539724; BSRP-B; mKIAA0927; seizure related 6 homolog like

**Protein Families:**

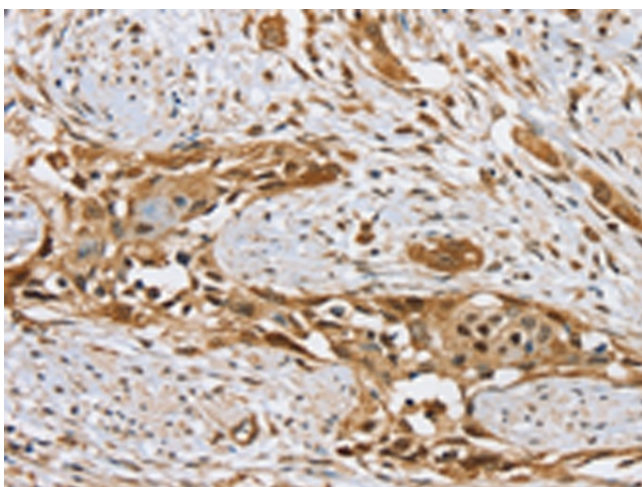
Druggable Genome, Transmembrane

**Product images:**

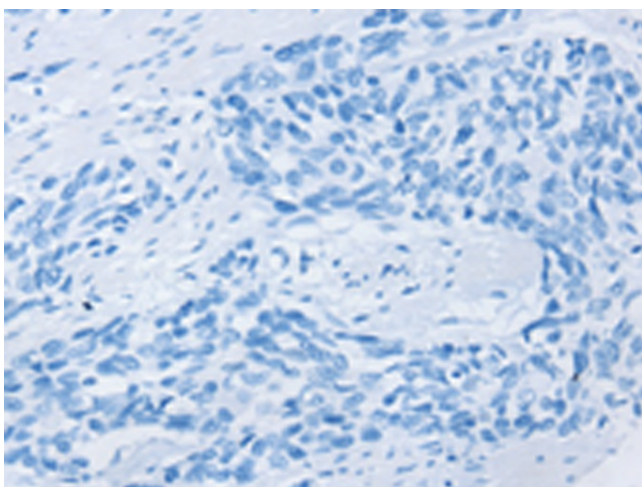
Immunohistochemistry of paraffin-embedded Human breast cancer tissue using TA351660 (SEZ6L Antibody) at dilution 1/35 (Original magnification: x200)



Immunohistochemistry of paraffin-embedded Human breast cancer tissue using TA351660 (SEZ6L Antibody) at dilution 1/35, treated with synthetic peptide. (Original magnification: x200)



Immunohistochemistry of paraffin-embedded Human esophagus cancer tissue using TA351660 (SEZ6L Antibody) at dilution 1/35 (Original magnification:  $\times 200$ )



Immunohistochemistry of paraffin-embedded Human esophagus cancer tissue using TA351660 (SEZ6L Antibody) at dilution 1/35, treated with synthetic peptide. (Original magnification:  $\times 200$ )