

## Product datasheet for **TA351658**

### SESN1 Rabbit Polyclonal Antibody

#### Product data:

Product Type:	Primary Antibodies
Applications:	WB
Recommended Dilution:	WB: 200-1000 WB positive control: Lovo, hela, K562, Raji and hepg2 cells
Reactivity:	Human, Mouse
Host:	Rabbit
Isotype:	IgG
Clonality:	Polyclonal
Immunogen:	Synthetic peptide of human SESN1
Formulation:	pH7.4 PBS, 0.05% NaN <sub>3</sub> , 40% GlycerolIn
Concentration:	lot specific
Purification:	Antigen affinity purification
Conjugation:	Unconjugated
Storage:	Store at -20°C as received.
Stability:	Stable for 12 months from date of receipt.
Predicted Protein Size:	57 kDa
Gene Name:	sestrin 1
Database Link:	<a href="#">NP_055269</a> <a href="#">Entrez Gene 140742 MouseEntrez Gene 27244 Human Q9Y6P5</a>

**Background:** This gene encodes a member of the sestrin family. Sestrins are induced by the p53 tumor suppressor protein and play a role in the cellular response to DNA damage and oxidative stress. The encoded protein mediates p53 inhibition of cell growth by activating AMP-activated protein kinase, which results in the inhibition of the mammalian target of rapamycin protein. The encoded protein also plays a critical role in antioxidant defense by regenerating overoxidized peroxiredoxins, and the expression of this gene is a potential marker for exposure to radiation.

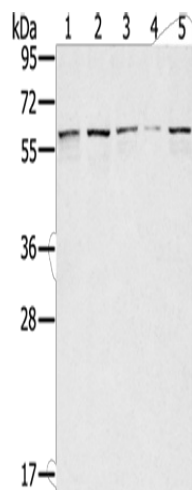
**Synonyms:** PA26; SEST1



[View online »](#)

Protein Pathways: p53 signaling pathway

### Product images:



Gel: 8%SDS-PAGE

Lysate: 40  $\mu$ g

Lane 1-5: Lovo cells

hela cells

K562 cells

Raji cells

hepg2 cells

Primary antibody: TA351658 (SESN1 Antibody) at dilution 1/200

Secondary antibody: Goat anti rabbit IgG at 1/8000 dilution

Exposure time: 40 seconds