

## Product datasheet for **TA351656**

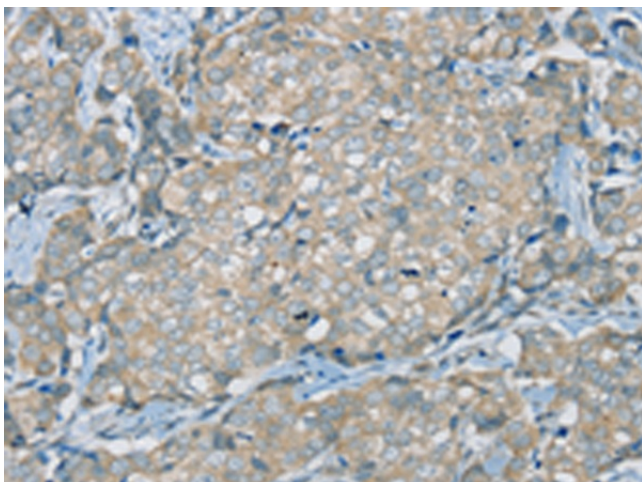
### **SERPINA11 Rabbit Polyclonal Antibody**

#### **Product data:**

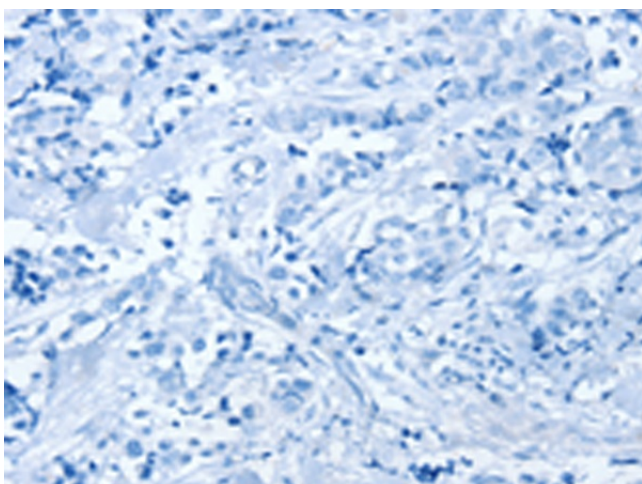
<b>Product Type:</b>	Primary Antibodies
<b>Applications:</b>	IHC
<b>Recommended Dilution:</b>	IHC: 25-100 Positive control: Human breast cancer Predicted cell location: Secreted
<b>Reactivity:</b>	Human, Mouse, Rat
<b>Host:</b>	Rabbit
<b>Isotype:</b>	IgG
<b>Clonality:</b>	Polyclonal
<b>Immunogen:</b>	Synthetic peptide of human SERPINA11
<b>Formulation:</b>	pH7.4 PBS, 0.05% NaN <sub>3</sub> , 40% Glycerol
<b>Concentration:</b>	lot specific
<b>Purification:</b>	Antigen affinity purification
<b>Conjugation:</b>	Unconjugated
<b>Storage:</b>	Store at -20°C as received.
<b>Stability:</b>	Stable for 12 months from date of receipt.
<b>Gene Name:</b>	serpin family A member 11
<b>Database Link:</b>	<a href="#">NP_001073920</a> <a href="#">Entrez Gene 362774 Rat</a> <a href="#">Entrez Gene 380780 Mouse</a> <a href="#">Entrez Gene 256394 Human</a> <a href="#">Q86U17</a>
<b>Background:</b>	The protein belongs to the serpin family. SERPINA11 has serine-type endopeptidase inhibitor activity, negative regulation of endopeptidase activity, regulation of proteolysis, serine-type endopeptidase inhibitor activity.
<b>Synonyms:</b>	antiproteinase-like 2; antitrypsin); clade A (alpha-1 antiproteinase; member 11; serine (or cysteine) proteinase inhibitor; serpin peptidase inhibitor
<b>Protein Families:</b>	Druggable Genome, Secreted Protein



[View online »](#)

**Product images:**

Immunohistochemistry of paraffin-embedded Human breast cancer tissue using TA351656 (SERPINA11 Antibody) at dilution 1/35 (Original magnification:  $\times 200$ )



Immunohistochemistry of paraffin-embedded Human breast cancer tissue using TA351656 (SERPINA11 Antibody) at dilution 1/35, treated with synthetic peptide. (Original magnification:  $\times 200$ )