

Product datasheet for **TA351655S**

SERINC4 Rabbit Polyclonal Antibody

Product data:

Product Type: Primary Antibodies
Applications: WB
Recommended Dilution: WB: 500-2000
WB positive control: Human breast infiltrative duct tissue

Reactivity: Human

Host: Rabbit

Isotype: IgG

Clonality: Polyclonal

Immunogen: Synthetic peptide of human SERINC4

Formulation: pH7.4 PBS, 0.05% NaN₃, 40% Glycerol

Purification: Antigen affinity purification

Conjugation: Unconjugated

Storage: Store at -20°C as received.

Stability: Stable for 12 months from date of receipt.

Predicted Protein Size: 57 kDa

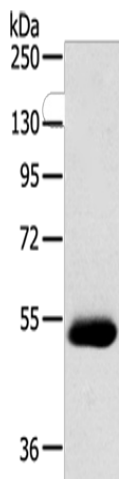
Database Link: [NP_001028689](#)
[Entrez Gene 619189 Human](#)

Background: SERINC4 (serine incorporator 4) is a 518 amino acid multi-pass membrane protein that belongs to the TDE1 family. The SERINC4 protein incorporates a polar amino acid serine into membranes and facilitates the synthesis of two serine-derived lipids, phosphatidylserine and sphingolipids. Because SERINC proteins contain 11 transmembrane segments resembling amino acid transporters, SERINC4 may also function as an L-serine transporter by carrying serine molecules into the hydrophobic milieu of membrane lipid bilayers.

Synonyms: FLJ40363

Protein Families: Transmembrane

[View online »](#)

Product images:

Gel: 8%SDS-PAGE
Lysate: 40 µg
Lane: Human breast infiltrative duct tissue
Primary antibody: [TA351655] (SERINC4 Antibody)
at dilution 1/200
Secondary antibody: Goat anti rabbit IgG at
1/8000 dilution
Exposure time: 5 minutes