

## Product datasheet for **TA351654**

### SERINC3 Rabbit Polyclonal Antibody

#### Product data:

Product Type:	Primary Antibodies
Applications:	IHC, WB
Recommended Dilution:	WB: 200-1000 WB positive control: Human right and left lung cancer tissue IHC: 10-50 Positive control: Human brain Predicted cell location: Cytoplasm or Cell membrane
Reactivity:	Human, Mouse
Host:	Rabbit
Isotype:	IgG
Clonality:	Polyclonal
Immunogen:	Synthetic peptide of human SERINC3
Formulation:	pH7.4 PBS, 0.05% NaN <sub>3</sub> , 40% Glycerol
Concentration:	lot specific
Purification:	Antigen affinity purification
Conjugation:	Unconjugated
Storage:	Store at -20°C as received.
Stability:	Stable for 12 months from date of receipt.
Predicted Protein Size:	53 kDa
Gene Name:	serine incorporator 3
Database Link:	<a href="#">NP_006802</a> <a href="#">Entrez Gene 26943 Mouse</a> <a href="#">Entrez Gene 10955 Human</a> <a href="#">Q13530</a>



[View online »](#)

**Background:**

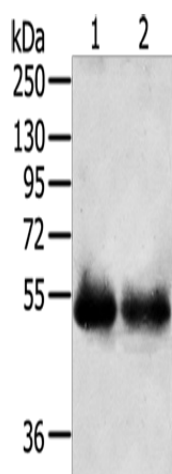
TDE1, tumor differentially expressed protein 1, is a multi-pass membrane protein also known as serine incorporator 3. Also found on the membranes of the Golgi apparatus within cells, TDE1 is highly expressed in neuronal populations but is also found in thymus, kidney, liver and testis. Expression levels of TDE1 in tumors can be as much as tenfold the amount found in normal tissue of the same type. This increased expression implicates TDE1 as being involved in the cellular transformation from normal to malignant tissue. It is believed TDE1 contributes to oncogenesis by partially protecting cells from serum starvation and etoposide-induced apoptosis.

**Synonyms:**

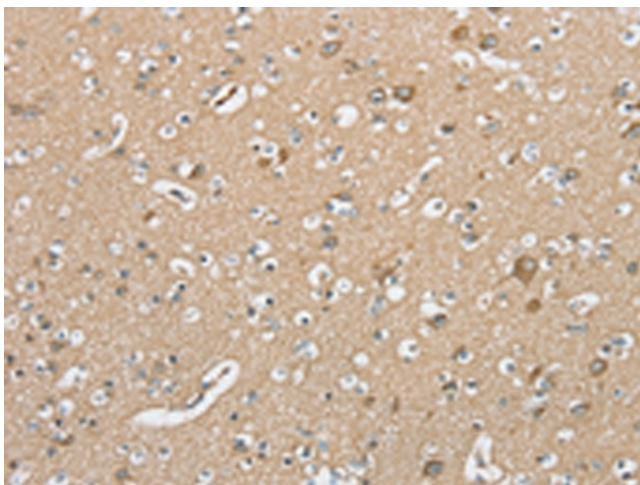
AIGP1; DIFF33; SBBI99; TDE; TDE1; TMS-1

**Protein Families:**

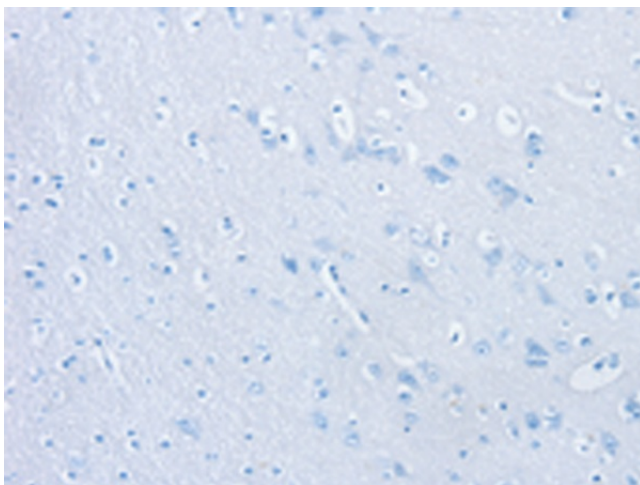
Transmembrane

**Product images:**

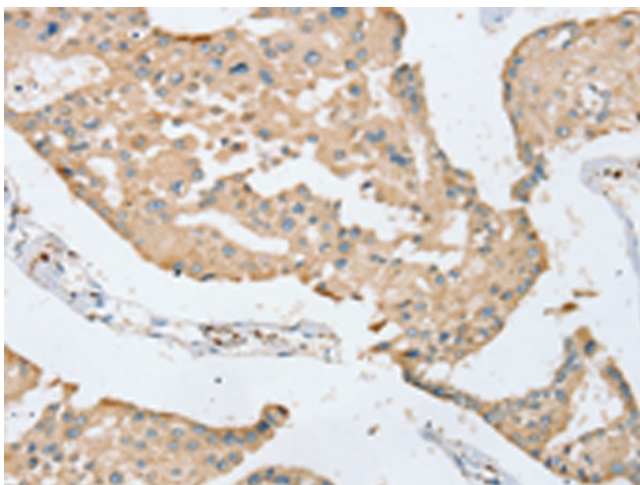
Gel: 8%SDS-PAGE  
Lysate: 40 µg  
Lane 1-2: Human right lung cancer tissue  
Human left lung cancer tissue  
Primary antibody: TA351654 (SERINC3 Antibody)  
at dilution 1/200  
Secondary antibody: Goat anti rabbit IgG at  
1/8000 dilution  
Exposure time: 5 minutes



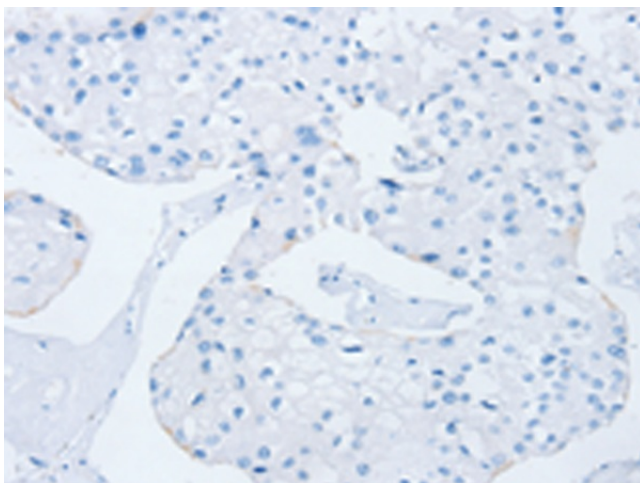
Immunohistochemistry of paraffin-embedded  
Human brain tissue using TA351654 (SERINC3  
Antibody) at dilution 1/20 (Original magnification:  
×200)



Immunohistochemistry of paraffin-embedded Human brain tissue using TA351654 (SERINC3 Antibody) at dilution 1/20, treated with synthetic peptide. (Original magnification:  $\times 200$ )



Immunohistochemistry of paraffin-embedded Human prostate cancer tissue using TA351654 (SERINC3 Antibody) at dilution 1/20 (Original magnification:  $\times 200$ )



Immunohistochemistry of paraffin-embedded Human prostate cancer tissue using TA351654 (SERINC3 Antibody) at dilution 1/20, treated with synthetic peptide. (Original magnification:  $\times 200$ )